



2008+ TOYOTA LAND CRUISER 200 SERIES

PART # 87505-E SHOWN

BUILT FOR TRAVEL

**UCA & ACCESSORY
SALES GUIDE**

STOCK LENGTH UPPER CONTROL ARMS

2008+ TOYOTA LAND CRUISER 200 SERIES - LC200



PART # 87504



Travel	Lift	Track Increase
1" additional	2-3"	0"



INSTALLATION INSTRUCTIONS



ADDITIONAL PRODUCT INFO & IMAGES

Bolt On

Optional Heim Pivot Upgrade - Part # 87504-H

- Heim upper control arms are fully adjustable to allow maximum tuning of caster and camber.
- TC includes 3/4" chromoly heim joints for the pivots.

Kit Includes

UPPER A-ARMS W/ BUSHINGS
PLATED END WASHERS
1" UNIBALLS W/ RETAINING CLIPS
GRADE 8 HARDWARE
GREASE FITTINGS
TAPERED SPINDLE ADAPTERS

Features and Benefits

- UCA's are designed with added caster to aid in retaining factory alignment specs when aftermarket lift kits are installed. This reduces the darting or wandering in the vehicle's steering when 2.5"-3" lift kits are installed.
- Upper control arms combined with extended length coil over shocks will allow for up to 1" of additional wheel travel.
- Urethane bushings reduce bushing deflection compared to stock rubber bushings.
- 4130 chromoly tubular upper control arms are 100% bolt on and hand crafted in the U.S.A.
- CNC machined tapered spindle adapters convert the factory ball joint to a 1" uniball for added component strength & maximum wheel travel.
- TOTAL CHAOS includes 1" I.D. uniballs that feature a heat treated stainless steel ball & heat treated stainless steel race for maximum corrosion resistance and component longevity. These uniballs also feature a military grade PTFE woven fabric liner that helps prevent noise.
- Custom profile upper and lower hi-misalignment spacers maximize droop wheel travel and are machined from heat treated 17-4 stainless steel.
- Control arm pivots include zerk fittings to grease the urethane bushings & inner sleeves without disassembly.
- 3 stage powder coat process includes a durable clear coat to provide a long lasting finish.
- Complete Grade 8 hardware kit is included.



Recommended Tire & Wheel Combination

Tire	Wheel	Backspace
285/70/R17	17 x 8.5	4.75"

Recommended Primary Shock Setup 2.5" Diameter Extended Travel Coilover Shocks

Shock Manufacturer	Part #
Fox Shocks	883-06-113
King Shocks	25001-266A-EXT



TOYOTA LC200 STOCK LENGTH ACCESSORIES

ACCESSORIES SPECIFIC TO PART #87504

FRONT



KING 2.5" EXTENDED TRAVEL COILOVERS W/ COMPRESSION KNOBS



- Adjustable ride height ranging from 2"-3" of lift.
- 1" extra droop wheel travel when combined with 87504 upper control arms.
- Compression adjuster knobs allow user to fine tune ride for optimum performance.
- All necessary mounting brackets and hardware are included along with detailed instructions.

Part # KNG-25001-266A-EXT



KING 3.0" EXTENDED TRAVEL COILOVERS W/ COMPRESSION KNOBS



- Adjustable ride height ranging from 2"-3" of lift.
- 1" extra droop wheel travel when combined with 87504 upper control arms.
- Compression adjuster knobs allow user to fine tune ride for optimum performance.
- All necessary mounting brackets and hardware are included along with detailed instructions.

Part # KNG-33001-205A



EXPEDITION SERIES LOWER CONTROL ARMS - SINGLE SHOCK

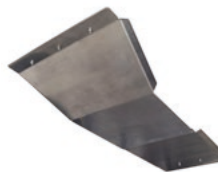


- Newly integrated steering stop tabs retain factory turning angle with no modification necessary to OEM ball joint cradles.
- Includes factory style shock mounts that will accept all aftermarket 2.5" and 3.0" coilover shock options or reinstall the factory shocks.
- New billet CNC machined uniball cup provides more turning clearance & increases strength.
- Urethane bushings reduce bushing deflection compared to stock rubber bushings.
- Stock length replacement lower control arm.

Part # 87505-E



SKID PLATE & BELLY PAN



- Sleek design maximizes ground clearance.
- Protects steering and drive train components.
- 1/4" 5052 Aluminum will not rust.
- Mounts using existing factory bolt locations. No drilling required.
- Mounting hardware and spacers included.

Part # 58890



SPINDLE GUSSET



- Must have reinforcement for anyone who wants to run hard in the dirt!
- Strengthens spindle uprights and prevents the knuckle from damage during hard impacts under braking.
- 1/8" prebent laser cut mild steel brackets.
- Welding and grinding are required to install.

Part # 59699



LOWER CONTROL ARM CAM TAB GUSSETS



- Reinforces weak factory cam alignment tab plates that bend during bottom outs or hard front impacts.
- CNC laser cut 1/8" 4130 chromoly replacement cam plates weld to the frame.
- 1/4" thick lower cam alignment tabs will not bend like factory tabs.
- Welding and grinding are required to install.

Part # 59870



TOYOTA LC200 STOCK LENGTH ACCESSORIES

ACCESSORIES SPECIFIC TO PART #87504

REAR



KING 2.5" REAR SHOCKS W/ COMPRESSION KNOBS



- Compression adjuster knobs allow user to fine tune ride for optimum performance.
- 2.5" diameter shock bodies with remote reservoirs for optimum cooling.
- Application-specific valving for improved ride quality.

Part # KNG-25001-267A



KING 3.0" REAR BYPASS SHOCKS



- Externally adjustable for both compression and rebound.
- 3.0 diameter shock bodies with remote reservoirs for optimum cooling.
- All necessary mounting brackets and hardware are included along with detailed instructions.

Part # KNG-33001-206



KING 3.0 REAR SHOCK RESERVOIR GUARDS



- Aluminum shields are designed to deflect sand and gravel from pitting your King 3.0 rear shock reservoirs.
- 100% bolt on and reuses factory hardware.
- Protects the reservoir from being blasted. Keeps reservoirs looking new.
- Only works with King 3.0 rear shocks. 2.5 shocks reservoirs are mounted in the wheel well.

Part # 58880



CHROMOLY ADJUSTABLE REAR LINKS



- Offers 1.5" more droop travel over stock when longer shocks are installed.
- Upper, lower and pan hard bars are designed to incorporate a heim joint making the entire rear link system length adjustable.
- 100% bolt on.
- Constructed from 4130 chromoly tubing for maximum strength.
- Includes urethane pivot bushings.
- Hi-misalignment spacers are included.

Part # 87450

PREP



1" STAINLESS STEEL FK UNIBALL AND SNAP RING REPLACEMENT KIT



- 1" I.D. uniballs feature a heat treated stainless steel ball & heat treated stainless steel race for maximum corrosion resistance and component longevity.
- Performance parts will require periodic maintenance based on your driving habits & local conditions.
- Uniballs include a military grade PTFE woven fabric liner that helps prevent noise.
- Snap rings included.
- Sold as a pair.

Part # FK-REP KIT



1" UNIBALL REMOVAL / INSTALL TOOL



- Aids in the removal and reinstallation of a 1" uniball from any uniball cup during vehicle prep.
- Designed to be used with any hydraulic press, shop press or hammer.
- Prevents damage to new uniball during reassembly.

Part # 96006



URETHANE BUSHING KIT: UPPER CONTROL ARMS



- Complete TC upper control arm urethane replacement bushing kit.
- Performance parts will require periodic maintenance based on your driving habits & local conditions.
- Inspect bushings and other equipment regularly.
- Contact our facility direct to order these items.

Part # 69000



URETHANE BUSHING KIT: LOWER CONTROL ARMS



- Complete TC lower control arm replacement urethane bushing kit.
- Performance parts will require periodic maintenance based on your driving habits & local conditions.
- Inspect bushings and other equipment regularly.
- Contact our facility direct to order these items.

Part # 69750



1.5" RACE SERIES LONG TRAVEL SYSTEM 2008+ TOYOTA LAND CRUISER 200 SERIES



1.5" LONG TRAVEL TUNDRA CONVERSION

- The upper and lower control arm mounting locations on a Land Cruiser 200 Series allow 1.5" of track width to be added per -side by installing the following stock width 2007+ Tundra upper and lower control arms.
- See pages 6 & 7 for the specific coilovers and rear shocks required to run this setup along with performance accessories.
- The 1.5" conversion requires OEM 2007+ Toyota Tundra 4WD front axles, CV assemblies and outer tie rod ends to be installed. TC also recommends 1.25" rear wheel spacers.



STOCK LENGTH UPPER CONTROL ARM 07+ TUNDRA



Part # 87500

- UCA's are designed with added caster to aid in retaining factory alignment specs when aftermarket lift kits are installed. This reduces the darting or wandering in the vehicle's steering when 2.5"-3" lift kits are installed.
- Urethane bushings reduce bushing deflection compared to stock rubber bushings.
- 4130 chromoly tubular upper control arms are 100% bolt on and hand crafted in the U.S.A.
- CNC machined tapered spindle adapters convert the factory ball joint to a 1" uniball for added component strength & maximum wheel travel.
- Includes 1" I.D. uniballs that feature a heat treated stainless steel ball & heat treated stainless steel race for maximum corrosion resistance and component longevity.



STOCK LENGTH RACE SERIES BOXED LOWER 07+ TUNDRA



Part # 87555-R

- Bolt-on 4130 boxed and internally gusseted lower control arms feature an integrated CNC billet uniball cup.
- Dual shock tabs give the ability to run an optional secondary shock.
- 1" 100% stainless steel uniballs replace factory lower ball joints.
- Built in steering stops do not require any ball joint cradle modification.
- Heim sway bar link upgrades replaces the stock rubber sway bar link for ease of installation and eliminates binding during articulation.
- Stock length replacement lower control arm.
- Urethane bushings reduce bushing deflection compared to stock rubber bushings.
- A 1.25" wheel spacer is required if dual shocks are installed.



LAND CRUISER 200 ACCESSORIES FOR 1.5" KIT

ACCESSORIES SPECIFIC TO 1.5" LONG TRAVEL SYSTEM

FRONT



KING 2.5" EXTENDED TRAVEL COILOVERS W/ COMPRESSION KNOBS



- Adjustable ride height ranging from 2"-3" of lift.
- 1" extra droop wheel travel when combined with 87500 upper control arms.
- Compression adjuster knobs allow user to fine tune ride for optimum performance.
- All necessary mounting brackets and hardware are included along with detailed instructions.

Part # KNG-25001-143A-EXT



KING 2.5" EXTERNAL BYPASS SECONDARY SHOCKS



- Serious levels of performance are achieved when a secondary shock is used with a TC long travel kit.
- Externally adjustable for both compression and rebound.
- 2.5" diameter shock body
- Designed for use with TC secondary shock hoops (PN: 87702).

Part # KNG-TC1143-35



SECONDARY SHOCK HOOP KIT - STOCK WIDTH



- Maximize vehicle dampening control when you install a dual 2.5" shock mount system.
- 4130 prebent chromoly shock hoops are designed to install secondary 2.5" smooth body or bypass shocks for maximum IFS dampening control.
- Reinforces the factory coil bucket and helps reduce flex.
- Upper shock tabs are pre welded in place to aid in secondary shock set up and installation.
- Includes grade 8 hardware.
- Welding and grinding are required to install.

Part # 87702



WELD - ON SPINDLE GUSSETS



- Must have reinforcement for anyone who wants to run hard in the dirt!
- Strengthens spindle uprights and prevents the knuckle from damage during hard impacts under braking.
- 1/8" prebent laser cut mild steel brackets.
- Factory spindles are forged, not cast and gussets can be MIG or TIG welded directly to them.
- Welding and grinding are required to install.

Part # 59699



LOWER CONTROL ARM CAM TAB GUSSETS

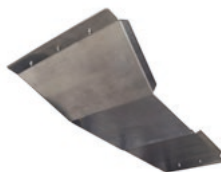


- Reinforces weak factory cam alignment tab plates that bend during bottom outs or hard front impacts.
- CNC laser cut 1/8" 4130 chromoly replacement cam plates weld to the frame.
- 1/4" thick lower cam alignment tabs will not bend like factory tabs.
- Welding and grinding are required for installation.

Part # 59870



SKID PLATE & BELLY PAN



- Sleek design maximizes ground clearance.
- Protects steering and drive train components.
- 1/4" 5052 Aluminum will not rust.
- Mounts using existing factory bolt locations. No drilling required.
- Mounting hardware and spacers included.

Part # 58890



BRAKE LINE EXTENSION KIT



- Widening the track width on a vehicle requires brake line extensions to reach the brake calipers.
- Brake lines are braided stainless steel.
- Kit includes mounting clips and copper washers.
- Brake line extensions are required when running wider lower control arms.

Part # 91331



LAND CRUISER 200 ACCESSORIES FOR 1.5" KIT

ACCESSORIES SPECIFIC TO 1.5" LONG TRAVEL SYSTEM

REAR



KING 2.5 REAR SHOCKS w/ ADJUSTERS



- Compression adjuster knobs allow user to fine tune ride for maximum performance.
- 2.5" diameter shock bodies with remote reservoirs for optimum cooling.
- Application-specific valving for improved ride quality.

Part # KNG-25001-267A



KING 3.0 REAR BYPASS SHOCKS w/ ADJUSTERS



- Externally adjustable for both compression and rebound.
- 3.0 diameter shock bodies with remote reservoirs for optimum cooling.
- All necessary mounting brackets and hardware are included along with detailed instructions.

Part # KNG-33001-206



KING 3.0 REAR SHOCK RESERVOIR GUARDS



- Aluminum shields are designed to deflect sand and gravel from pitting your King 3.0 rear shock reservoirs.
- 100% bolt on and reuses factory hardware.
- Protects the reservoir from being blasted. Keeps reservoirs looking new.
- Only works with King 3.0 rear shocks. 2.5 shocks reservoirs are mounted in the wheel well.

Part # 58880



CHROMOLY ADJUSTABLE REAR LINKS



- Offers 1.5" more droop travel over stock when longer shocks are installed.
- Upper, lower and pan hard bars are designed to incorporate a heim joint making the entire rear link system length adjustable.
- 100% bolt on.
- Constructed from 4130 chromoly tubing for maximum strength.
- Includes urethane pivot bushings.
- Hi-misalignment spacers are included.

Part # 87450



LAND CRUISER 200 ACCESSORIES FOR 1.5" KIT

ACCESSORIES SPECIFIC TO 1.5" LONG TRAVEL SYSTEM

PREP



1" STAINLESS STEEL UNIBALL REPLACEMENT KIT

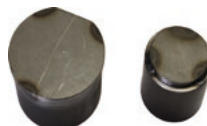


- 1" I.D. uniballs feature a heat treated stainless steel ball & heat treated stainless steel race for maximum corrosion resistance and component longevity. These uniball's also features a military grade PTFE woven fabric liner that helps prevent noise.
- Performance parts will require periodic maintenance based on your driving habits & local conditions.
- Snap rings included.
- Sold as a pair.

Part # FK-REP KIT



UNIBALL REMOVAL & RE-INSTALLATION TOOL



- Aids in the removal and reinstallation of a 1" uniball from any uniball cup during vehicle prep.
- Designed to be used with any hydraulic press, shop press or a hammer.
- Prevents damage to new uniball during reassembly.

Part # 96006



LONG TRAVEL URETHANE BUSHING KIT



- Complete TC long travel suspension system replacement urethane bushing kit.
- Performance parts will require periodic maintenance based on your driving habits & local conditions.
- Inspect bushings and other equipment regularly.

Part # 69701



ADDITIONAL REPLACEMENT PARTS

- TC stocks all replacement parts necessary to maintain your performance equipment.
- Tie-Rod Extensions
- Plated A-Arm End Washers
- D.O.T. Braided Brake Lines
- Limit Straps w/ Adjusters & Mounts
- Grade 8 Hardware
- Hi-Misalignment Spacers
- **Please have your customers contact TC directly for any individual replacement parts.**

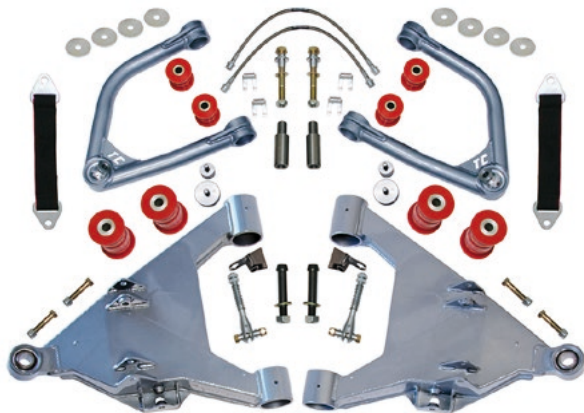


4" RACE SERIES LONG TRAVEL SYSTEM

2008+ TOYOTA LAND CRUISER 200 SERIES



PART # 87000LC-B [FOX/KING/RADFLO]



Travel	Lift	Track Increase
16"	3-4"	5"



INSTALLATION INSTRUCTIONS



ADDITIONAL PRODUCT INFO & IMAGES

Bolt On

Kit Includes

UPPER A-ARMS W/ BUSHINGS & ZERK FITTINGS
 LOWER A-ARMS W/ BUSHINGS
 TIE-ROD EXTENSIONS
 PLATED A-ARM END WASHERS
 D.O.T. BRAIDED BRAKE LINES
 1" UNIBALLS W/ RETAINING CLIPS
 LIMIT STRAPS W/ ADJUSTERS & MOUNTS
 GRADE 8 HARDWARE
 HI-MISALIGNMENT SPACERS

Features and Benefits

- TC boxed lower arms feature sway bar mounting tabs to retain the factory sway bar for better cornering. TC sway bar link #87250 is required to retain the sway bar.
- 2.5" extended upper and lower control arms bolt to factory mounting locations. Fiberglass fenders are required. 16" Travel.
- Boxed and plated lower control arms are designed for dual 2.5" shock capability.
- Upper and lower ball joints are upgraded to 1" stainless steel uniballs for max travel and component strength. These uniballs

also features a military grade PTFE woven fabric liner that helps prevent noise.

- Primary coil over shocks bolt into the factory coil bucket location.
- Several spring rate options allow the ability to customize your ride for your specific application.
- TC custom extended 4340 axles insert into the factory inner and outer CV's to retain 4wd.

Recommended Tire & Wheel Combination

Tire	Wheel	Backspace
35"/12.5/R17	17x8.5	4.75"
37"/12.5/R17	17x8.5	4.75"

Recommended Primary Shock Setup 2.5" Diameter Extended Travel Coilover Shocks

Shock Manufacturer	Part #
Fox Shocks	880-02-949
King Shocks	KNG-TC 5143-03A

Recommended Secondary Shock Setup 2.5" External Bypass Shocks

Shock Manufacturer	Part #
Fox Shocks	982-02-950
King Shocks	KNG-TC 1143-34

Note: TC Hoop Part # 87600 is required

Required Additional Parts for Installation

Part	Part #
Coilover Shocks	See chart above
TC Extended Axles (4WD MODELS)	87300LC

Application Notes

- Suspension travel varies on every vehicle. Welding is required to mount the limit strap mounts and bump stop spacer.
- This kit was not intended to use air bumps.
- Fiberglass fenders are required to run this kit.

SUPPORT - (951) 737 9682

100% MADE IN THE USA

LAND CRUISER 200 ACCESSORIES FOR 4" KIT

ACCESSORIES SPECIFIC TO PART #87000LC-B

FRONT



KING LONG TRAVEL COILOVERS W/ ADJUSTERS



- Long travel specific shocks add 3-4" of lift when paired with a TC long travel kit.
- 2.5" diameter shocks with remote reservoirs for optimum cooling.
- Compression adjuster knobs allow user to fine tune ride for optimum performance.

Part # KNG-TC 5143-03A



KING 2.5 EXTERNAL BYPASS SECONDARY SHOCKS



- Serious levels of performance are achieved when a secondary shock is used with a TC long travel kit.
- Externally adjustable for both compression and rebound.
- Designed for use with TC secondary shock hoops (PN: 87600).

Part # KNG-TC1143-34



KING 3.0 EXTERNAL BYPASS SECONDARY SHOCKS



- Serious levels of performance are achieved when a secondary shock is used with a TC long travel kit.
- Externally adjustable for both compression and rebound.
- 3.0" diameter shock body
- Designed for use with TC secondary shock hoops (PN: 87600).

Part # KNG-TC131-01



DUAL SHOCK HOOPS - LONG TRAVEL ARMS



- Maximize vehicle dampening control when you install a dual 2.5" or 3.0" secondary shock system.
- 4130 prebent chromoly shock hoops are designed to install secondary 2.5" or 3.0" smooth body or bypass shocks for maximum IFS dampening control.
- Reinforces the factory coil bucket and helps reduce flex.
- Upper shock tabs are pre welded in place to aid in secondary shock set up and installation.
- Includes grade 8 hardware.
- Welding and grinding are required to install.

Part # 87600



LOWER CONTROL ARM CAM TAB GUSSETS



- Reinforces weak factory cam alignment tab plates that bend during bottom outs or hard front impacts.
- CNC laser cut 1/8" 4130 chromoly replacement cam plates weld to the frame.
- 1/4" thick lower cam alignment tabs will not bend like factory tabs.
- Welding and grinding are required for installation.

Part # 59870



WELD - ON SPINDLE GUSSETS



- Must have reinforcement for anyone who wants to run hard in the dirt!
- Strengthens spindle uprights and prevents the knuckle from damage during hard impacts under braking.
- 1/8" prebent laser cut mild steel brackets.
- Factory spindles are forged, not cast and gussets can be MIG or TIG welded directly to them.
- Welding and grinding are required to install.

Part # 59699



LONG TRAVEL HEIM SWAY BAR MOUNTING KIT



- Retain the factory sway bar system for a more stable ride.
- Increases cornering stability.
- Heim joints eliminate binding of the factory rubber sway bar link system.
- Includes preset 14mm heim links left & right side with grade 8 hardware.
- No drilling or welding required.
- Fits boxed lowers ONLY.

Part # 87250



LT 4WD 4340 AXLES +4" EXTENDED



- Designed for use with TC +4" long travel systems.
- 4340 heat treated 4" extended axle shafts and clamps are included.
- Re-uses factory Toyota inner and outer CV joints and boots.

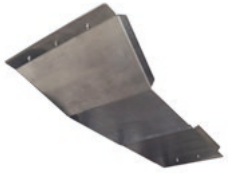
Part # 87300LC

LAND CRUISER 200 ACCESSORIES FOR 4" KIT ACCESSORIES SPECIFIC TO PART #87000LC-B

FRONT



SKID PLATE & BELLY PAN



- Sleek design maximizes ground clearance.
- Protects steering and drive train components.
- 1/4" 5052 Aluminum will not rust.
- Mounts using existing factory bolt locations. No drilling required.
- Mounting hardware and spacers included.

Part # 58890



REAR



KING 2.5 REAR SHOCKS w/ ADJUSTERS



- Compression adjuster knobs allow user to fine tune ride for maximum performance.
- 2.5" diameter shock bodies with remote reservoirs for optimum cooling.
- Application-specific valving for improved ride quality.

Part # KNG-25001-267A



KING 3.0 REAR BYPASS SHOCKS w/ ADJUSTERS



- Externally adjustable for both compression and rebound.
- 3.0 diameter shock bodies with remote reservoirs for optimum cooling.
- All necessary mounting brackets and hardware are included along with detailed instructions.

Part # KNG-33001-206



KING 3.0 REAR SHOCK RESERVOIR GUARDS



- Aluminum shields are designed to deflect sand and gravel from pitting your King 3.0 rear shock reservoirs.
- 100% bolt on and reuses factory hardware.
- Protects the reservoir from being blasted. Keeps reservoirs looking new.
- Only works with King 3.0 rear shocks. 2.5 shocks reservoirs are mounted in the wheel well.

Part # 58880



CHROMOLY ADJUSTABLE REAR LINKS



- Offers 1.5" more droop travel over stock when longer shocks are installed.
- Upper, lower and pan hard bars are designed to incorporate a heim joint making the entire rear link system length adjustable.
- 100% bolt on.
- Constructed from 4130 chromoly tubing for maximum strength.
- Includes urethane pivot bushings.
- Hi-misalignment spacers are included.

Part # 87450

LAND CRUISER 200 ACCESSORIES FOR 4" KIT

ACCESSORIES SPECIFIC TO PART #87000LC-B

PREP



1" STAINLESS STEEL UNIBALL REPLACEMENT KIT



- 1" I.D. uniballs feature a heat treated stainless steel ball & heat treated stainless steel race for maximum corrosion resistance and component longevity. These uniball's also features a military grade PTFE woven fabric liner that helps prevent noise.
- Performance parts will require periodic maintenance based on your driving habits & local conditions.
- Snap rings included.
- Sold as a pair.

Part # FK-REP KIT



LONG TRAVEL URETHANE BUSHING KIT

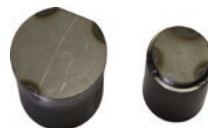


- Complete TC long travel suspension system replacement urethane bushing kit.
- Performance parts will require periodic maintenance based on your driving habits & local conditions.
- Inspect bushings and other equipment regularly.

Part # 69701



UNIBALL REMOVAL & RE-INSTALLATION TOOL



- Aids in the removal and reinstallation of a 1" uniball from any uniball cup during vehicle prep.
- Designed to be used with any hydraulic press, shop press or a hammer.
- Prevents damage to new uniball during reassembly.

Part # 96006



ADDITIONAL REPLACEMENT PARTS

- TC stocks all replacement parts necessary to maintain your performance equipment.
- Tie-Rod Extensions
- Plated A-Arm End Washers
- D.O.T. Braided Brake Lines
- Limit Straps w/ Adjusters & Mounts
- Grade 8 Hardware
- Hi-Misalignment Spacers
- **Please have your customers contact TC directly for any individual replacement parts.**

