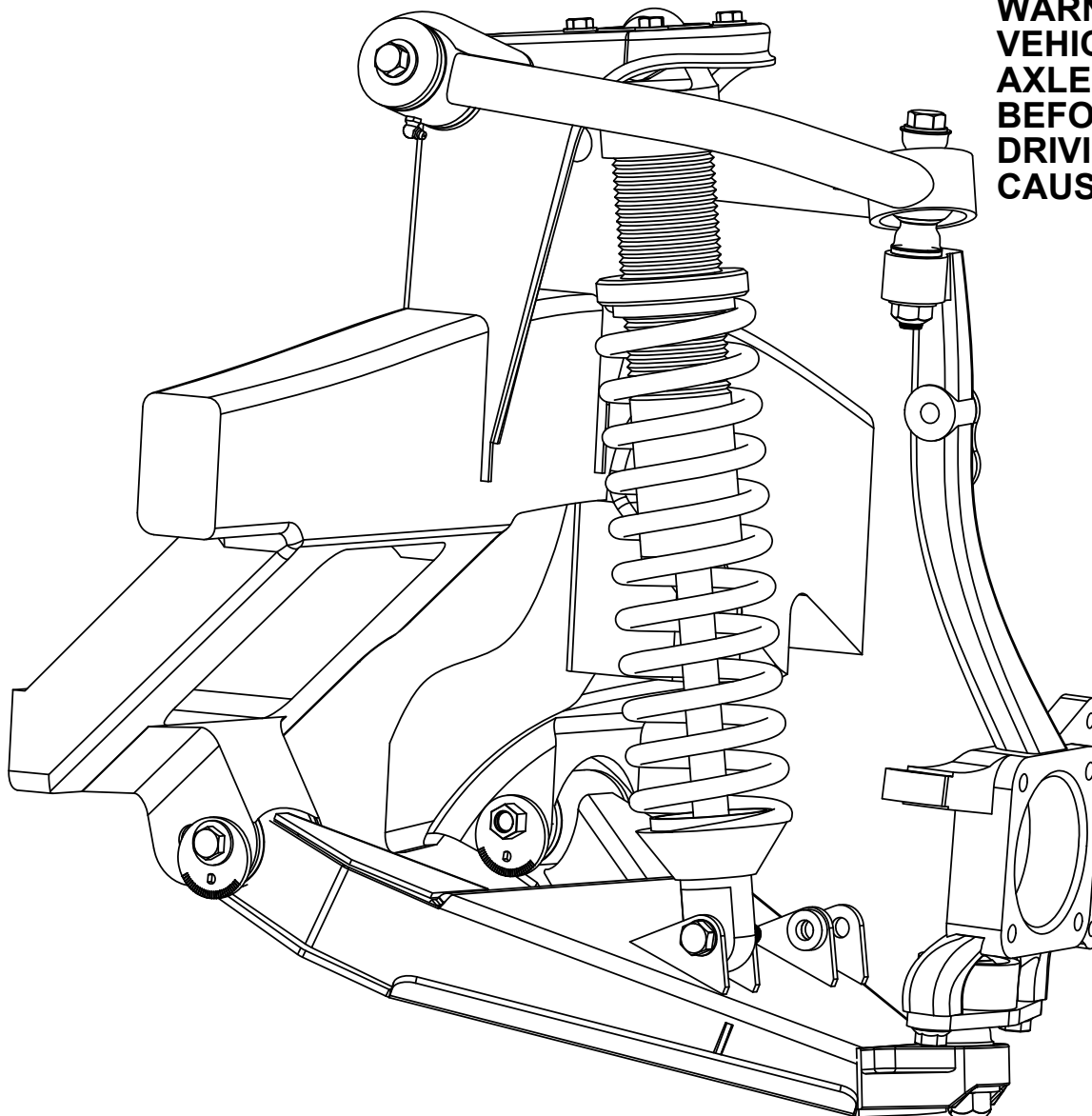


**WARNING: 4WD EQUIPPED  
VEHICLES MUST HAVE EXTENDED  
AXLE SHAFTS INSTALLED  
BEFORE THE VEHICLE IS DRIVEN.  
DRIVING WITHOUT AXLES WILL  
CAUSE CATASTROPHIC FAILURE!**

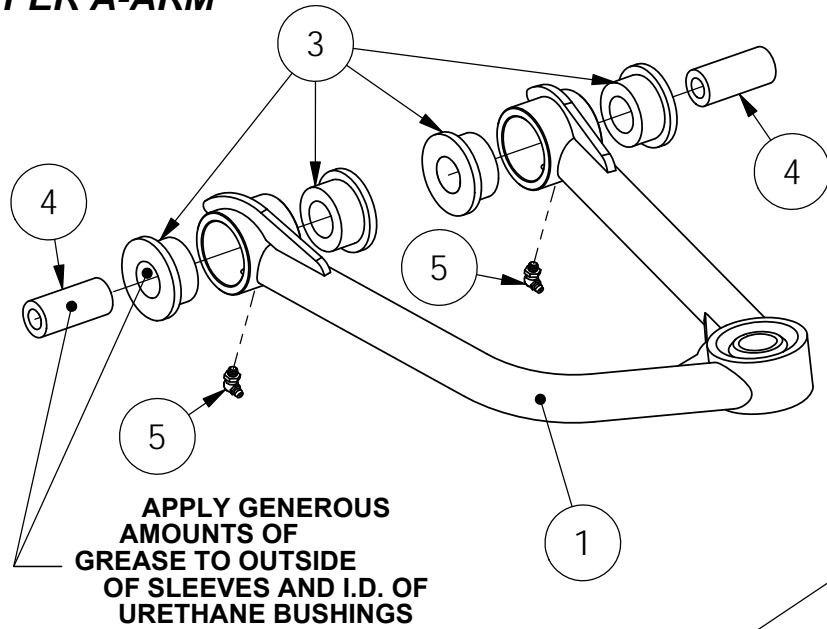


**PROPRIETARY AND CONFIDENTIAL**

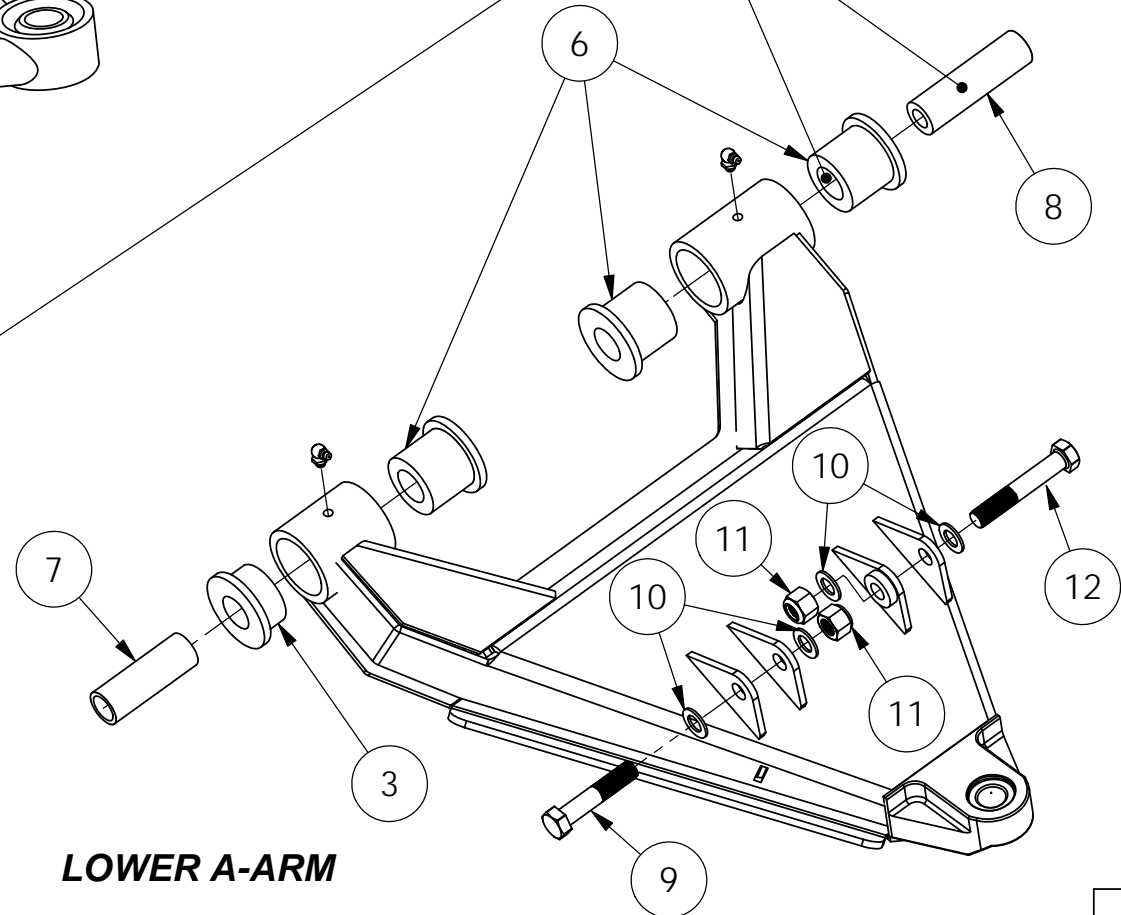
THE INFORMATION CONTAINED IN THIS DRAWING IS THE SOLE PROPERTY OF TOTAL CHAOS FABRICATION. ANY REPRODUCTION IN PART OR AS A WHOLE WITHOUT THE WRITTEN PERMISSION OF TOTAL CHAOS FABRICATION IS PROHIBITED.

\*LEFT SIDE OF TRUCK SHOWN. SOME ITEMS NOT SHOWN FOR CLARITY.

**UPPER A-ARM**



APPLY GENEROUS AMOUNTS OF GREASE TO OUTSIDE OF SLEEVES AND I.D. OF URETHANE BUSHINGS

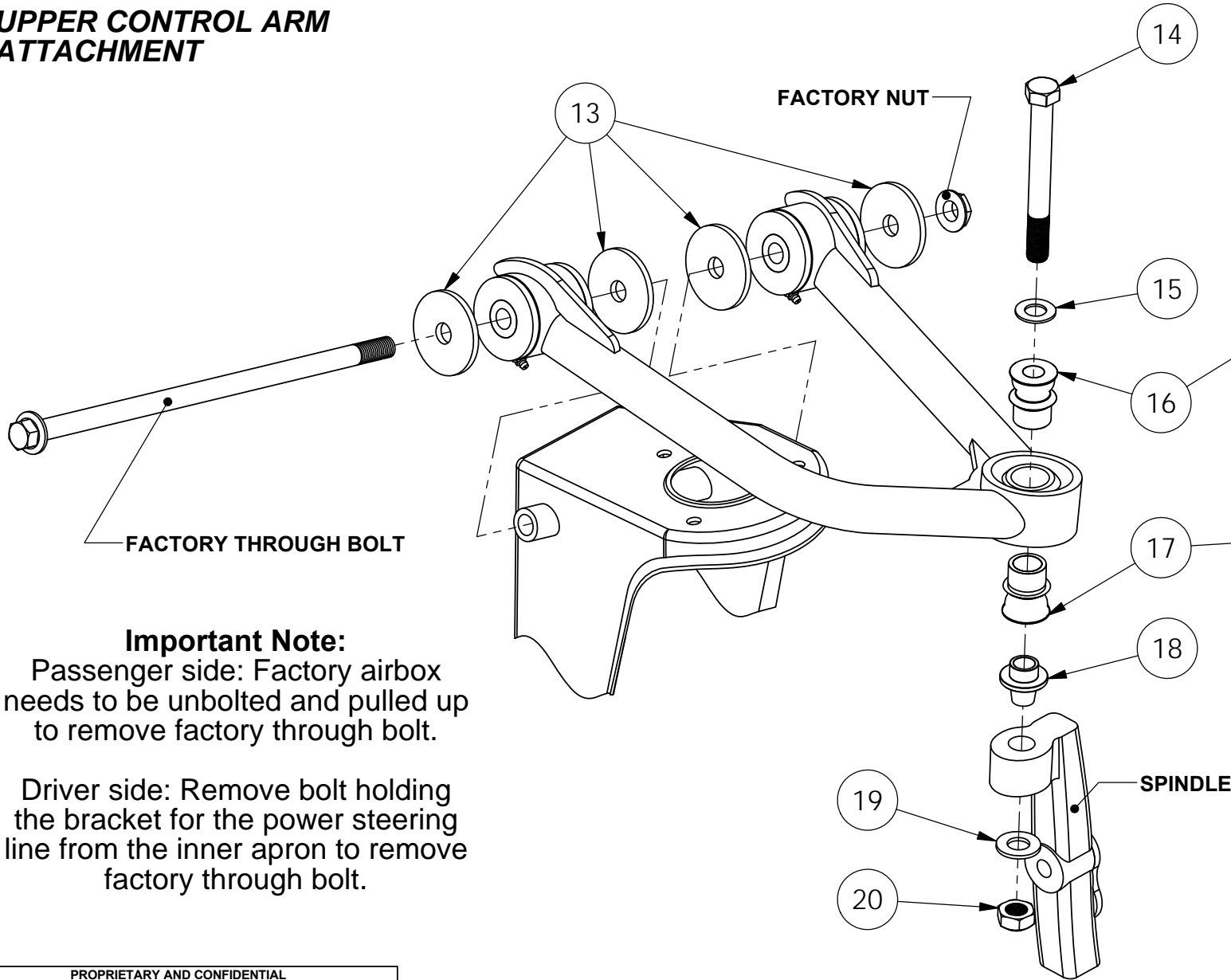


**LOWER A-ARM**

**PROPRIETARY AND CONFIDENTIAL**  
 THE INFORMATION CONTAINED IN THIS DRAWING IS THE SOLE PROPERTY OF TOTAL CHAOS FABRICATION. ANY REPRODUCTION IN PART OR AS A WHOLE WITHOUT THE WRITTEN PERMISSION OF TOTAL CHAOS FABRICATION IS PROHIBITED.

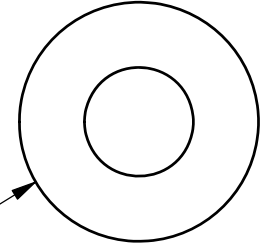
\*LEFT SIDE OF TRUCK SHOWN. SOME ITEMS NOT SHOWN FOR CLARITY.

**UPPER CONTROL ARM ATTACHMENT**

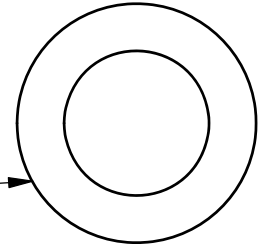


**IMPORTANT NOTE:**  
 During assembly, upper & lower spacers are specific. Failure to follow these instructions will result in damage of all components.

Upper spacer has 9/16" hole



Lower spacer has 3/4" hole

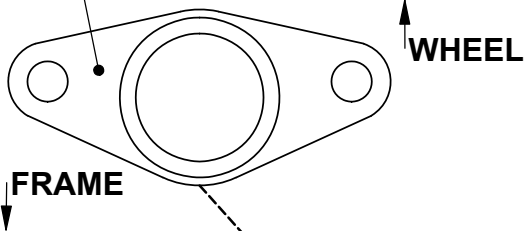


**Important Note:**  
 Passenger side: Factory airbox needs to be unbolted and pulled up to remove factory through bolt.  
 Driver side: Remove bolt holding the bracket for the power steering line from the inner apron to remove factory through bolt.

**PROPRIETARY AND CONFIDENTIAL**  
 THE INFORMATION CONTAINED IN THIS DRAWING IS THE SOLE PROPERTY OF TOTAL CHAOS FABRICATION. ANY REPRODUCTION IN PART OR AS A WHOLE WITHOUT THE WRITTEN PERMISSION OF TOTAL CHAOS FABRICATION IS PROHIBITED.

\*LEFT SIDE OF TRUCK SHOWN. SOME ITEMS NOT SHOWN FOR CLARITY.

UNIBALL CUP MUST BE OFFSET  
TOWARDS ARM. PERMANENT DAMAGE  
TO SPINDLE AND UNIBALL ADAPTER MAY  
OCCUR IF INSTALLED INCORRECTLY.



FACTORY CASTLE NUT  
TO BE RE-INSTALLED  
WITH NEW COTTER PIN.

FACTORY  
HARDWARE

Uses 5/8" Allen

**LOWER CONTROL ARM  
ATTACHMENT**

Requires 1 1/8" thin  
wall socket to tighten

**PROPRIETARY AND CONFIDENTIAL**  
THE INFORMATION CONTAINED IN THIS DRAWING IS THE SOLE  
PROPERTY OF TOTAL CHAOS FABRICATION. ANY REPRODUCTION  
IN PART OR AS A WHOLE WITHOUT THE WRITTEN PERMISSION OF  
TOTAL CHAOS FABRICATION IS PROHIBITED.

\*LEFT SIDE OF TRUCK SHOWN. SOME ITEMS NOT SHOWN FOR CLARITY.

**INSTALLATION NOTES**

The factory manual is required for torque specifications on all hardware. This procedure will involve the removal and re-installation of many parts. Always use factory replacements for worn or damaged parts. Always use new cotter keys during re-installation.

Some items are not shown for clarity.

**In order to retain 4 wheel drive, new axles must be purchased from Total Chaos. Please call for more information.**

**Page 2**

Apply generous amounts of grease to outside of sleeves and I.D. of urethane bushings.

**Page 4**

Torque item #19 to 100ft lbs.

**Page 5**

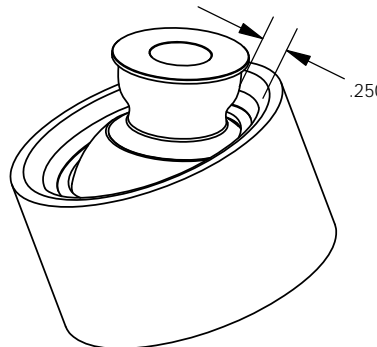
Torque item #27 to 100ft lbs.

Item #34 - Weld as shown, inline with rear lower a-arm shock tab face. Grind frame to bare metal before proceeding to weld. Placement of brake hardline may need to be adjusted on frame before welding.

**Page 6**

After installation is complete (shocks installed), adjust limit strap so that there is a 1/4" gap between the high misalignment spacer and the uniball cup on the upper control arm (see model below). Limit straps will stretch over time and will need to be adjusted periodically to prevent damage to shocks and uniball components.

Weld the included reservoir mounting tabs to frame in a location where the shock reservoir hose is not kinked or bent.



**TOTAL CHAOS Fabrication Inc.**  
**159 North Maple St. Unit J**  
**Corona, CA 92880**  
**951.737.9682**

**WWW.CHAOSFAB.COM**

**PROPRIETARY AND CONFIDENTIAL**

THE INFORMATION CONTAINED IN THIS DRAWING IS THE SOLE PROPERTY OF TOTAL CHAOS FABRICATION. ANY REPRODUCTION IN PART OR AS A WHOLE WITHOUT THE WRITTEN PERMISSION OF TOTAL CHAOS FABRICATION IS PROHIBITED.

**PARTS LIST: 05+ TACOMA/07+ FJ +2" LONG TRAVEL**

ITEM #	PART #	QTY.	ITEM DESCRIPTION
1	86201L	1	CONTROL ARM, FJ +2" UPPER LEFT
	86201R	1	CONTROL ARM, FJ +2" UPPER RIGHT
2	86202L	1	CONTROL ARM, FJ +2" LOWER LEFT
	86202R	1	CONTROL ARM, FJ +2" LOWER RIGHT
3	60684	10	BUSHING, URETHANE SHORT HALF
4	69120	4	SLEEVE, UPPER ARM INNER
5	10005	4	FITTING, GREASE (ZERK)
6	60292	6	BUSHING, URETHANE LONG HALF
7	69702	2	SLEEVE, LOWER ARM FRONT INNER
8	68603	2	SLEEVE, LOWER ARM REAR INNER
9	10025	2	BOLT, 1/2" x 2.50L FRONT SHOCK
10	12003	8	WASHER, 1/2" AN
11	11001	4	NUT, 1/2" NYLOCK
12	10011	2	BOLT, 1/2" x 3.00L SECONDARY SHOCK
	10710	6	BOLT, 3/8" X 1.00L SHOCK MOUNT
	12011	6	WASHER, 3/8" SAE SHOCK MOUNT
	10020	2	BOLT, 1/2" SOCKET HEAD SHOCK
	58621	2	SHOCK CIRCLE, FOX
13	69620	8	WASHER, UPPER ARM
14	10251	2	BOLT, 9/16" x 5.00L
15	12203	2	WASHER, 9/16" AN
16	100916	2	SPACER, TOP UPPER ARM MISALIGNMENT
17	10034TCF	2	SPACER, BOTTOM UPPER ARM MISALIGNMENT
18	30004	2	SLEEVE, 9/16" TAPERED ADAPTER
19	12204	2	WASHER, 9/16" SAE
20	11202	2	NUT, 9/16" C-LOCK
21	99015-2	2	EXTENSION, 15MM TIEROD
22	10342	2	BOLT, 3/4" x 4.25L SOCKET HEAD
23	10034C	2	SPACER, TOP LOWER ARM MISALIGNMENT
24	68614	2	ADAPTER, LOWER UNIBALL 2-BOLT FLANGE
25	10034T	2	SPACER, BOTTOM LOWER ARM MISALIGNMENT
26	12304	2	WASHER, 3/4" SAE
27	11302	2	NUT, 3/4" GRADE C LOCK
28	10616	4	BOLT, 16MM X 45MM FLANGE HEAD
29	69619	2	BRACKET, LIMIT STRAP CLEVIS, WELD ON
	69618	2	CLEVIS, ADJUSTABLE LIMIT STRAP
	69611	2	STRAP, 11" LIMIT
	68610	2	THREADED SPACER, BUMPSTOP
	69610	2	WASHER, 1/4" BUMPSTOP
	86330	2	LINE, EXTENDED BRAKE
	33301	4	CLIP, BRAKELINE RETAINING

\*LEFT SIDE OF TRUCK SHOWN. SOME ITEMS NOT SHOWN FOR CLARITY.