

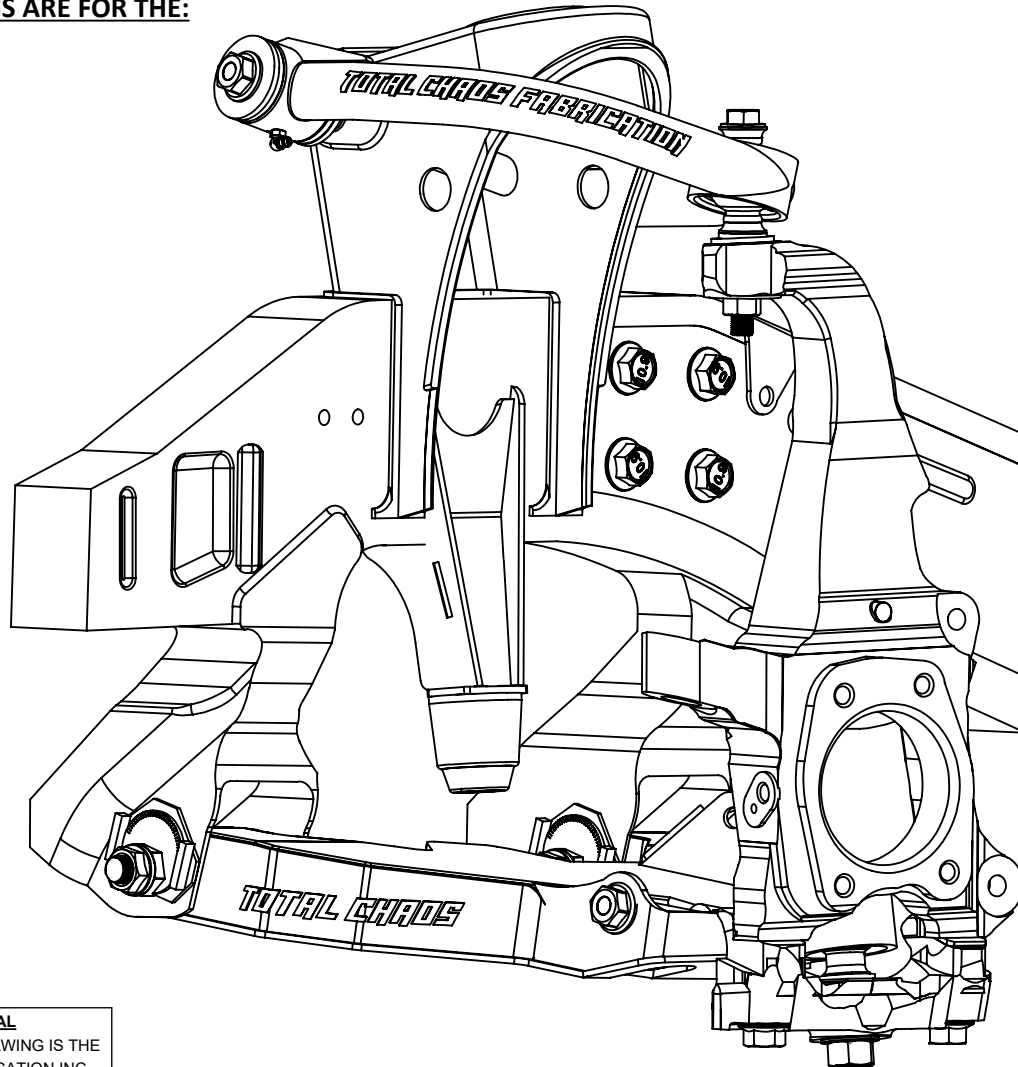
# INSTALLATION INSTRUCTIONS

## EXPEDITION SERIES LOWER CONTROL ARMS

86524-E

DATE: 6/9/2025  
REV: 01  
PAGE: 1 OF 4  
DRAWN: MB

INSTALLATION DRAWINGS ARE FOR THE:  
**2024+ TACOMA**



**PROPRIETARY AND CONFIDENTIAL**

THE INFORMATION CONTAINED IN THIS DRAWING IS THE  
SOLE PROPERTY OF TOTAL CHAOS FABRICATION INC.  
ANY REPRODUCTION IN PART OR AS A WHOLE WITHOUT  
THE WRITTEN PERMISSION OF TOTAL CHAOS  
FABRICATION INC IS PROHIBITED.

\*LEFT SIDE OF TRUCK SHOWN. SOME ITEMS NOT SHOWN FOR CLARITY

# INSTALLATION INSTRUCTIONS

## EXPEDITION SERIES LOWER CONTROL ARMS

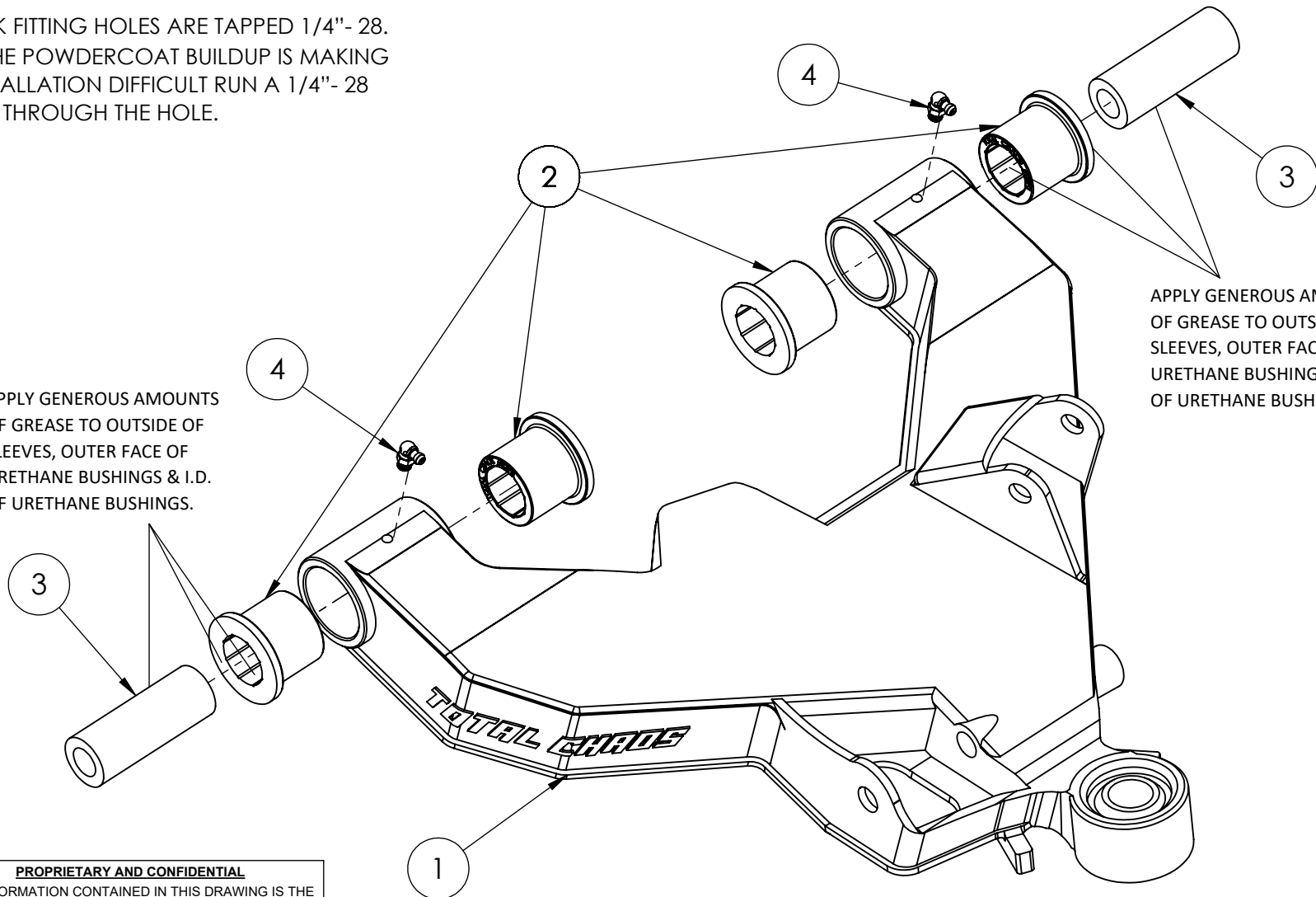
**86524-E**

DATE: 6/9/2025  
REV: 01  
PAGE: 2 OF 4  
DRAWN: MB

ZERK FITTING HOLES ARE TAPPED 1/4"- 28.  
IF THE POWDERCOAT BUILDUP IS MAKING  
INSTALLATION DIFFICULT RUN A 1/4"- 28  
TAP THROUGH THE HOLE.

APPLY GENEROUS AMOUNTS  
OF GREASE TO OUTSIDE OF  
SLEEVES, OUTER FACE OF  
URETHANE BUSHINGS & I.D.  
OF URETHANE BUSHINGS.

APPLY GENEROUS AMOUNTS  
OF GREASE TO OUTSIDE OF  
SLEEVES, OUTER FACE OF  
URETHANE BUSHINGS & I.D.  
OF URETHANE BUSHINGS.



**PROPRIETARY AND CONFIDENTIAL**

THE INFORMATION CONTAINED IN THIS DRAWING IS THE  
SOLE PROPERTY OF TOTAL CHAOS FABRICATION INC.  
ANY REPRODUCTION IN PART OR AS A WHOLE WITHOUT  
THE WRITTEN PERMISSION OF TOTAL CHAOS  
FABRICATION INC IS PROHIBITED.

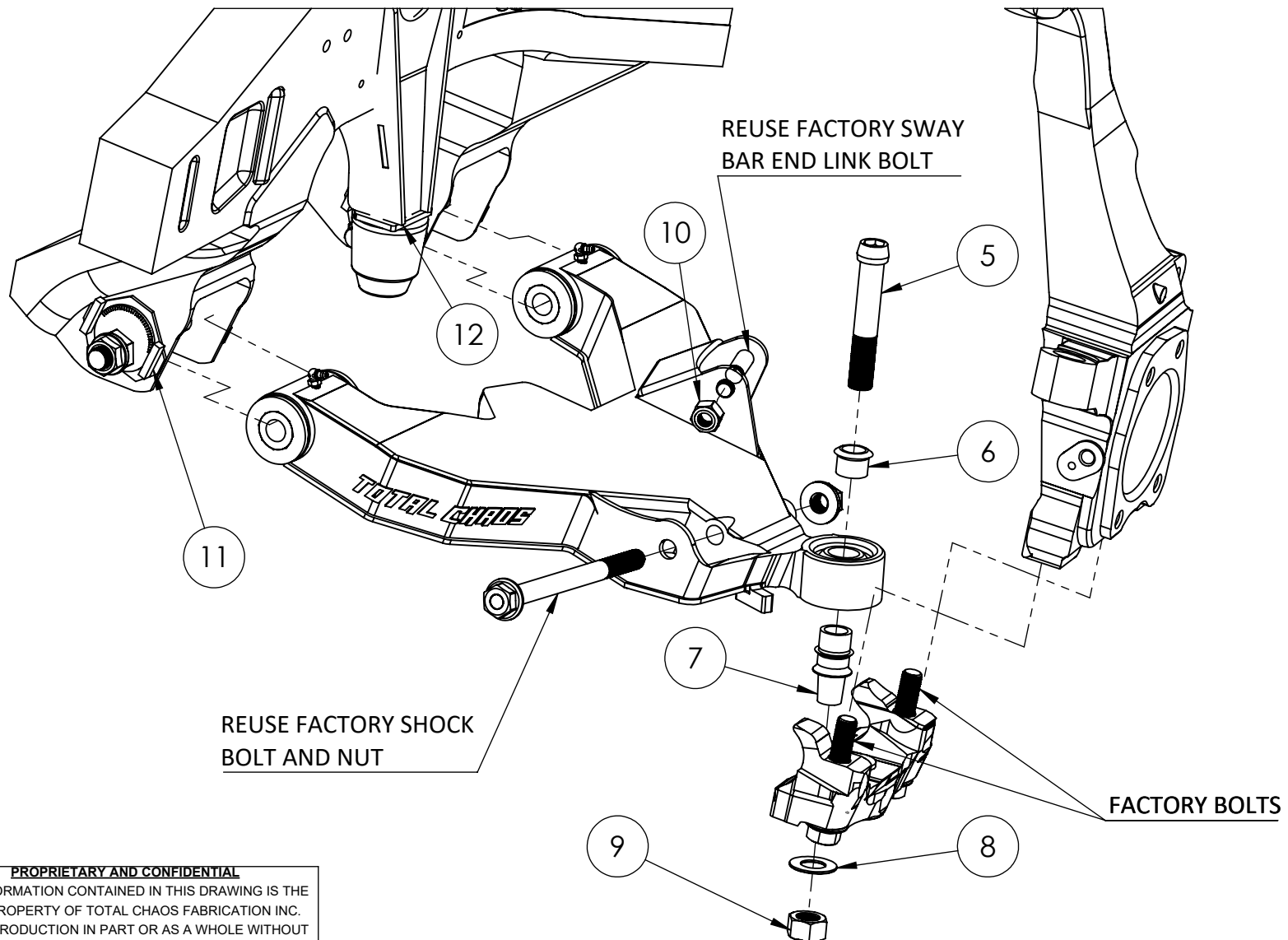
\*LEFT SIDE OF TRUCK SHOWN. SOME ITEMS NOT SHOWN FOR CLARITY

# INSTALLATION INSTRUCTIONS

## EXPEDITION SERIES LOWER CONTROL ARMS

86524-E

DATE: 6/9/2025  
 REV: 01  
 PAGE: 3 OF 4  
 DRAWN: MB



**PROPRIETARY AND CONFIDENTIAL**

THE INFORMATION CONTAINED IN THIS DRAWING IS THE SOLE PROPERTY OF TOTAL CHAOS FABRICATION INC. ANY REPRODUCTION IN PART OR AS A WHOLE WITHOUT THE WRITTEN PERMISSION OF TOTAL CHAOS FABRICATION INC IS PROHIBITED.

\*LEFT SIDE OF TRUCK SHOWN. SOME ITEMS NOT SHOWN FOR CLARITY

# INSTALLATION INSTRUCTIONS

## EXPEDITION SERIES LOWER CONTROL ARMS

**86524-E**

DATE: 6/9/2025  
 REV: 01  
 PAGE: 4 OF 4  
 DRAWN: MB

### INSTALLATION NOTES:

- THE FACTORY MANUAL IS REQUIRED FOR TORQUE SPECIFICATIONS ON ALL FACTORY HARDWARE. THIS PROCEDURE WILL INVOLVE THE REMOVAL AND RE-INSTALLATION OF MANY PARTS. ALWAYS USE FACTORY REPLACEMENTS FOR WORN OR DAMAGED PARTS
- SOME ITEMS ARE NOT SHOWN FOR CLARITY
- **PAGE 2:** APPLY GENEROUS AMOUNTS OF GREASE TO OUTSIDE OF SLEEVES, OUTER FACE OF URETHANE BUSHINGS & I.D. OF URETHANE BUSHINGS
- **PAGE 3:** TORQUE ITEM #5 TO 110 FT/LBS
- INSPECT ALL COMPONENTS AND RE-TORQUE ALL HARDWARE WITHIN 500 MILES

TOTAL CHAOS FABRICATION  
 159 N. MAPLE ST. UNIT J  
 CORONA, CA 92878  
 951.737.9682

#### PROPRIETARY AND CONFIDENTIAL

THE INFORMATION CONTAINED IN THIS DRAWING IS THE SOLE PROPERTY OF TOTAL CHAOS FABRICATION INC. ANY REPRODUCTION IN PART OR AS A WHOLE WITHOUT THE WRITTEN PERMISSION OF TOTAL CHAOS FABRICATION INC IS PROHIBITED.

### PARTS LIST: 86524-E LOWER CONTROL ARM

ITEM #	PART #	QTY	ITEM DESCRIPTION
1	86524-E-L	1	LEFT LOWER CONTROL ARM
	86524-E-R	1	RIGHT LOWER CONTROL ARM
2	60293	8	BUSHING - URETHANE HALF
3	68630	4	INNER SLEEVE
4	10005	4	FITTING - GREASE (ZERK)
5	10342	2	BOLT - 3/4" x 4.25" CUSTOM
6	10034-C	2	SPACER - 3/4" MISALIGNMENT
7	10034-TUN	2	SPACER - 3/4" TAPERED MISALIGNMENT
8	12304	2	WASHER - 3/4" SAE
9	11302	2	NUT - 3/4" C-LOCK
10	11140	2	NUT - M14 NYLOCK
11*	59824	1	CAM TAB GUSSETS
12*	86524-E-BUMP	1	WELD-ON BUMP STOPS

\*SOLD SEPARATELY

### 86524-E MAINTENANCE REBUILD KITS

PART #	QTY	DESCRIPTION
FK-REP-KIT	1	1" STAINLESS UNIBALL AND SNAP RING REPAACEMENT KIT (PAIR)
96006-ALU	1	ALUMINUM UNIBALL PRESS TOOL
TC-G1	1	HUSH BUTTER SYNTHETIC BUSHING GREASE W/PTFE 14OZ

\*LEFT SIDE OF TRUCK SHOWN. SOME ITEMS NOT SHOWN FOR CLARITY