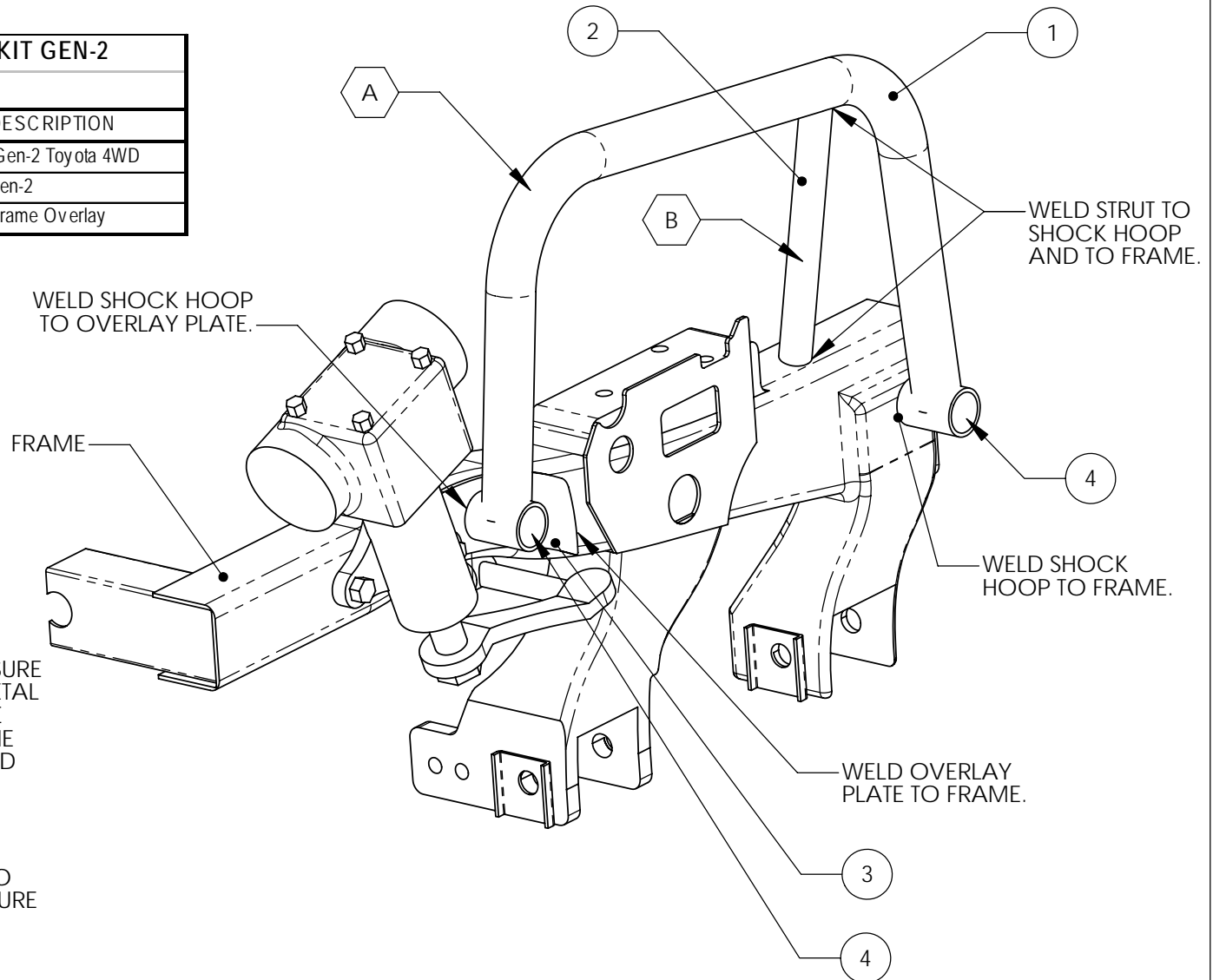


THESE INSTALLATION DRAWINGS ARE FOR THE 4x4 "CADDY KIT" GEN-2. USING FOX OR KING SHOCKS. SWAY-A-WAY SHOCKS REQUIRE SHORTENING OF ITEMS 8 & 9 BY 1 1/4".

PARTS LIST: TOYOTA 86-95 4WD CADDY KIT GEN-2			
SHOCK HOOP / DUAL 8" TRAVEL 2.5			
ITEM #	PART #	QTY. (per kit)	ITEM DESCRIPTION
1	59562	2	Hoop, Gen-2 Toyota 4WD
2	59563	2	Strut, Gen-2
3	59568	2	Plate, Frame Overlay



WELDING NOTES:

- A** WHEN WELDING TO THE FRAME BE SURE ALL SURFACES ARE CLEAN BARE METAL FRONT PART OF HOOP NEEDS TO BE WELDED TO THE OVERLAY PLATE. THE OVERLAY PLAT NEEDS TO BE WELDED TO THE FRAME. BOTH FRONT AND BACK ENDS OF HOOP NEED TO BE WELDED TO CENTER OF THE FRAME.
- B** THE STRUT NEEDS TO BE MODIFIED TO FIT THE HOOP AND THE FRAME. BE SURE STRUT DOES NOT INTERFERE WITH SHOCK OR SHOCK TABS.

PROPRIETARY AND CONFIDENTIAL

THE INFORMATION CONTAINED IN THIS DRAWING IS THE SOLE PROPERTY OF TOTAL CHAOS FABRICATION. ANY REPRODUCTION IN PART OR AS A WHOLE WITHOUT THE WRITTEN PERMISSION OF TOTAL CHAOS FABRICATION IS PROHIBITED.

*LEFT SIDE OF TRUCK SHOWN. SOME ITEMS NOT SHOWN FOR CLARITY.

INSTALLATION INSTRUCTIONS

TOYOTA: 86-95 4WD CADDY KIT GEN-2 SHOCK HOOP, Part #: 95602

DATE: 04.25.05
 SCALE: N.T.S.
 PAGE: 2 OF 2
 DRAWN: JH

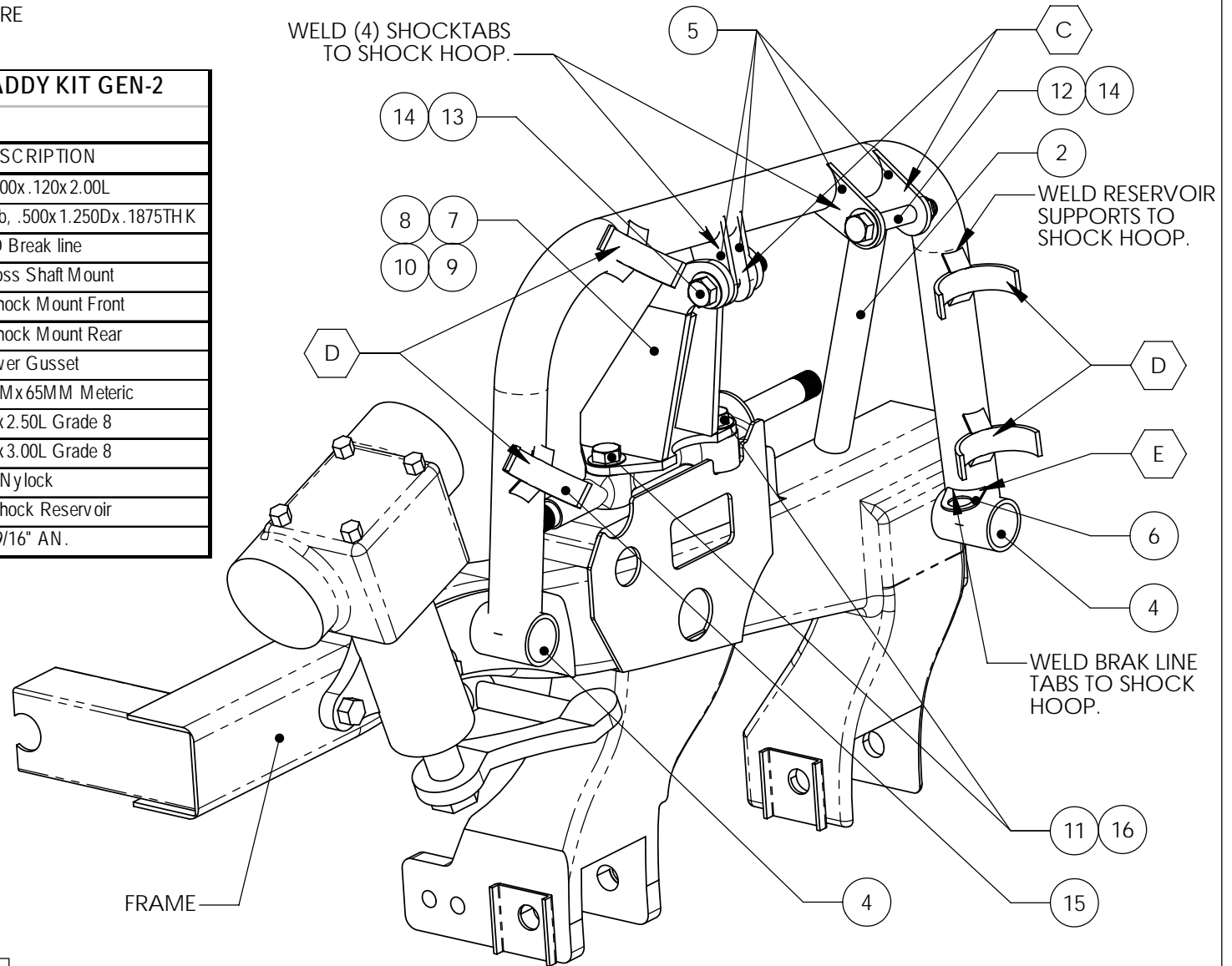
THESE INSTALLATION DRAWINGS ARE FOR THE 4x4 "CADDY KIT" GEN-2. USING FOX OR KING SHOCKS. SWAY-A-WAY SHOCKS REQUIRE SHORTENING OF ITEMS 8 & 9 BY 1 1/4".

PARTS LIST: TOYOTA 86-95 4WD CADDY KIT GEN-2
SHOCK HOOP / DUAL 8" TRAVEL 2.5

ITEM #	PART #	QTY. (per kit)	ITEM DESCRIPTION
4	59620	4	Boss, 1.500x.120x2.00L
5	59627	8	Shock Tab, .500x1.250Dx.1875THK
6	59605	2	Tab, 650D Break line
7	59564	2	Plate, Cross Shaft Mount
8	59565	2	Tower, Shock Mount Front
9	59566	2	Tower, Shock Mount Rear
10	59567	2	Plate, Tower Gusset
11	10614	6	Bolt, 14MMx65MM Metric
12	10025	2	Bolt, 1/2"x2.50L Grade 8
13	10030	2	Bolt, 1/2"x3.00L Grade 8
14	11001	8	Nut, 1/2" Nylock
15	59204	8	Cradle, Shock Reservoir
16	12203	6	Washer, 9/16" AN.

WELDING NOTES:

- C** SPACING BETWEEN TABS SHOULD REFLECT SHOCKS (1.5" APART).
- D** WELD AS SHOWN. SPACING SHOULD REFLECT RESERVOIR DIMENSIONS.
- E** BRAKE LINE TAB NEEDS TO BE POSITIONED AS SHOWN.



PROPRIETARY AND CONFIDENTIAL
 THE INFORMATION CONTAINED IN THIS DRAWING IS THE SOLE PROPERTY OF TOTAL CHAOS FABRICATION. ANY REPRODUCTION IN PART OR AS A WHOLE WITHOUT THE WRITTEN PERMISSION OF TOTAL CHAOS FABRICATION IS PROHIBITED.

*LEFT SIDE OF TRUCK SHOWN. SOME ITEMS NOT SHOWN FOR CLARITY.