

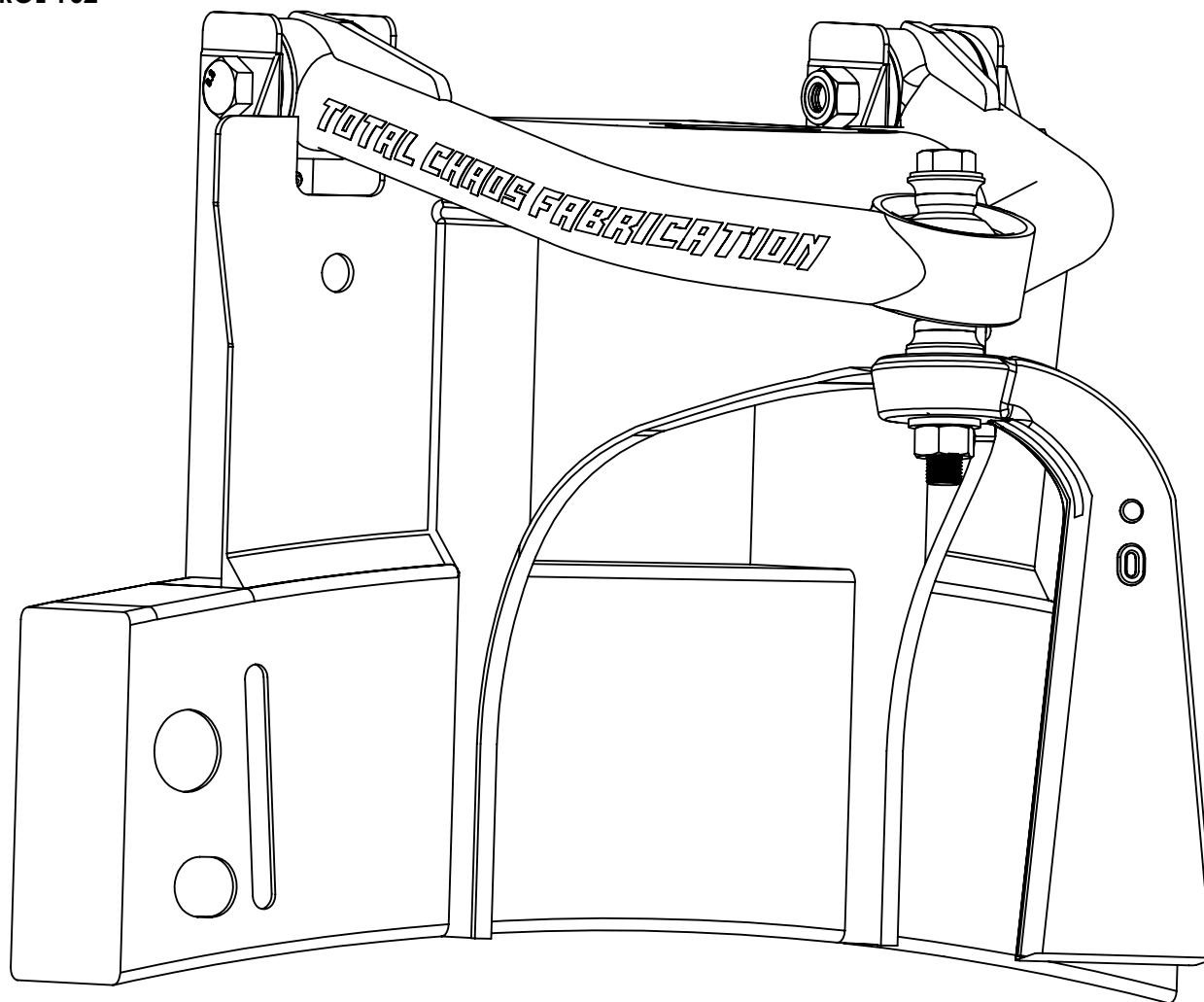
# INSTALLATION INSTRUCTIONS

## UNIBALL UPPER CONTROL ARMS

**TC-90504**

DATE: 6/25/2025  
REV: 00  
PAGE: 1 OF 4  
DRAWN: MB

**INSTALLATION DRAWINGS ARE FOR THE:  
2010-2024 NISSAN PATROL Y62**



**PROPRIETARY AND CONFIDENTIAL**

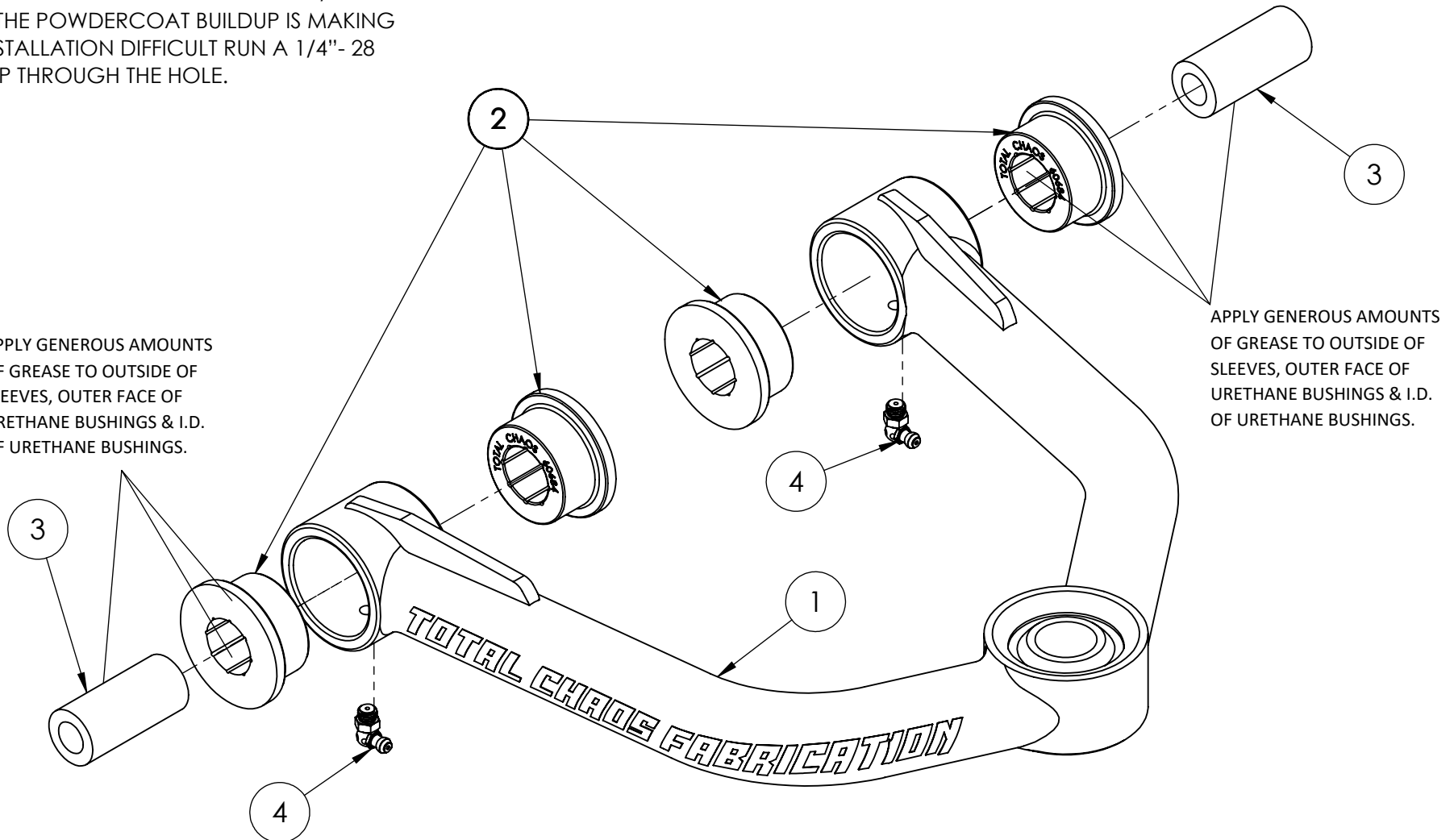
THE INFORMATION CONTAINED IN THIS DRAWING IS THE  
SOLE PROPERTY OF TOTAL CHAOS FABRICATION INC.  
ANY REPRODUCTION IN PART OR AS A WHOLE WITHOUT  
THE WRITTEN PERMISSION OF TOTAL CHAOS  
FABRICATION INC IS PROHIBITED.

\*LEFT SIDE OF TRUCK SHOWN. SOME ITEMS NOT SHOWN FOR CLARITY

ZERK FITTING HOLES ARE TAPPED 1/4"- 28.  
IF THE POWDERCOAT BUILDUP IS MAKING  
INSTALLATION DIFFICULT RUN A 1/4"- 28  
TAP THROUGH THE HOLE.

APPLY GENEROUS AMOUNTS  
OF GREASE TO OUTSIDE OF  
SLEEVES, OUTER FACE OF  
URETHANE BUSHINGS & I.D.  
OF URETHANE BUSHINGS.

APPLY GENEROUS AMOUNTS  
OF GREASE TO OUTSIDE OF  
SLEEVES, OUTER FACE OF  
URETHANE BUSHINGS & I.D.  
OF URETHANE BUSHINGS.



**PROPRIETARY AND CONFIDENTIAL**

THE INFORMATION CONTAINED IN THIS DRAWING IS THE  
SOLE PROPERTY OF TOTAL CHAOS FABRICATION INC.  
ANY REPRODUCTION IN PART OR AS A WHOLE WITHOUT  
THE WRITTEN PERMISSION OF TOTAL CHAOS  
FABRICATION INC IS PROHIBITED.

\*LEFT SIDE OF TRUCK SHOWN. SOME ITEMS NOT SHOWN FOR CLARITY

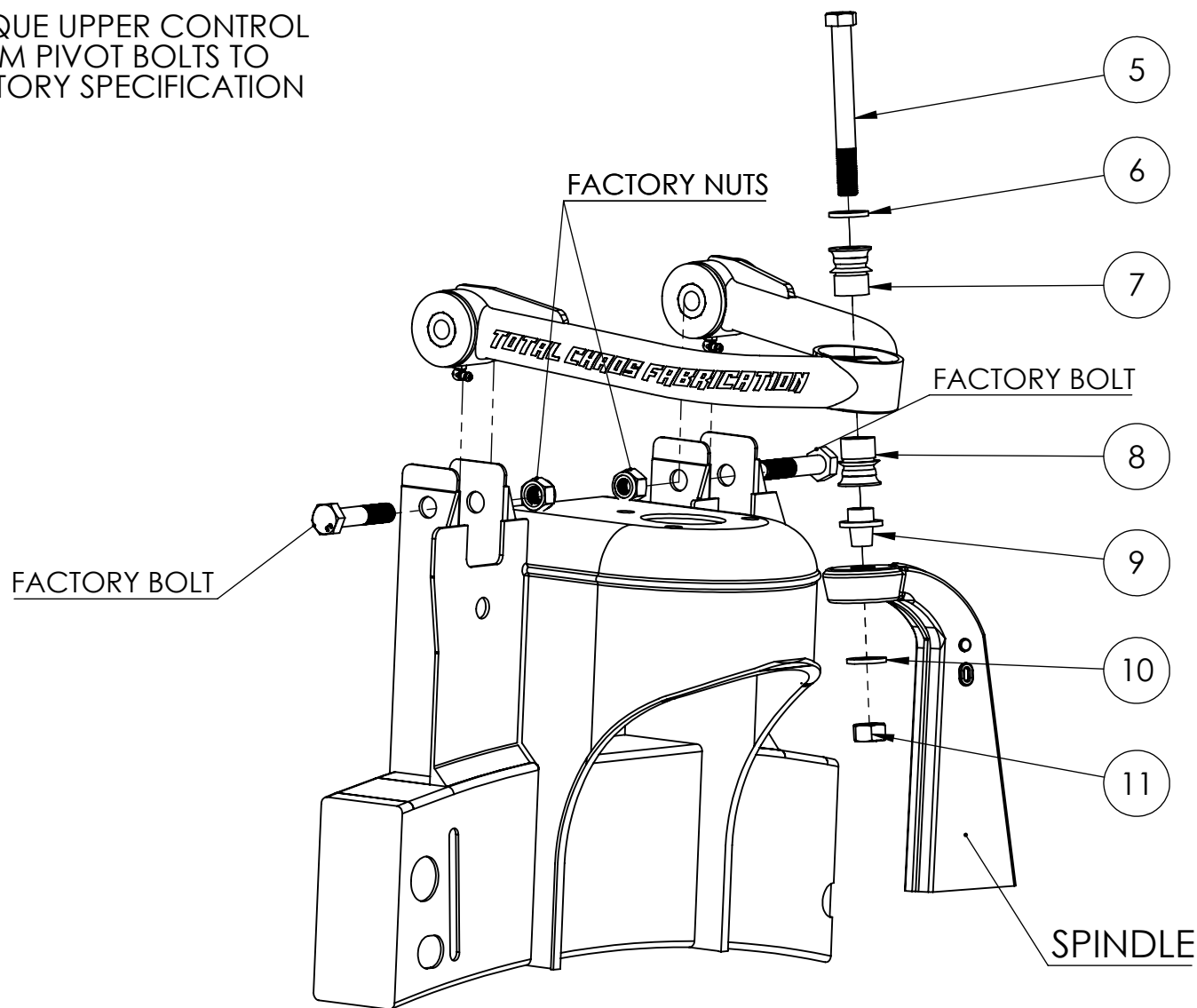
# INSTALLATION INSTRUCTIONS

## UNIBALL UPPER CONTROL ARMS

**TC-90504**

DATE: 6/25/2025  
REV: 00  
PAGE: 3 OF 4  
DRAWN: MB

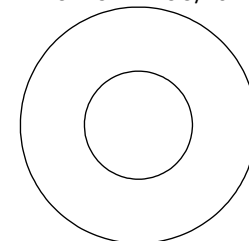
TORQUE UPPER CONTROL  
ARM PIVOT BOLTS TO  
FACTORY SPECIFICATION



### IMPORTANT NOTICE:

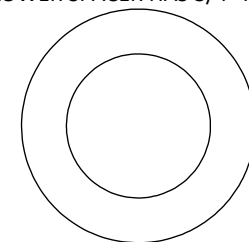
DURING ASSEMBLY, UPPER &  
LOWER SPACERS ARE SPECIFIC.  
FAILURE TO FOLLOW THESE  
INSTRUCTIONS WILL RESULTS IN  
DAMAGE OF ALL COMPONENTS.

UPPER SPACER HAS 9/16" HOLE



#7

LOWER SPACER HAS 3/4" HOLE



#8

WHEN ROTATING THE UCA DOWN TO  
MATE UP TO THE SPINDLE, ENSURE  
THE HI-MISALIGNMENT SPACERS STAY  
FULLY SEATED IN THE UNIBALL.  
DAMAGE MAY OCCUR IF THEY ARE  
ONLY PARTIALLY SEATED WHILE THE  
UNIBALL BOLT IS BEING TIGHTENED.

### PROPRIETARY AND CONFIDENTIAL

THE INFORMATION CONTAINED IN THIS DRAWING IS THE  
SOLE PROPERTY OF TOTAL CHAOS FABRICATION INC.  
ANY REPRODUCTION IN PART OR AS A WHOLE WITHOUT  
THE WRITTEN PERMISSION OF TOTAL CHAOS  
FABRICATION INC IS PROHIBITED.

\*LEFT SIDE OF TRUCK SHOWN. SOME ITEMS NOT SHOWN FOR CLARITY

# INSTALLATION INSTRUCTIONS

## UNIBALL UPPER CONTROL ARMS

**TC-90504**

DATE: 6/25/2025  
 REV: 00  
 PAGE: 4 OF 4  
 DRAWN: MB

### INSTALLATION NOTES:

- THE FACTORY MANUAL IS REQUIRED FOR TORQUE SPECIFICATIONS ON ALL FACTORY HARDWARE. THIS PROCEDURE WILL INVOLVE THE REMOVAL AND RE-INSTALLATION OF MANY PARTS. ALWAYS USE FACTORY REPLACEMENTS FOR WORN OR DAMAGED PARTS
- SOME ITEMS ARE NOT SHOWN FOR CLARITY
- **PAGE 2:** APPLY GENEROUS AMOUNTS OF GREASE TO OUTSIDE OF SLEEVES, OUTER FACE OF URETHANE BUSHINGS & I.D. OF URETHANE BUSHINGS
- **PAGE 3:** TORQUE ITEM #5 TO 90 FT/LBS
- INSPECT ALL COMPONENTS AND RE-TORQUE ALL HARDWARE WITHIN 500 MILES

TOTAL CHAOS FABRICATION  
 159 N. MAPLE ST. UNIT J  
 CORONA, CA 92878  
 951.737.9682

PARTS LIST: TC-90504 UPPER CONTROL ARM			
ITEM #	PART #	QTY	ITEM DESCRIPTION
1	99054-L	1	LEFT LOWER CONTROL ARM
	99054-R	1	RIGHT LOWER CONTROL ARM
2	60684	8	BUSHING - URETHANE HALF
3	69120	4	INNER SLEEVE
4	10005	4	FITTING - GREASE (ZERK)
5	10251	2	BOLT - 9/16" x 5"
6	12203	2	WASHER - 9/16" AN
7	100916	2	SPACER - 9/16" MISALIGNMENT
8	10034-TCF	2	SPACER - 3/4" MISALIGNMENT
9	30009	2	ADAPTER - 9/16" TAPERED SPINDLE ADAPTER
10	12204	2	WASHER - 9/16" SAE
11	11202	2	NUT - 9/16" C-LOCK

UCA MAINTENANCE REBUILD KITS		
PART #	QTY	DESCRIPTION
FK-REP-KIT	1	1" STAINLESS UNIBALL AND SNAP RING REPACEMENT KIT (PAIR)
69000	1	POLYURETHANE BUSHING KIT UCA (8 BUSHING HALFS)
96006-ALU	1	ALUMINUM UNIBALL PRESS TOOL
TC-G1	1	HUSH BUTTER SYNTHETIC BUSHING GREASE W/PTFE 14OZ

#### PROPRIETARY AND CONFIDENTIAL

THE INFORMATION CONTAINED IN THIS DRAWING IS THE SOLE PROPERTY OF TOTAL CHAOS FABRICATION INC. ANY REPRODUCTION IN PART OR AS A WHOLE WITHOUT THE WRITTEN PERMISSION OF TOTAL CHAOS FABRICATION INC IS PROHIBITED.

\*LEFT SIDE OF TRUCK SHOWN. SOME ITEMS NOT SHOWN FOR CLARITY