



CHAOSFAB.COM

INSTALLATION INSTRUCTIONS

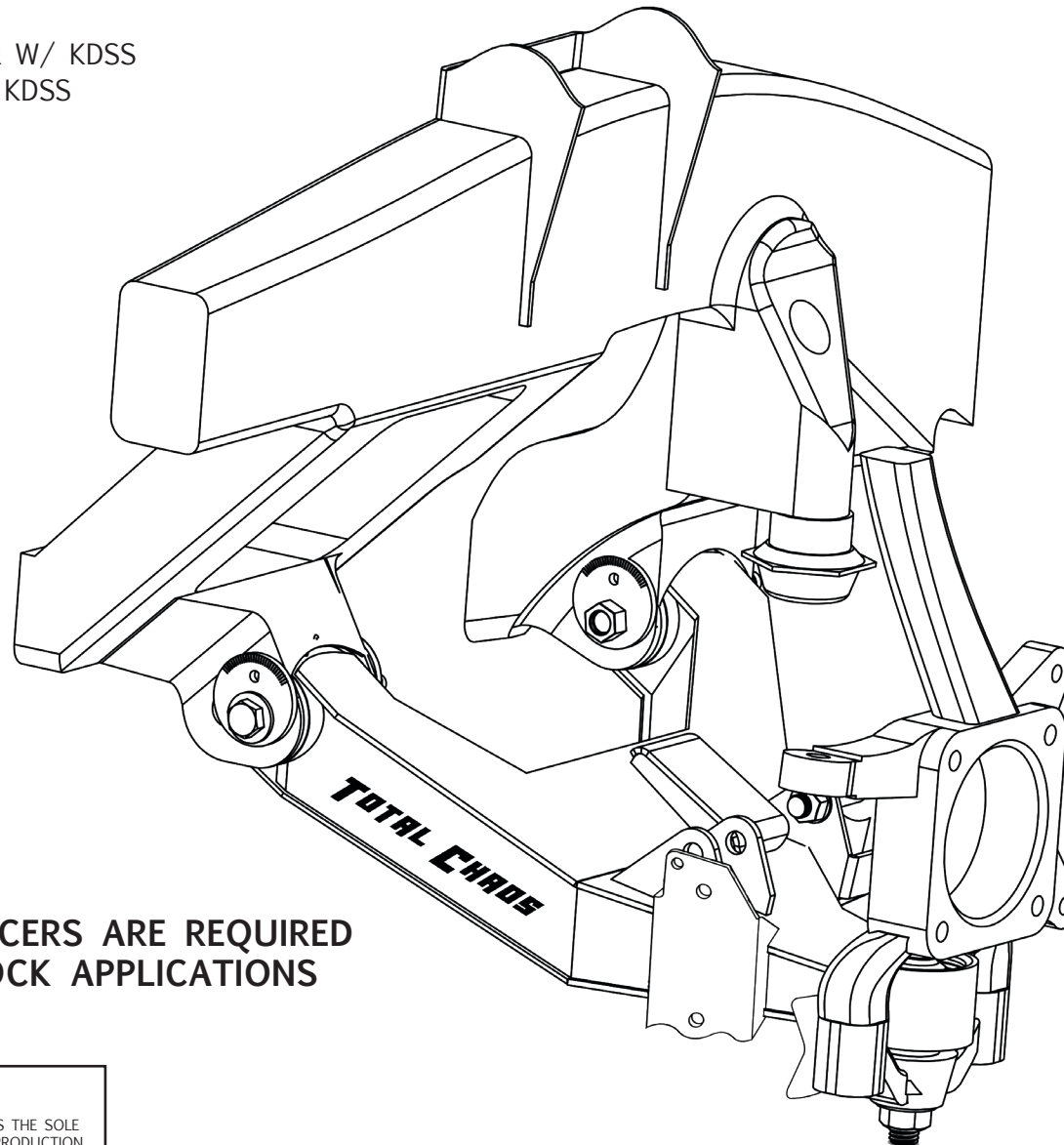
EXPEDITION SERIES LOWER CONTROL ARMS

86555-E-10FJ-KDSS
86555-E-10FJ-KDSS-NSS

DATE: 4.24.19
REV: 01
SCALE: N.T.S.
PAGE: 1 OF 4
DRAWN: CM

DESIGNED TO FIT:

2010+ TOYOTA 4RUNNER W/ KDSS
2010+ LEXUS GX460 W/ KDSS



**1.25" WHEEL SPACERS ARE REQUIRED
FOR DUAL SHOCK APPLICATIONS**

PROPRIETARY AND CONFIDENTIAL

THE INFORMATION CONTAINED IN THIS DRAWING IS THE SOLE
PROPERTY OF TOTAL CHAOS FABRICATION. ANY REPRODUCTION
IN PART OR AS A WHOLE WITHOUT THE WRITTEN PERMISSION
OF TOTAL CHAOS FABRICATION IS PROHIBITED.



CHAOSFAB.COM

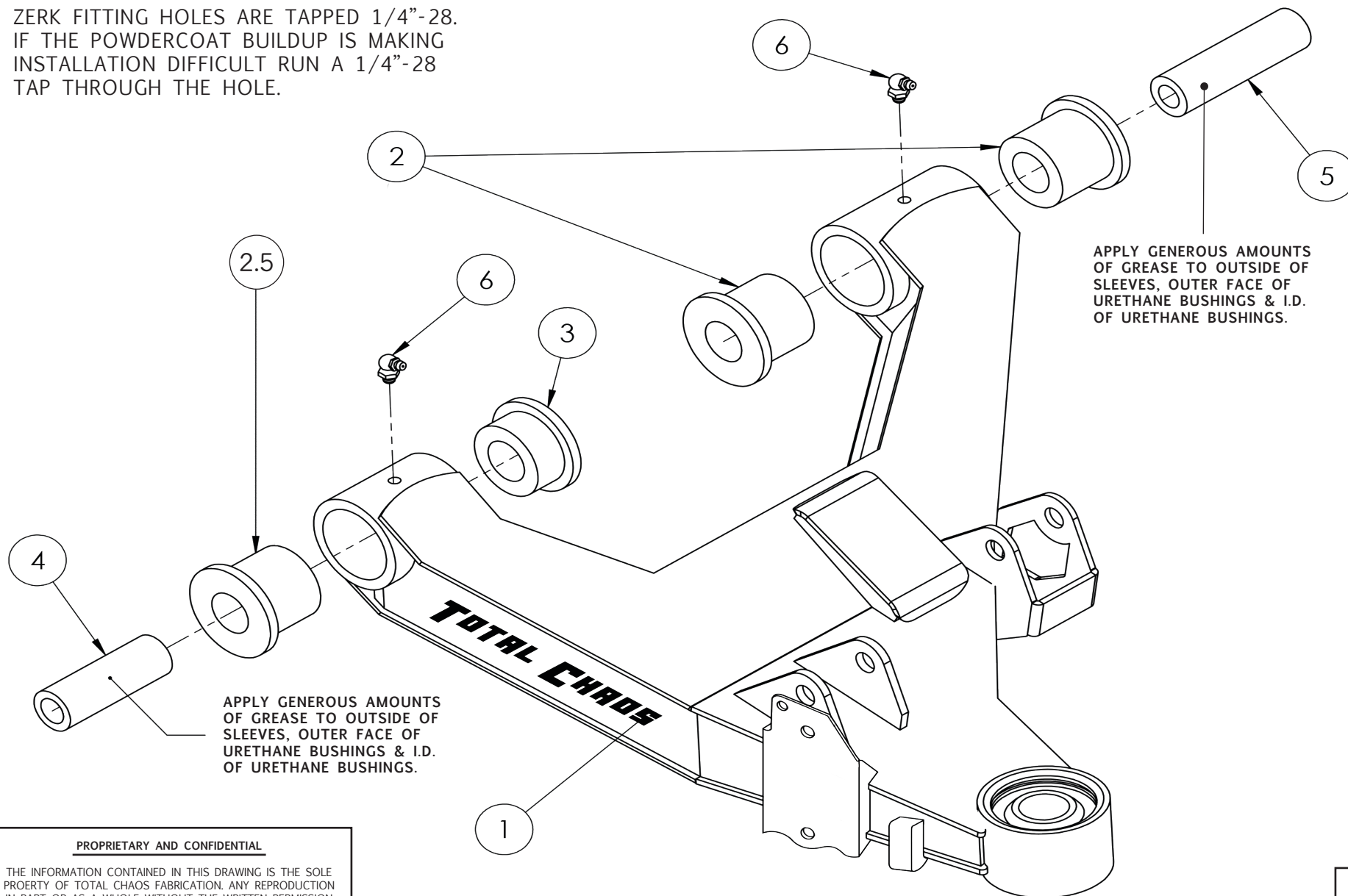
INSTALLATION INSTRUCTIONS

EXPEDITION SERIES LOWER CONTROL ARMS

86555-E-10FJ-KDSS
86555-E-10FJ-KDSS-NSS

DATE: 4.24.19
REV: 01
SCALE: N.T.S.
PAGE: 2 OF 4
DRAWN: CM

ZERK FITTING HOLES ARE TAPPED 1/4"-28.
IF THE POWDERCOAT BUILDUP IS MAKING
INSTALLATION DIFFICULT RUN A 1/4"-28
TAP THROUGH THE HOLE.



PROPRIETARY AND CONFIDENTIAL

THE INFORMATION CONTAINED IN THIS DRAWING IS THE SOLE
PROPERTY OF TOTAL CHAOS FABRICATION. ANY REPRODUCTION
IN PART OR AS A WHOLE WITHOUT THE WRITTEN PERMISSION
OF TOTAL CHAOS FABRICATION IS PROHIBITED.



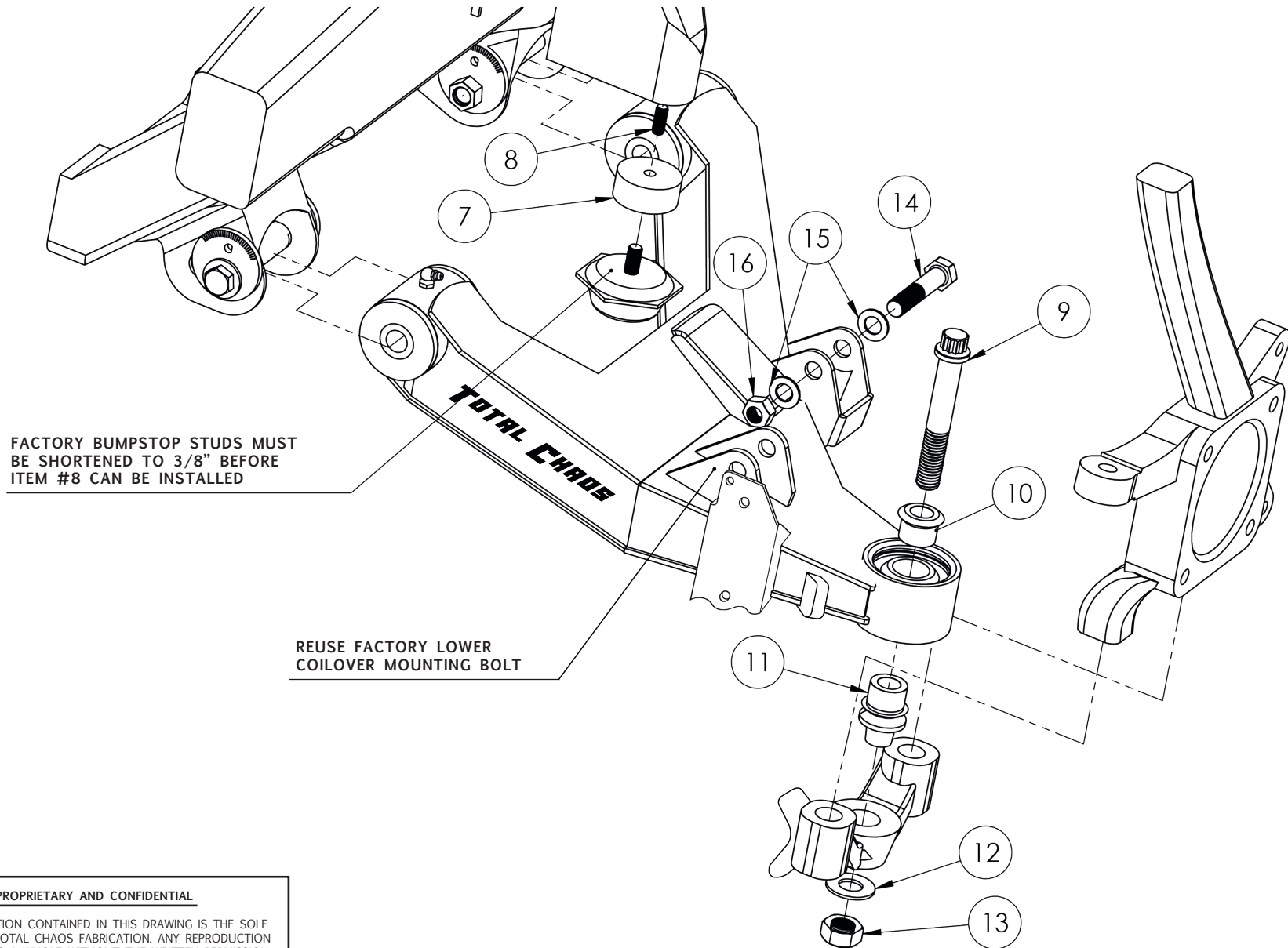
CHAOSFAB.COM

INSTALLATION INSTRUCTIONS

EXPEDITION SERIES LOWER CONTROL ARMS

86555-E-10FJ-KDSS
86555-E-10FJ-KDSS-NSS

DATE: 4.24.19
REV: 01
SCALE: N.T.S.
PAGE: 3 OF 4
DRAWN: CM



INSTALLATION INSTRUCTIONS

EXPEDITION SERIES LOWER CONTROL ARMS

86555-E-10FJ-KDSS
86555-E-10FJ-KDSS-NSS

DATE: 4.24.19
REV: 01
SCALE: N.T.S.
PAGE: 4 OF 4
DRAWN: CM

INSTALLATION NOTES

- THE FACTORY MANUAL IS REQUIRED FOR TORQUE SPECIFICATIONS ON ALL HARDWARE. THIS PROCEDURE WILL INVOLVE THE REMOVAL AND RE-INSTALLATION OF MANY PARTS. ALWAYS USE FACTORY REPLACEMENTS FOR WORN OR DAMAGED PARTS. ALWAYS USE NEW COTTER KEYS DURING RE-INSTALLATION.
- SOME ITEMS ARE NOT SHOWN FOR CLARITY
- PAGE 2
APPLY GENEROUS AMOUNTS OF GREASE TO OUTSIDE OF SLEEVES, OUTER FACE OF URETHANE BUSHINGS & I.D. OF URETHANE BUSHINGS
- PAGE 3
TORQUE ITEM #9 TO 100 FT/LBS
- FACTORY BUMPSTOPS STUDS MUST BE SHORTENED TO 3/8" BEFORE ITEM #8 CAN BE INSTALLED.
- IF FACTORY SHOCKS FROM A 2010+ 4RUNNER, FJ, OR GX460 ARE BEING USED, YOU WILL NEED TO SAND DOWN THE LOWER ROD END SPACERS TO FIT BETWEEN THE SHOCK TABS.

PARTS LIST

ITEM #	PART #	QTY	ITEM DESCRIPTION
1	86525-E-L-KDSS	1	LOWER LEFT CONTROL ARM
	86525-E-R-KDSS	1	LOWER RIGHT CONTROL ARM
2	60292	4	BUSHING - URETHANE LONG HALF 1" ID
2.5	60293	2	BUSHING - URETHANE LONG HALF 1.25" ID
3	60685	2	BUSHING - URETHANE SHORT HALF 1.25" ID
4	68606	2	INNER SLEEVE - LOWER ARM FRONT
5	68607	2	INNER SLEEVE - LOWER ARM REAR
6	10005	4	FITTING - GREASE (ZERK)
7	68610	2	SPACER - BUMP STOP
8	10611	2	STUD - 10MM X 1.00"
9	10141	2	BOLT - 5/8"-18 X 4.00" 12-POINT
10	10058-C	2	HIGH MISALIGNMENT SPACER: 1-5/8" CUSTOM
11	10058-4RN	2	TAPERED ADAPTER: LOWER A-ARM
12	12103	2	WASHER - 5/8" AN (GOLD ZINC)
13	11102	2	NUT - 5/8"-18 GRADE C-LOCK
14*	10025	2	BOLT - 1/2"-20 X 2.50" GRADE 8 (ZINC)
15*	12003	4	WASHER - 1/2" AN
16*	11001	2	NUT - 1/2"-20 NYLOCK (ZINC)
Pre-Installed	FK-WSSX16T-1	2	1" UNIBALL STAINLESS W/ PTFE LINER
Pre-Installed	30604	2	SNAP RING: 1" UNIBALL

* DUAL SHOCK APPLICATIONS ONLY

PROPRIETARY AND CONFIDENTIAL

THE INFORMATION CONTAINED IN THIS DRAWING IS THE SOLE PROPERTY OF TOTAL CHAOS FABRICATION. ANY REPRODUCTION IN PART OR AS A WHOLE WITHOUT THE WRITTEN PERMISSION OF TOTAL CHAOS FABRICATION IS PROHIBITED.

TOTAL CHAOS FABRICATION
159 N. MAPLE ST. UNIT J
CORONA, CA 92880
951.737.9682