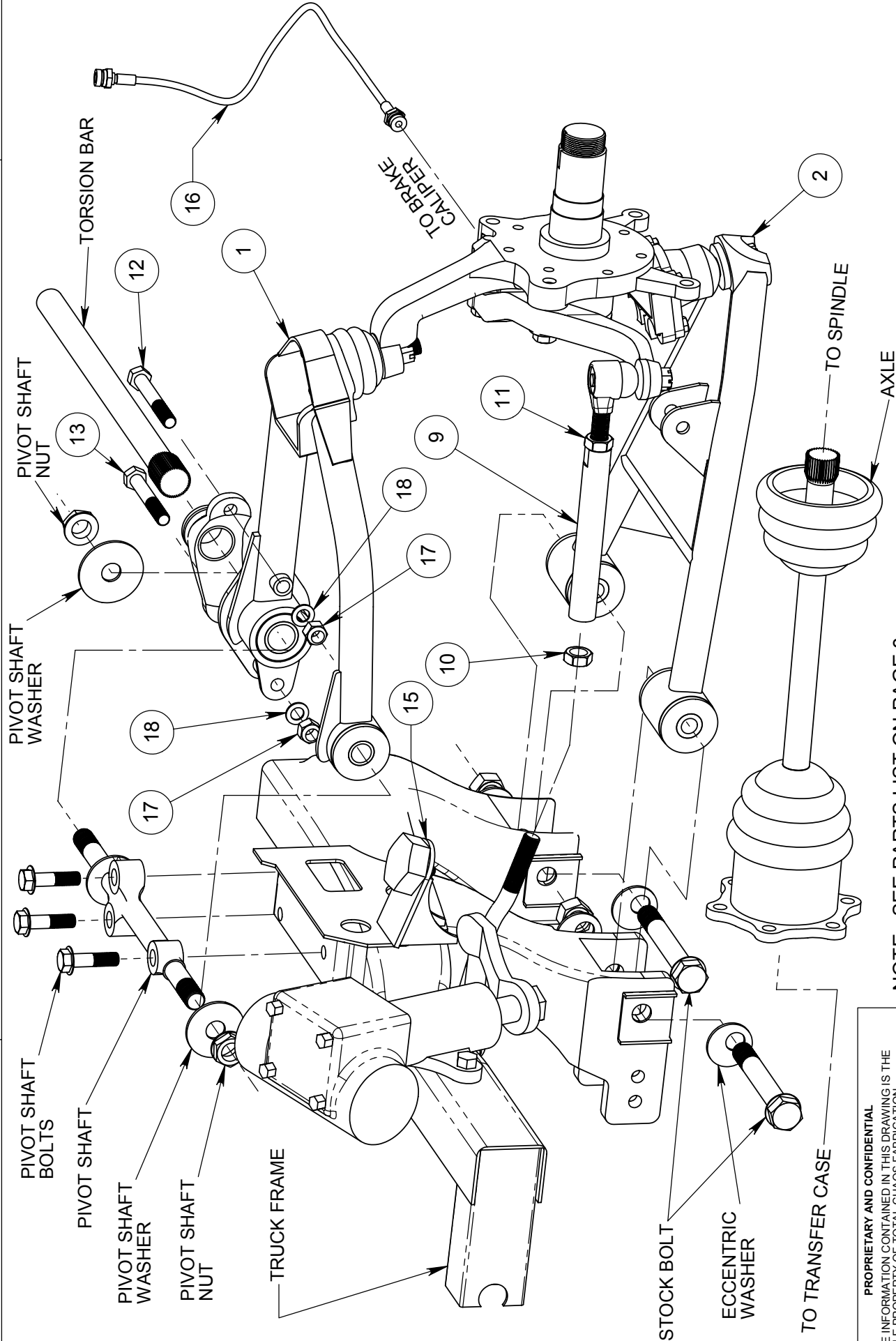




**INSTALLATION INSTRUCTIONS**  
**TOYOTA 4x4 "CADDY KIT" Part # TC95000**

DATE: 07.29.02  
SCALE: N/A  
PAGE: 2 OF 3  
DRAWN: EK



PROPRIETARY AND CONFIDENTIAL  
THE INFORMATION CONTAINED IN THIS DRAWING IS THE  
SOLE PROPERTY OF TOTAL CHAOS FABRICATION.  
ANY REPRODUCTION IN PART OR AS A WHOLE WITHOUT  
THE WRITTEN PERMISSION OF TOTAL CHAOS FABRICATION IS  
PROHIBITED.

NOTE: SEE PARTS LIST ON PAGE 3  
SOME ITEMS NOT SHOWN FOR CLARITY

## INSTALLATION INSTRUCTIONS TOYOTA 4x4 "CADDY KIT" Part # TC95000

### INSTALLATION NOTES:

The factory manual is required for torque specifications on all hardware. This procedure will involve the removal and reinstallation of many parts such as torsion bars, ball joints, tie rod ends, etc. This would be an opportunity to upgrade or replace any old parts. This suspension system was designed to use Sway Away torsion bars.

Some items not shown for clarity.

TOTAL CHAOS FABRICATION  
159 NORTH MAPLE ST. UNIT J  
CORONA CALIF. 92881

909.737.9682

<b>PARTS LIST: TOYOTA 4x4 "CADDY KIT" Part# TC95000</b>			
ITEM #	PART #	QTY.(PER KIT)	ITEM DESCRIPTION
1	TC90045	1	ARM-CADDY 4x4 UPPER LEFT A-
	TC90046	1	ARM-CADDY 4x4 UPPER RIGHT A-
2	TC90025	1	ARM-CADDY 4x4 LOWER LEFT A-
	TC90026	1	ARM-CADDY 4x4 LOWER RIGHT A-
3	TC45025	4	BUSHING,1.000x.750x.825L URETHANE
4	TC45020	6	BUSHING,1.000x.750x1.500L URETHANE
5	TC51300	4	BUSHING,1.00x.625x2.750L STEEL
6	TC51325	2	BUSHING,1.00x.775x1.815L STEEL
7	TC51339	2	BUSHING,1.3125x1.0625x2.900L STEEL
8	TC45050	2	BUSHING,2.100x1.3125x2.625 URETHANE
9	TC50065	2	EXTENSION,STEERING TIEROD 7" ADJUSTER
10	TC12567	2	NUT,17mm RIGHT HAND JAM
11	TC12577	2	NUT,17mm LEFT HAND JAM
12	TC10160	2	BOLT,1/2-20x3.75L-GRADE 8
13	TC10150	2	BOLT,1/2-20x3.50L-GRADE 8
14	TC50196	2	SOCKET, TOYOTA 4x4 HD TORSION
15	TC80026	2	BRACKET, BUMP STOP
	TC44600	2	STOP, URETHANE BUMP
	TC12506	2	NUT,3/8-16 NYLOCK GRADE 8
16	TC45860	2	LINE,23" EXTENDED BRAKE
17	TC12525	4	NUT,1/2-20 NYLOCK GRADE 8
18	TC12450	4	WASHER,AN960-616 1/2" FLAT