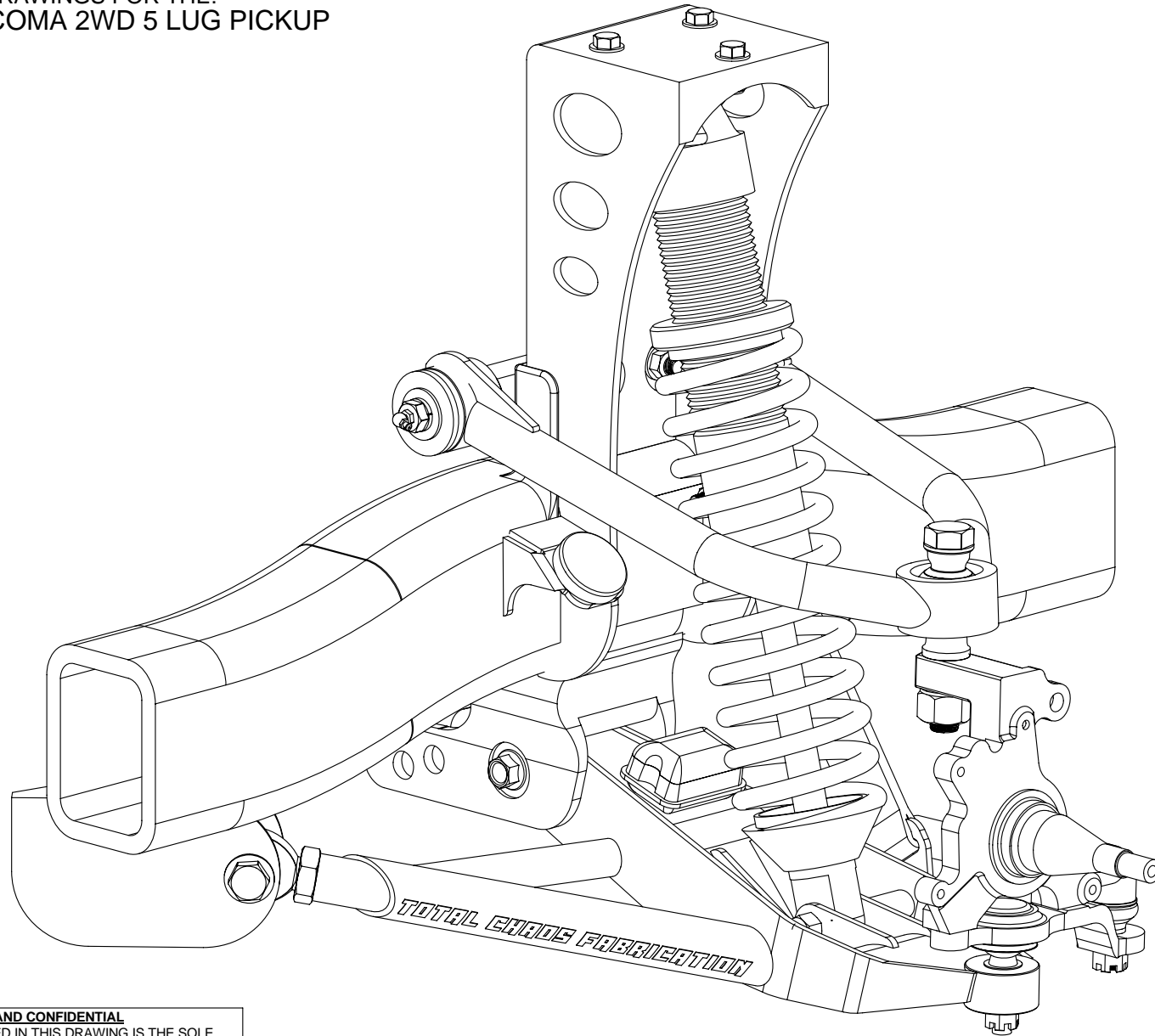


INSTALLATION DRAWINGS FOR THE:
1996-2004 TACOMA 2WD 5 LUG PICKUP



PROPRIETARY AND CONFIDENTIAL

THE INFORMATION CONTAINED IN THIS DRAWING IS THE SOLE PROPERTY OF TOTAL CHAOS FABRICATION. ANY REPRODUCTION IN PART OR AS A WHOLE WITHOUT THE WRITTEN PERMISSION OF TOTAL CHAOS FABRICATION IS PROHIBITED.

COILOVER SHOCK BUCKET

WITH A RECIPROCATING SAW, CUT THE STOCK COIL BUCKET BETWEEN THE UPPER A-ARM MOUNTING NUTS AND THE START OF THE BEND.

34

DO NOT WELD AROUND UPPER A-ARM MOUNTING NUTS.

WELD CENTER HOLE IN FRONT

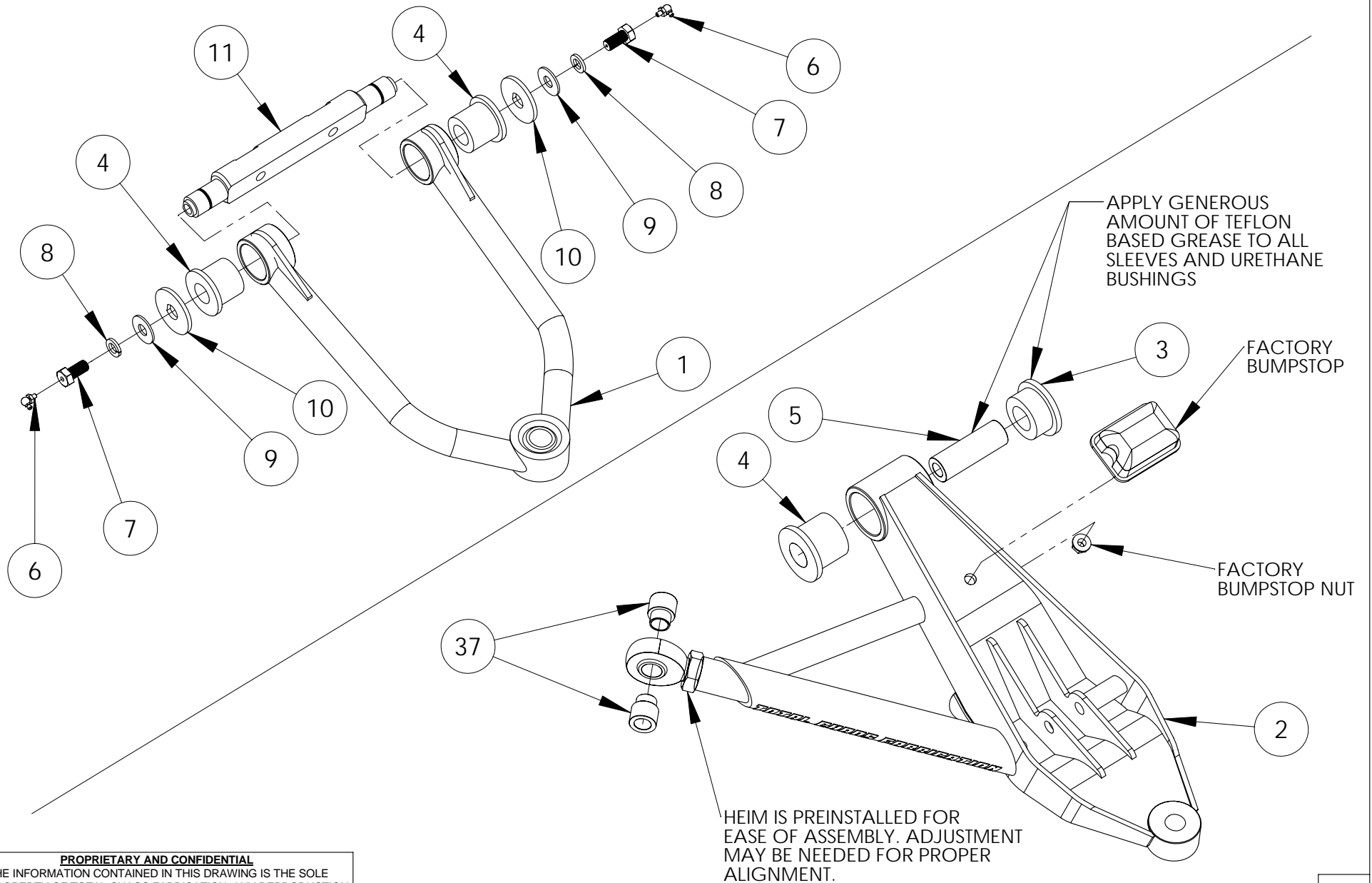
DROOP STOP

WELD COIL BUCKET FULLY AROUND BACKSIDE, ACROSS FRONT & DOWN BOTH SIDES OF LEGS.

31

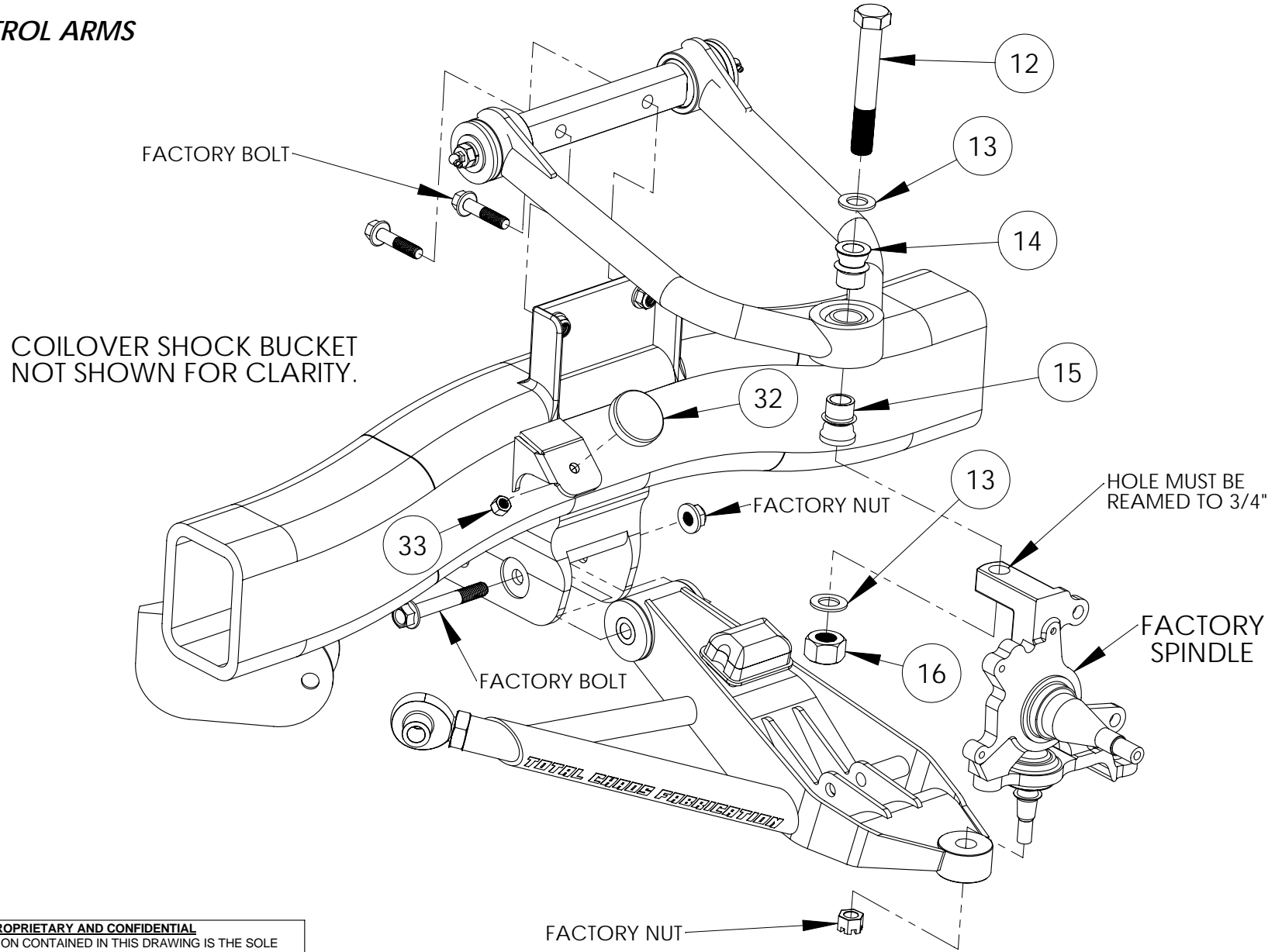
****SEE NOTES ON PAGE 6****

PROPRIETARY AND CONFIDENTIAL
THE INFORMATION CONTAINED IN THIS DRAWING IS THE SOLE PROPERTY OF TOTAL CHAOS FABRICATION. ANY REPRODUCTION IN PART OR AS A WHOLE WITHOUT THE WRITTEN PERMISSION OF TOTAL CHAOS FABRICATION IS PROHIBITED.



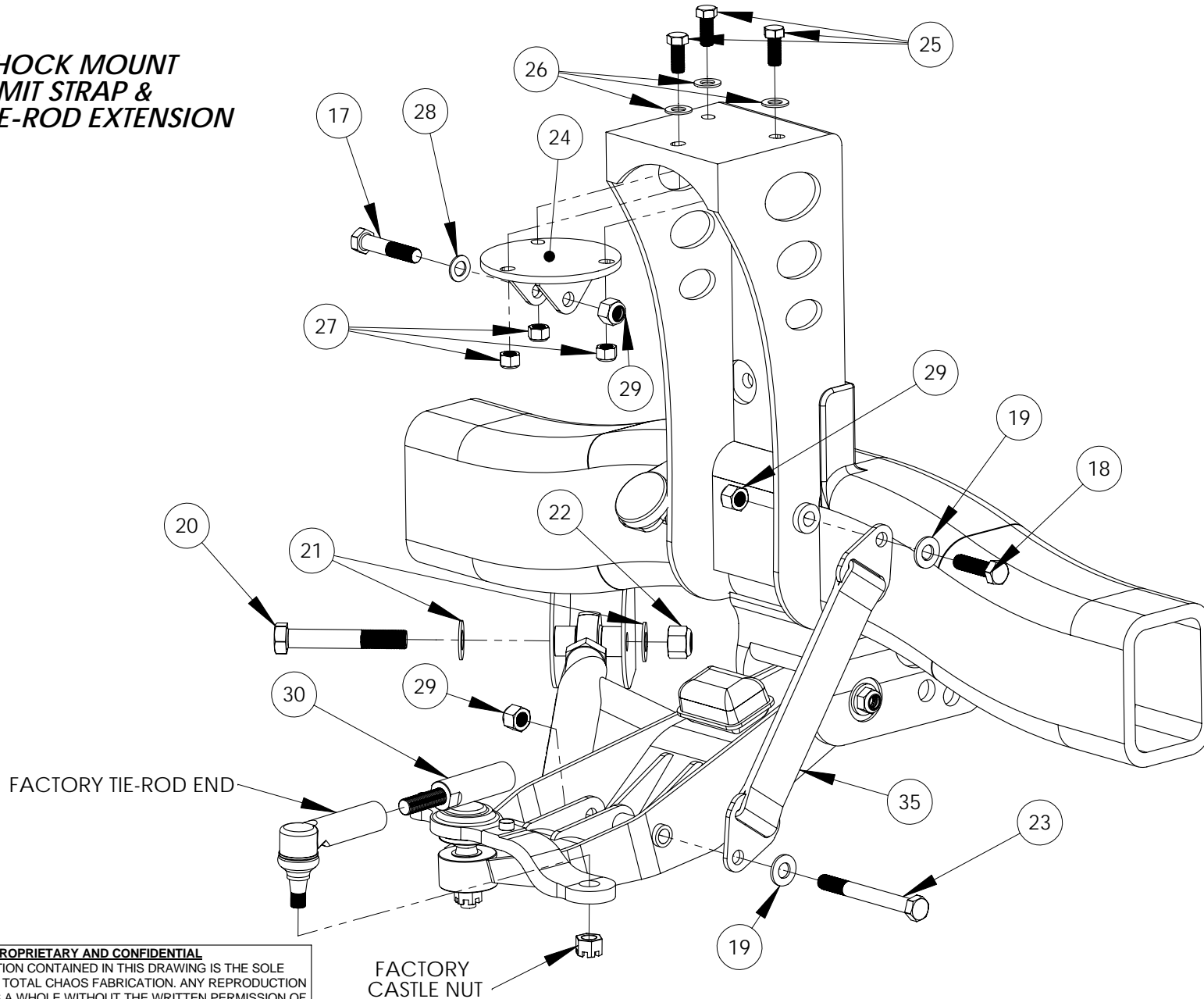
PROPRIETARY AND CONFIDENTIAL
THE INFORMATION CONTAINED IN THIS DRAWING IS THE SOLE PROPERTY OF TOTAL CHAOS FABRICATION. ANY REPRODUCTION IN PART OR AS A WHOLE WITHOUT THE WRITTEN PERMISSION OF TOTAL CHAOS FABRICATION IS PROHIBITED.

CONTROL ARMS



PROPRIETARY AND CONFIDENTIAL
THE INFORMATION CONTAINED IN THIS DRAWING IS THE SOLE PROPERTY OF TOTAL CHAOS FABRICATION. ANY REPRODUCTION IN PART OR AS A WHOLE WITHOUT THE WRITTEN PERMISSION OF TOTAL CHAOS FABRICATION IS PROHIBITED.

**SHOCK MOUNT
LIMIT STRAP &
TIE-ROD EXTENSION**



PROPRIETARY AND CONFIDENTIAL
THE INFORMATION CONTAINED IN THIS DRAWING IS THE SOLE PROPERTY OF TOTAL CHAOS FABRICATION. ANY REPRODUCTION IN PART OR AS A WHOLE WITHOUT THE WRITTEN PERMISSION OF TOTAL CHAOS FABRICATION IS PROHIBITED.

INSTALLATION NOTES

The factory manual is required for torque specifications on all hardware. This procedure will involve the removal and re-installation of many parts. Always use factory replacements for worn or damaged parts. Always use new cotter keys during re-installation.

Page 2

After the coil bucket has been installed, position the droop stop bracket (Item #31) so it will limit the upper a-arm's down travel. Placement will vary. Tack weld into position and check to see that the upper a-arm makes contact before welding. Failure to do so can overtravel the lower balljoint and may cause it to break.

After installation is complete (shocks installed), adjust limit strap so that there is a 1/4" gap between the high misalignment spacer and the uniball cup on the upper control arm (see model below). Limit straps will stretch over time and will need to be adjusted periodically to prevent damage to shocks and uniball components.

Page 3

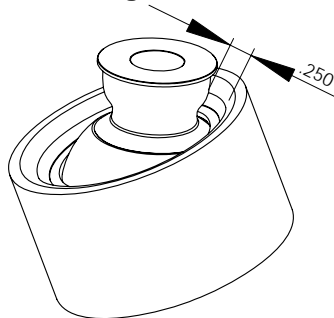
Apply generous amounts of teflon based grease on items all sleeves and urethane bushings. Use grease gun to grease upper control arm bushings.

Page 4

Torque item #12 to 100ft/lbs.

Page 5

To install new extended brake line (not shown), attach banjo end to caliper using a crush washer on both sides of the fitting. To attach brake line on frame side, remove factory hard line from bracket next to the rear pivot of lower arm. Remove other end of hard line from tee, mounted on top of frame next to upper control arm. The new brake line and adapter will connect directly to this tee. First install the adapter fitting to the tee fitting, **DO NOT OVER TIGHTEN**, then thread 90 degree end of brake line onto adapter and tighten both. Bleed brakes and check all connections for any leaks.



A wheel alignment is required after installation to return suspension geometry to factory specifications.

Inspect all components and re-torque all hardware within 500 miles.

PARTS LIST: 96-04 TACOMA 5LUG 2WD LONG TRAVEL

ITEM #	PART #	QTY.	ITEM DESCRIPTION
1	99801R	1	CONTROL ARM, 96-04 TACOMA UPPER RIGHT
	99801L	1	CONTROL ARM, 96-04 TACOMA UPPER LEFT
2	99802R	1	CONTROL ARM, 96-04 TACOMA LOWER RIGHT
	99802L	1	CONTROL ARM, 96-04 TACOMA LOWER LEFT
3	60684	2	BUSHING, 1.00x 1.75x .825L URETHANE
4	60292	6	BUSHING, 1.00x 1.75x 1.50L URETHANE
5	69802	2	SLEEVE, 1.00x STEEL
6	10005	4	ZERK FITTING, 1/4"-28 90 DEGREE
7	10010	4	BOLT, 1/2-20 X 1.00L GRADE 8 GUN-DRILLED
8	12006	4	WASHER, 1/2" LOCK
9	12007	4	WASHER, 1/2" USS
10	69205	4	WASHER, KEYED CROSS SHAFT
11	69842	2	BILLET CROSS SHAFT
12	10350	2	BOLT, 3/4" -16 X 5.00L F911
13	12303	4	WASHER, 3/4" AN
14	100916TCF	2	SPACER, 1.00 X 0.563 MISALIGNMENT
15	10034TCF	2	SPACER, 1.00 X 0.750 MISALIGNMENT
16	11302	2	NUT, 3/4" C-LOCK
17	10025	2	BOLT, 1/2" -20 X 2.50L GRADE 8
18	10017	2	BOLT, 1/2" -20 X 1.75L GRADE 8
19	12004	4	WASHER, 1/2" SAE
20	10140	2	BOLT, 5/8" X 4.00L GRADE 8
21	12103	4	WASHER, 5/8" AN
22	11101	2	NUT, 5/8" NYLOCK
23	10045	2	BOLT, 1/2" -20 X 4.50L GRADE 8
24	59820S	2	SHOCK CIRCLE, SWAY A WAY
	59821K	2	SHOCK CIRCLE, FOX/KING
25	10510	6	BOLT, 7/16" -20 X 1.00L GRADE 8
26	12504	6	WASHER, 7/16" SAE
27	11501	6	NUT, 7/16" NYLOCK
28	12003	2	WASHER, 1/2" AN
29	11001	6	NUT, 1/2" NYLOCK
30	99015	2	EXTENSION, 15MM TIE-ROD
31	59207	2	BRACKET, WELD-ON DROOP STOP
32	60235	2	BUMP STOP, 11/16" THICK URETHANE
33	11010	2	NUT, 3/8" -16 NYLOCK
34	99803R	1	BUCKET, COILOVER SHOCK RH
	99803L	1	BUCKET, COILOVER SHOCK LH
35	69617	2	STRAP, 12" LIMIT
36	98330	2	LINE, EXTENDED BRAKE
37	99858	4	SPACER, 3/4" X 5/8"
38	97330	2	HEIM JOINT, 3/4" X 7/8" RH TEFLON LINED
39	33301	2	JAM NUT, 7/8" RH

TOTAL CHAOS Fabrication Inc.
159 North Maple St. Unit J
Corona, CA 92880
951.737.9682
WWW.CHAOSFAB.COM

PROPRIETARY AND CONFIDENTIAL
THE INFORMATION CONTAINED IN THIS DRAWING IS THE SOLE PROPERTY OF TOTAL CHAOS FABRICATION. ANY REPRODUCTION IN PART OR AS A WHOLE WITHOUT THE WRITTEN PERMISSION OF TOTAL CHAOS FABRICATION IS PROHIBITED.