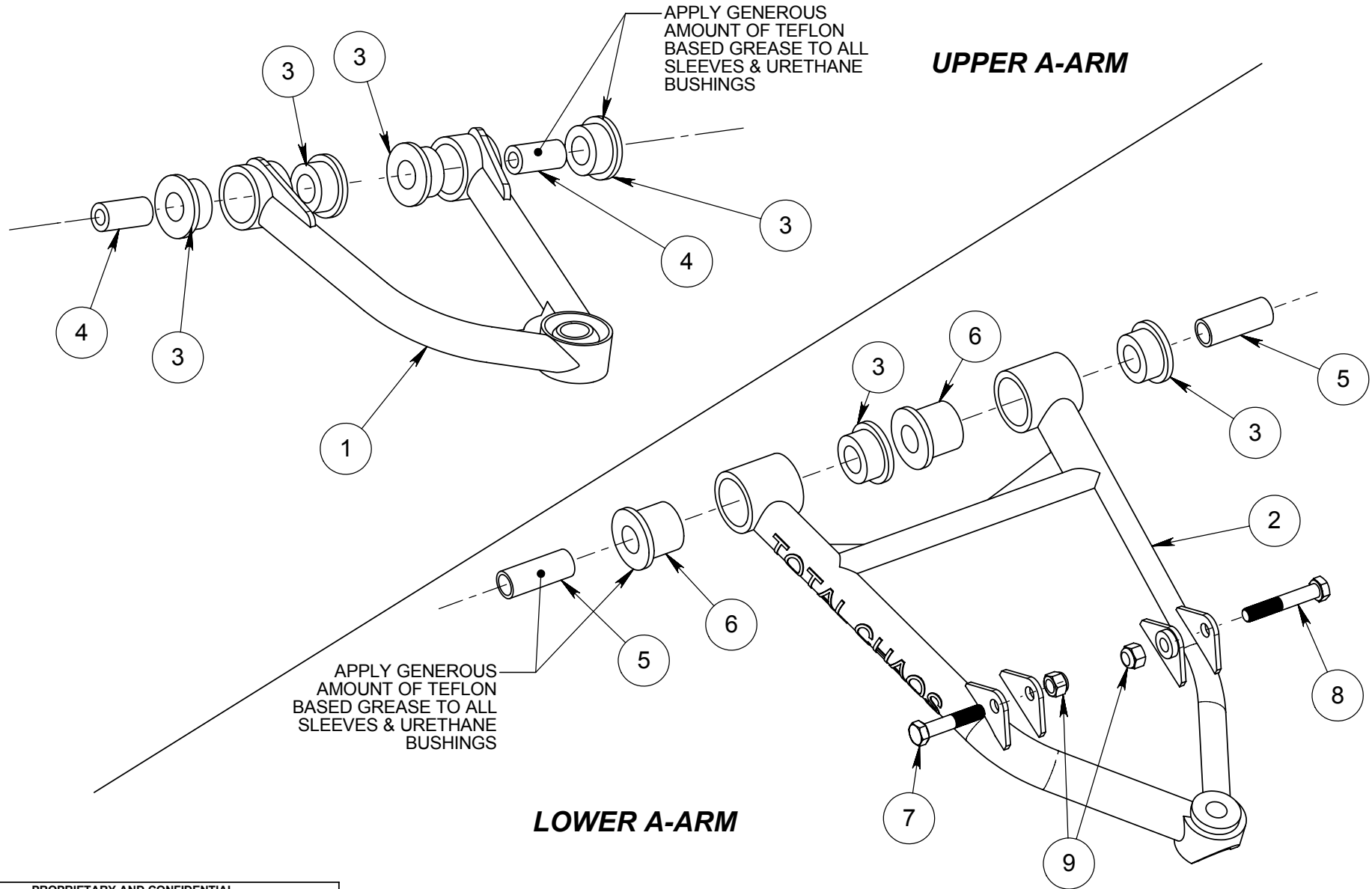


PROPRIETARY AND CONFIDENTIAL

THE INFORMATION CONTAINED IN THIS DRAWING IS THE SOLE PROPERTY OF TOTAL CHAOS FABRICATION. ANY REPRODUCTION IN PART OR AS A WHOLE WITHOUT THE WRITTEN PERMISSION OF TOTAL CHAOS FABRICATION IS PROHIBITED.

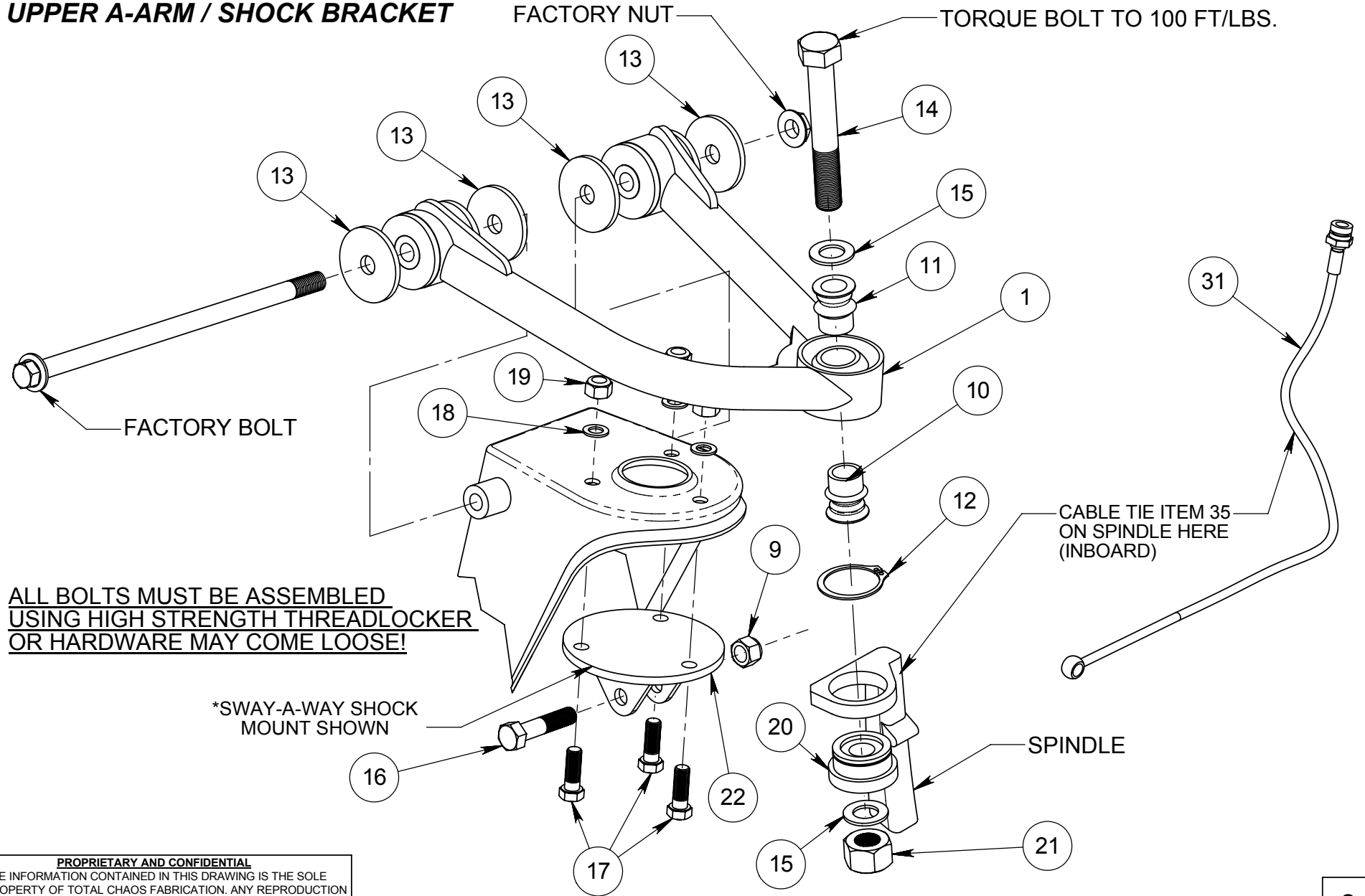
*LEFT SIDE OF TRUCK SHOWN. SOME ITEMS NOT SHOWN FOR CLARITY.



PROPRIETARY AND CONFIDENTIAL
THE INFORMATION CONTAINED IN THIS DRAWING IS THE SOLE PROPERTY OF TOTAL CHAOS FABRICATION. ANY REPRODUCTION IN PART OR AS A WHOLE WITHOUT THE WRITTEN PERMISSION OF TOTAL CHAOS FABRICATION IS PROHIBITED.

*LEFT SIDE OF TRUCK SHOWN. SOME ITEMS NOT SHOWN FOR CLARITY.

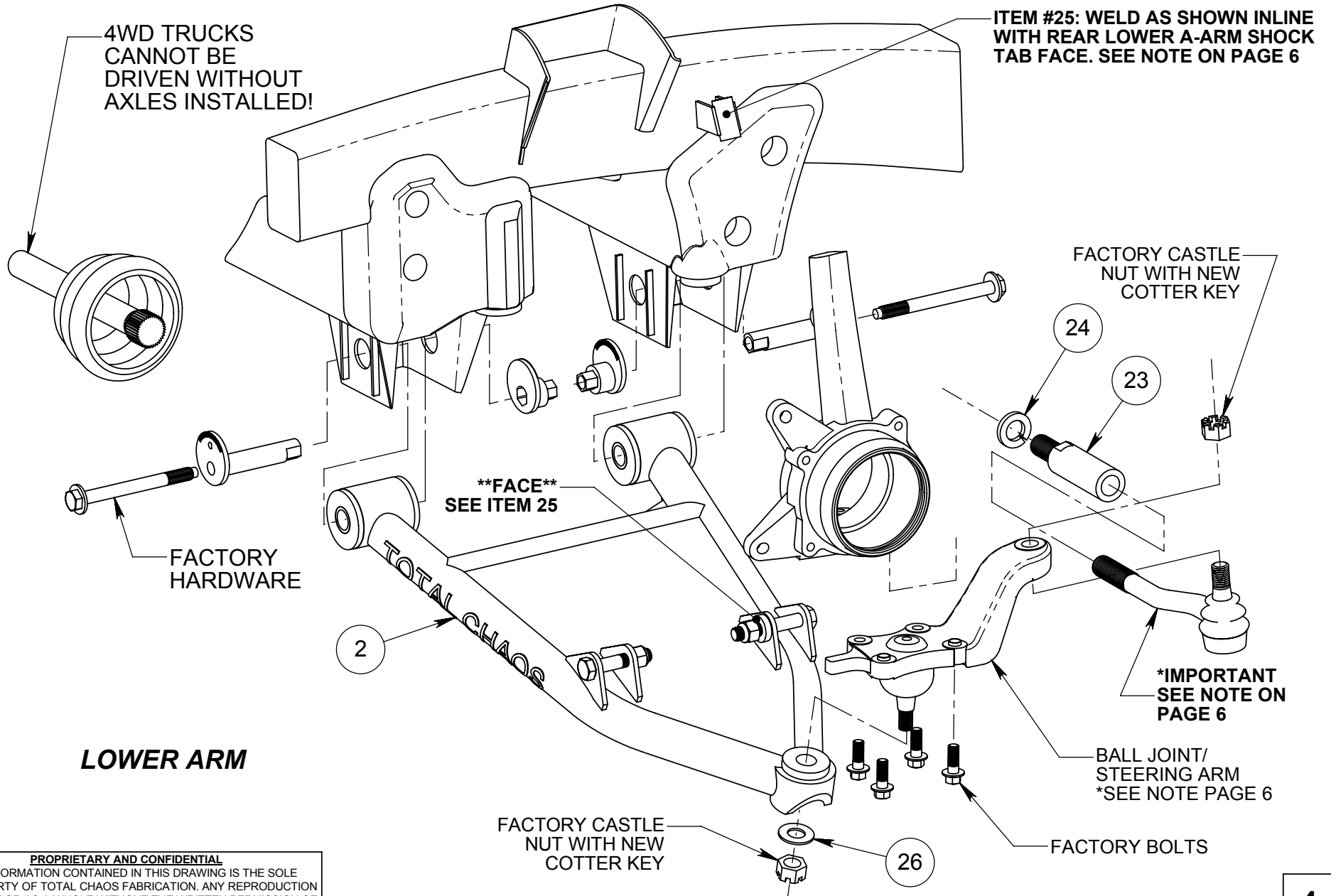
UPPER A-ARM / SHOCK BRACKET



**ALL BOLTS MUST BE ASSEMBLED
USING HIGH STRENGTH THREADLOCKER
OR HARDWARE MAY COME LOOSE!**

PROPRIETARY AND CONFIDENTIAL
THE INFORMATION CONTAINED IN THIS DRAWING IS THE SOLE
PROPERTY OF TOTAL CHAOS FABRICATION. ANY REPRODUCTION
IN PART OR AS A WHOLE WITHOUT THE WRITTEN PERMISSION OF
TOTAL CHAOS FABRICATION IS PROHIBITED.

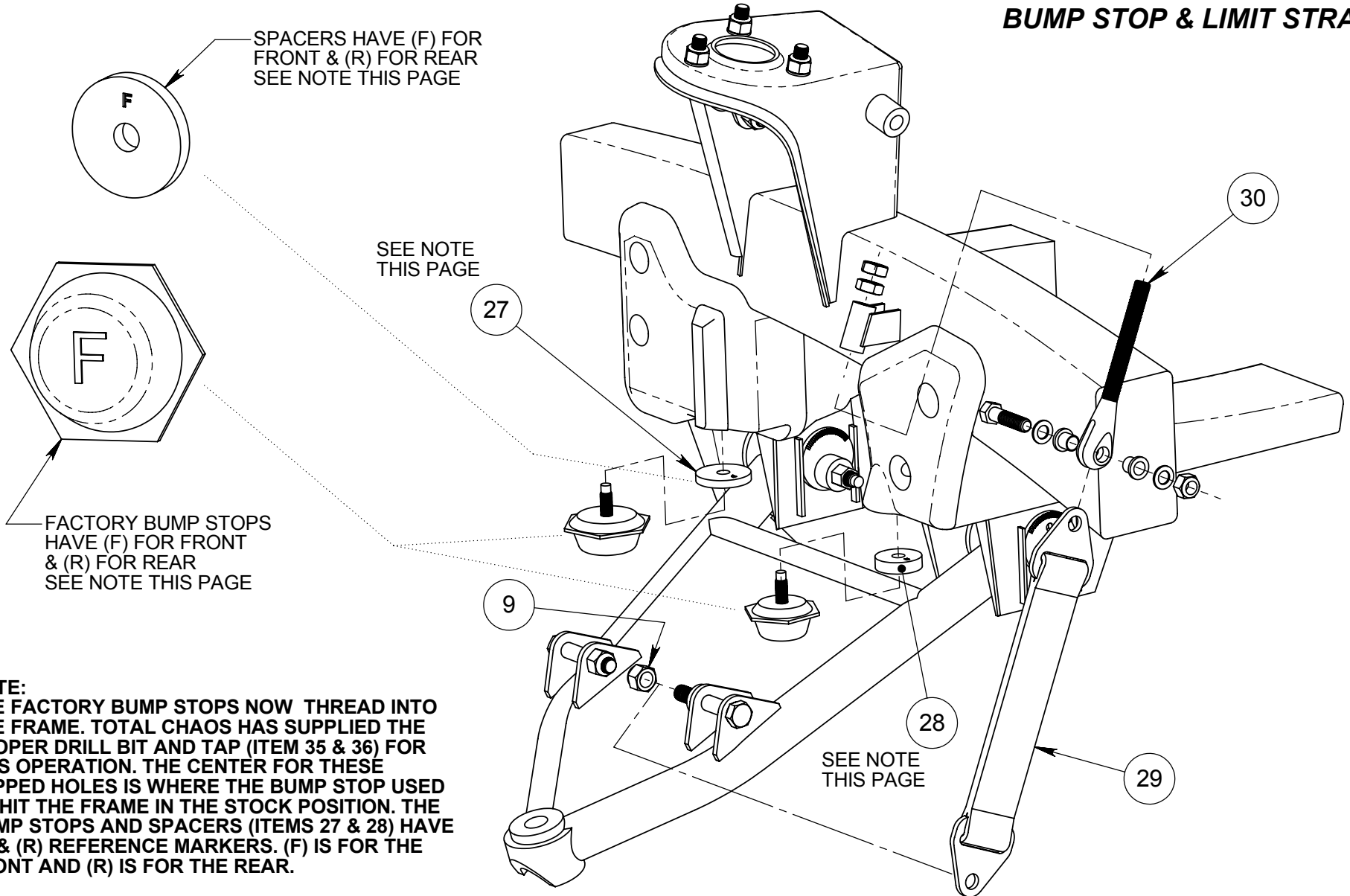
***LEFT SIDE OF TRUCK SHOWN. SOME ITEMS NOT SHOWN FOR CLARITY.**



PROPRIETARY AND CONFIDENTIAL
 THE INFORMATION CONTAINED IN THIS DRAWING IS THE SOLE PROPERTY OF TOTAL CHAOS FABRICATION. ANY REPRODUCTION IN PART OR AS A WHOLE WITHOUT THE WRITTEN PERMISSION OF TOTAL CHAOS FABRICATION IS PROHIBITED.

*LEFT SIDE OF TRUCK SHOWN. SOME ITEMS NOT SHOWN FOR CLARITY.

BUMP STOP & LIMIT STRAP



NOTE:
 THE FACTORY BUMP STOPS NOW THREAD INTO THE FRAME. TOTAL CHAOS HAS SUPPLIED THE PROPER DRILL BIT AND TAP (ITEM 35 & 36) FOR THIS OPERATION. THE CENTER FOR THESE TAPPED HOLES IS WHERE THE BUMP STOP USED TO HIT THE FRAME IN THE STOCK POSITION. THE BUMP STOPS AND SPACERS (ITEMS 27 & 28) HAVE (F) & (R) REFERENCE MARKERS. (F) IS FOR THE FRONT AND (R) IS FOR THE REAR.

PROPRIETARY AND CONFIDENTIAL

THE INFORMATION CONTAINED IN THIS DRAWING IS THE SOLE PROPERTY OF TOTAL CHAOS FABRICATION. ANY REPRODUCTION IN PART OR AS A WHOLE WITHOUT THE WRITTEN PERMISSION OF TOTAL CHAOS FABRICATION IS PROHIBITED.

*LEFT SIDE OF TRUCK SHOWN. SOME ITEMS NOT SHOWN FOR CLARITY.

INSTALLATION NOTES

The factory manual is required for torque specifications on all hardware. This procedure will involve the removal and re-installation of many parts. Always use replacement factory parts for any worn or damaged parts. Always use new cotter keys for reinstallation.

Some items are not shown for clarity.

Page 2

Apply generous amounts of teflon based grease on items 4 & 5.

Page 3

(Tacoma Truck ONLY, Not 4Runner) Item 35, brake line needs to be attached with a cable tie on the inboard side of the spindle.

Page 4

(Tacoma Truck ONLY, Not 4Runner) Tacoma "crooked" tierods are switched from right to left and left to right. Use the right tierod on the left side of truck. Item 25, Weld bracket as shown. Grind frame to bare metal and weld.

Page 5

See notes on same page.

*****IMPORTANT INFORMATION*****

1. 4WD TRUCKS CANNOT BE DRIVEN WITHOUT AXLES INSTALLED! Wheel bearings will fail causing serious damage and/or injury.

2. Grind off the steering stop on lower balljoints.

Total Chaos Fabrication Inc
159 North Maple St. Unit J
Corona, CA 92880
951.737.9682

WWW.CHAOSFAB.COM

PARTS LIST: TOYOTA "TACO KIT" Part# TC96000

ITEM #	PART #	QTY. (PER KIT)	ITEM DESCRIPTION
1	99601R	1	CONTROL ARM, TACOMA UPPER RIGHT
	99601L	1	CONTROL ARM, TACOMA UPPER LEFT
2	99602R	1	CONTROL ARM, TACOMA LOWER RIGHT
	99602L	1	CONTROL ARM, TACOMA LOWER LEFT
3	60684	12	BUSHING, 1.00 x 1.75 x .825L URETHANE
4	69601	4	SLEEVE, 1.00 x .55 x 1.96L STEEL
5	69602	4	SLEEVE, 1.00 x .75 x 2.63L STEEL
6	60292	4	BUSHING, 1.00 x 1.75 x 1.50L URETHANE
7	10025	2	BOLT, 1/2-20x2.50L GRADE 8
8	10030	2	BOLT, 1/2-20x3.00L GRADE 8
9	11001	6	NUT, 1/2-20 NYLOCK GRADE 8
10	10034T	2	SPACER, 1.00" x 0.75" HI-MISALIGN, TALL
11	10034TCF	2	SPACER, 1.00" x 0.75" HI-MISALIGN, SHORT
12	69615	2	CLIP, EXTERNAL RETAINING, SLUG ADAPTER
13	69620	8	WASHER, 2.25 x .563 x .1875 STEEL, ZINC
14	10350	2	BOLT, 3/4 -16x5.00L -GRADE F911
15	12303	4	WASHER, AN960-1216 3/4" AN
16	10025	2	BOLT, 1/2-20x2.50L -GRADE 8 SAW SHOCK
	10045	2	BOLT, 1/2-20X4.25L SOCKET HEAD, FOX/KING
17	10515	6	BOLT, 7/16-20x1.50L -GRADE 8
18	12504	6	WASHER, AN960-1216 7/16" SAE
19	11501	6	NUT, 7/16-20 NYLOCK GRADE 8
20	69616	2	SLUG, UNIBALL ADAPTER
21	11302	2	NUT, 3/4-16 GRADE C LOCK
22	59721K	2	SHOCK CIRCLE, FOX/KING TACO & 4RUNNER
	59620S	2	SHOCK CIRCLE, SWAY A WAY, TACO
	59720S	2	SHOCK CIRCLE, SWAY A WAY, 4RUNNER
23	99020	2	EXTENSION, STEERING 20MM
24	12020	2	WASHER, 20MM GRADE 8 LOCK
25	69619	2	BRACKET, LIMIT STRAP ADJUSTER, WELD ON
26	12104	2	WASHER, 5/8 SAE
27	69610	2	SPACER, TACO FRONT BUMPSTOP
28	69612	2	SPACER, TACO REAR BUMPSTOP
29	69617	2	STRAP, 12" LIMIT, TRIPLE LAYER
30	69618	2	CLEVIS, LIMIT STRAP ADJUSTER
31	96330	2	LINE, 24" EXTENDED BRAKE, TACO
	97330	2	LINE, 15" EXTENDED BRAKE, 4RUNNER
32	69613	1	DRILL BIT, 5/16
33	69614	1	TAP, 10x 1.25 HAND

PROPRIETARY AND CONFIDENTIAL

THE INFORMATION CONTAINED IN THIS DRAWING IS THE SOLE PROPERTY OF TOTAL CHAOS FABRICATION. ANY REPRODUCTION IN PART OR AS A WHOLE WITHOUT THE WRITTEN PERMISSION OF TOTAL CHAOS FABRICATION IS PROHIBITED.