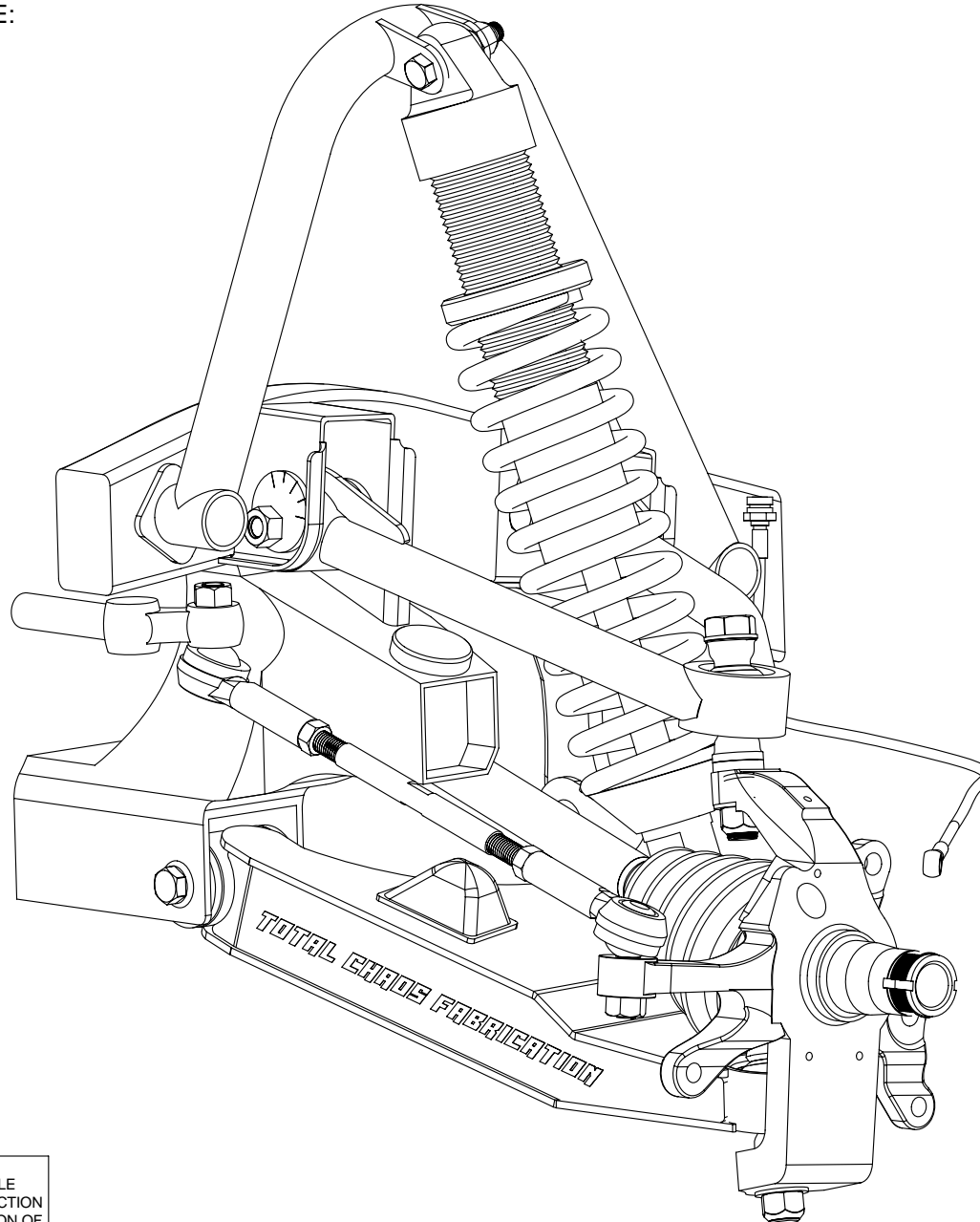


INSTALLATION DRAWINGS FOR THE:  
1998-2004 FRONTIER 4WD  
2000-2004 XTERRA 4WD

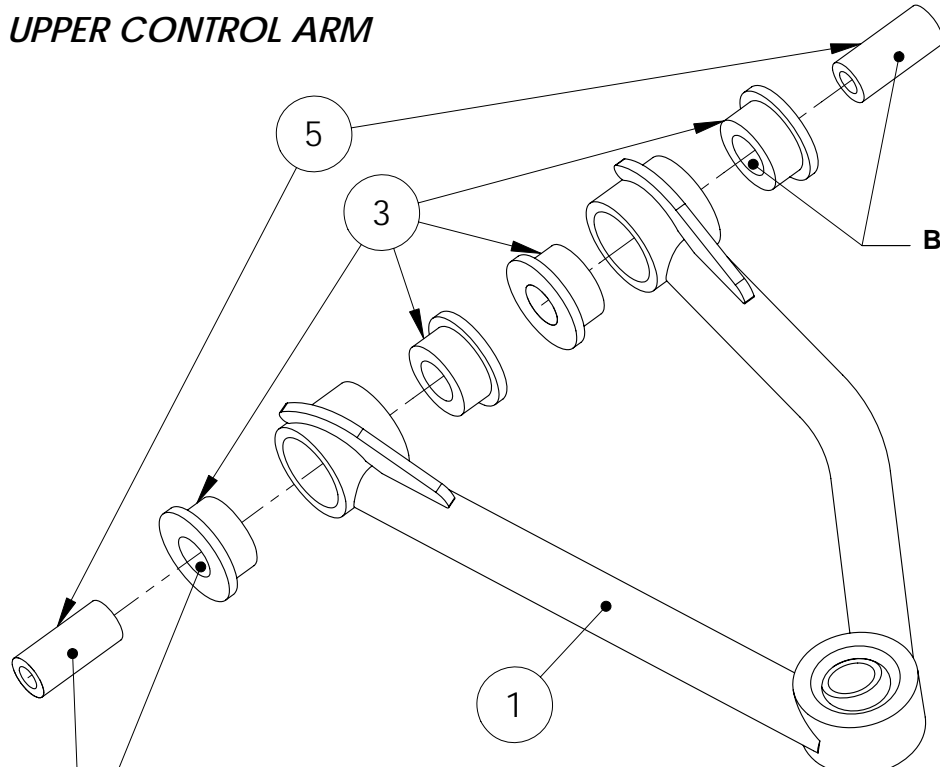


**PROPRIETARY AND CONFIDENTIAL**

THE INFORMATION CONTAINED IN THIS DRAWING IS THE SOLE PROPERTY OF TOTAL CHAOS FABRICATION. ANY REPRODUCTION IN PART OR AS A WHOLE WITHOUT THE WRITTEN PERMISSION OF TOTAL CHAOS FABRICATION IS PROHIBITED.

LEFT SIDE OF TRUCK SHOWN. SOME ITEMS NOT SHOWN FOR CLARITY.

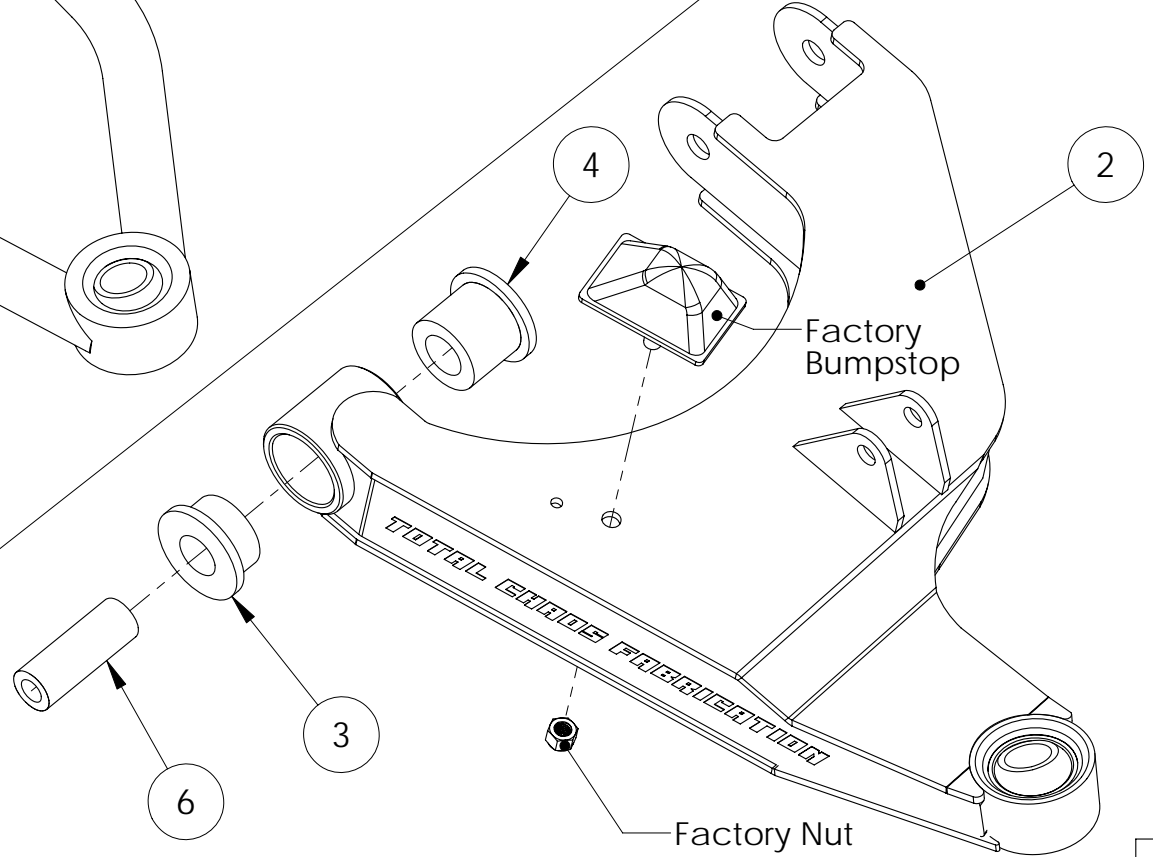
### UPPER CONTROL ARM



APPLY GENEROUS AMOUNTS OF TEFLON BASED GREASE TO OUTSIDE OF SLEEVES AND I.D. OF URETHANE BUSHINGS

APPLY GENEROUS AMOUNTS OF TEFLON BASED GREASE TO OUTSIDE OF SLEEVES AND I.D. OF URETHANE BUSHINGS

### LOWER CONTROL ARM



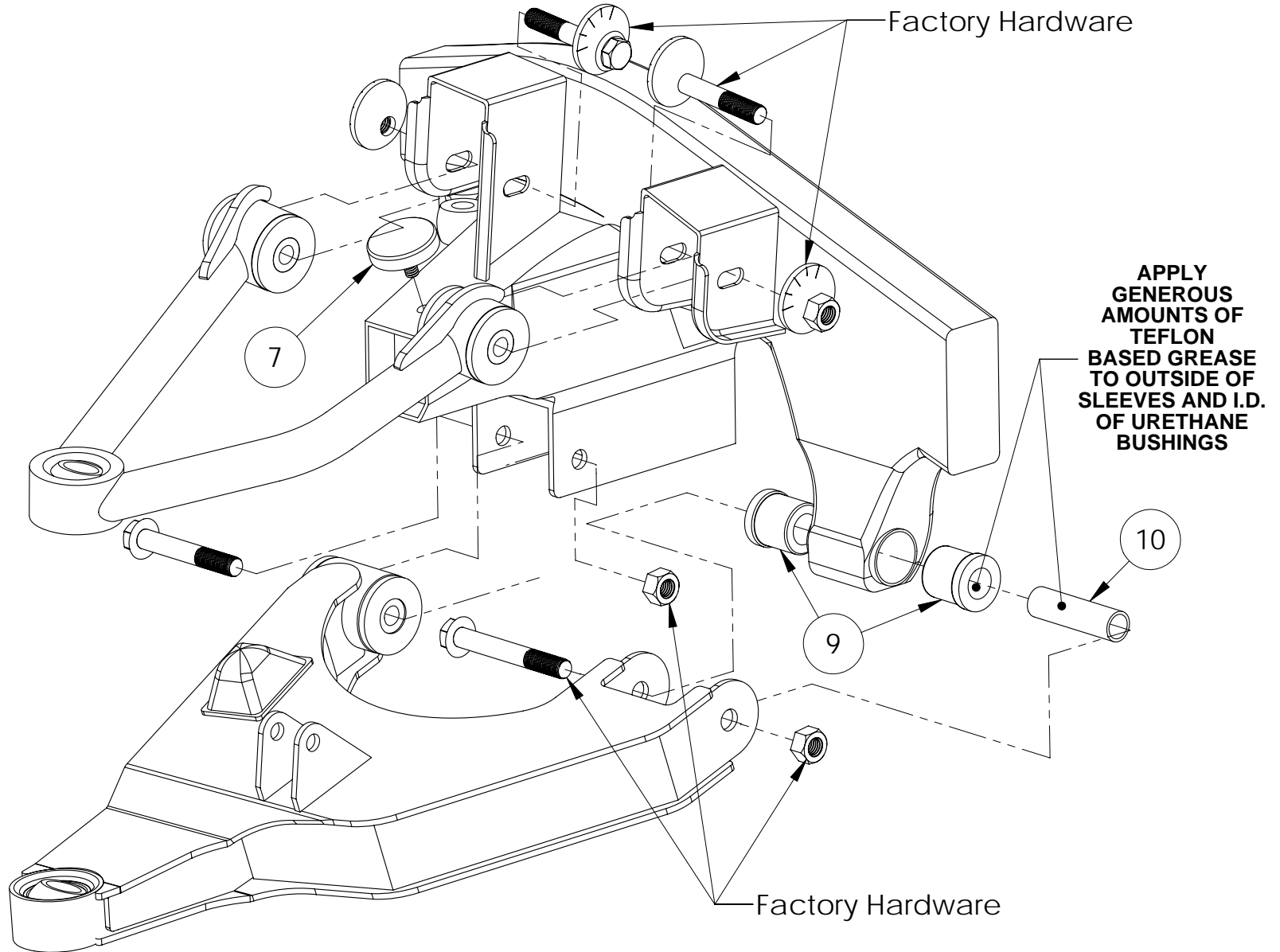
Factory Bumpstop

Factory Nut

**PROPRIETARY AND CONFIDENTIAL**

THE INFORMATION CONTAINED IN THIS DRAWING IS THE SOLE PROPERTY OF TOTAL CHAOS FABRICATION. ANY REPRODUCTION IN PART OR AS A WHOLE WITHOUT THE WRITTEN PERMISSION OF TOTAL CHAOS FABRICATION IS PROHIBITED.

LEFT SIDE OF TRUCK SHOWN. SOME ITEMS NOT SHOWN FOR CLARITY.

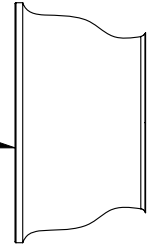


**PROPRIETARY AND CONFIDENTIAL**  
THE INFORMATION CONTAINED IN THIS DRAWING IS THE SOLE PROPERTY OF TOTAL CHAOS FABRICATION. ANY REPRODUCTION IN PART OR AS A WHOLE WITHOUT THE WRITTEN PERMISSION OF TOTAL CHAOS FABRICATION IS PROHIBITED.

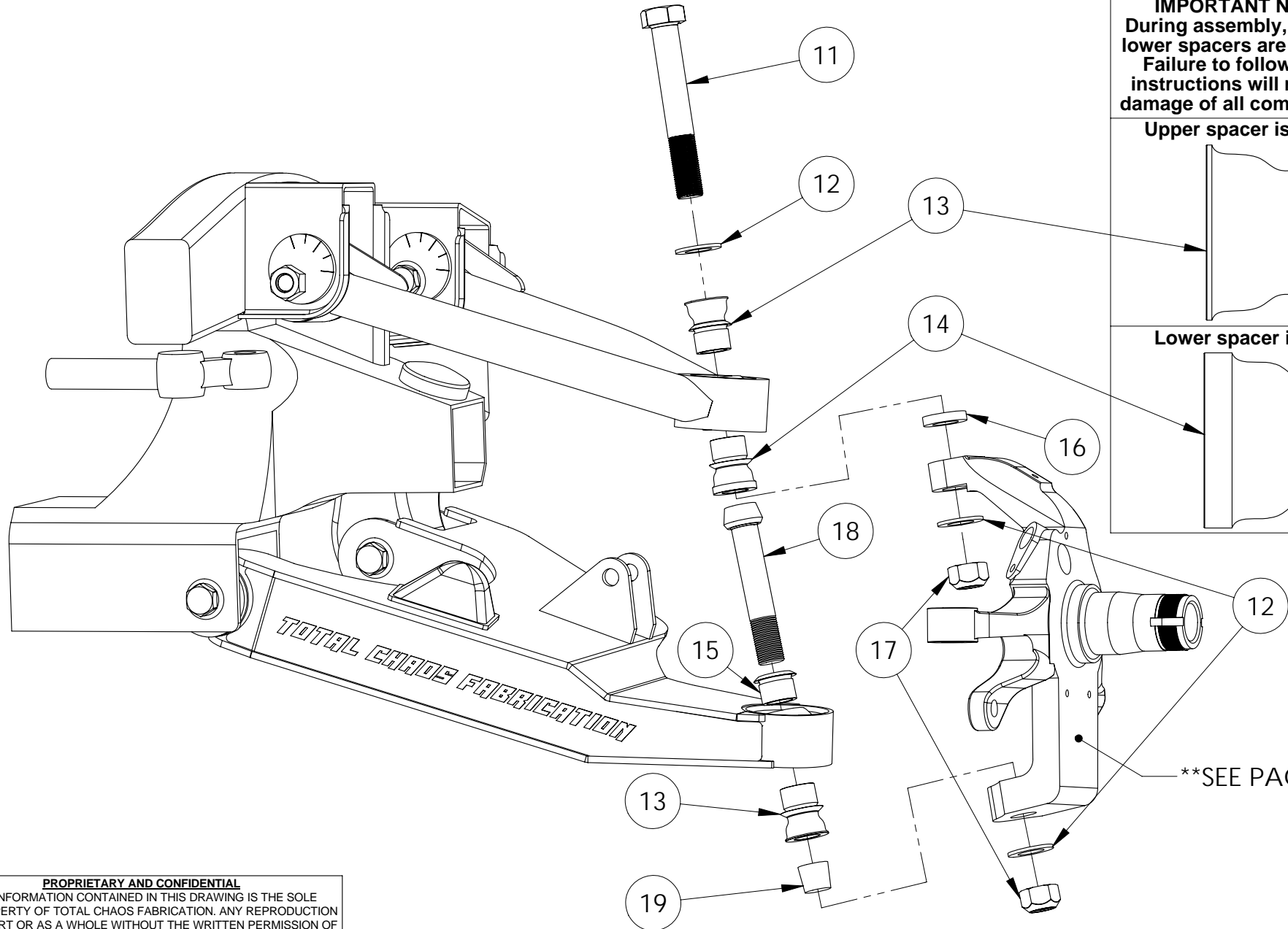
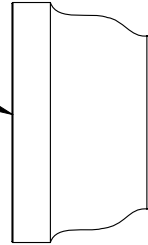
LEFT SIDE OF TRUCK SHOWN. SOME ITEMS NOT SHOWN FOR CLARITY.

**IMPORTANT NOTE:**  
 During assembly, upper & lower spacers are specific. Failure to follow these instructions will result in damage of all components.

Upper spacer is shorter



Lower spacer is taller



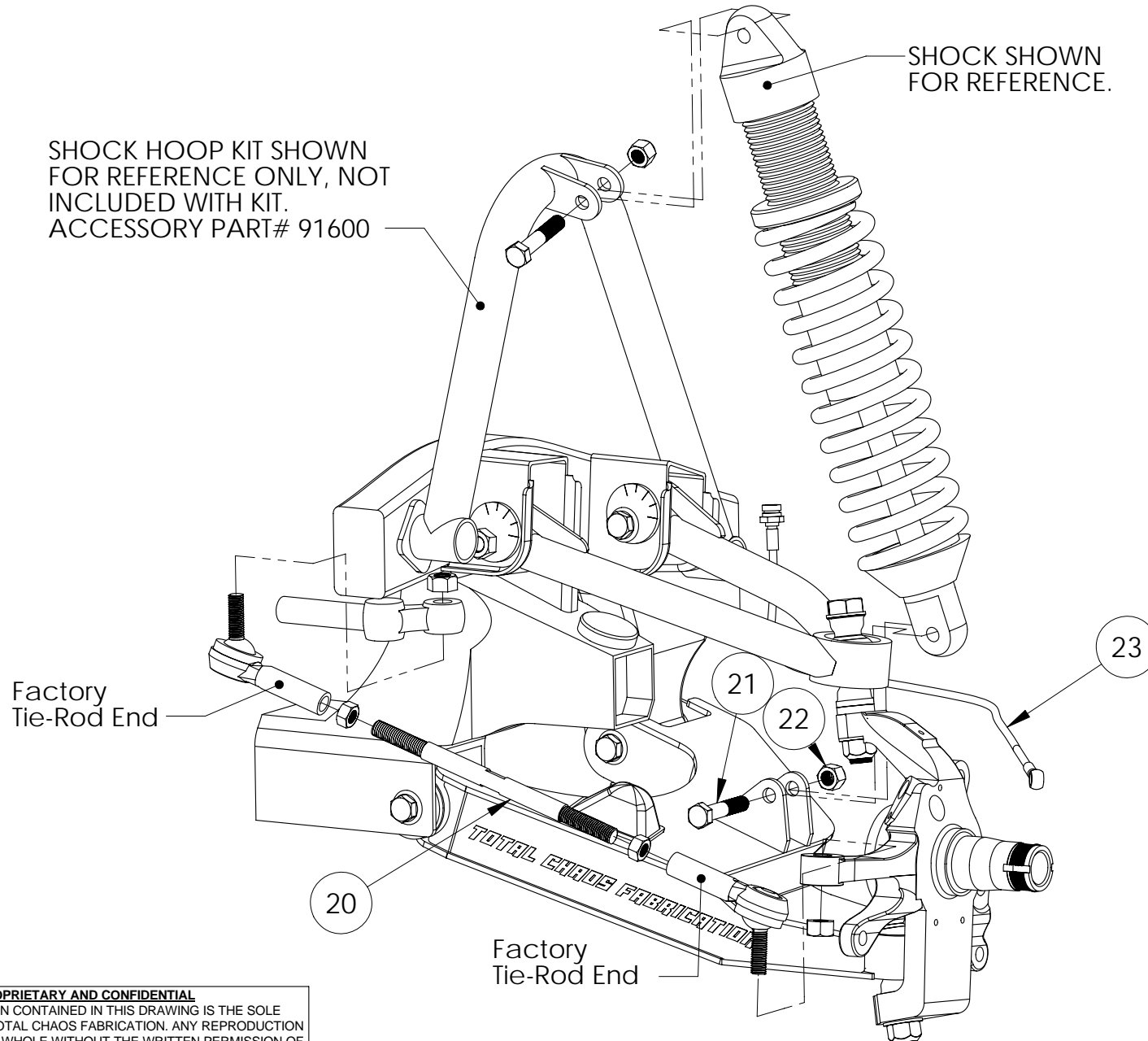
\*\*SEE PAGE 6

**PROPRIETARY AND CONFIDENTIAL**  
 THE INFORMATION CONTAINED IN THIS DRAWING IS THE SOLE PROPERTY OF TOTAL CHAOS FABRICATION. ANY REPRODUCTION IN PART OR AS A WHOLE WITHOUT THE WRITTEN PERMISSION OF TOTAL CHAOS FABRICATION IS PROHIBITED.

LEFT SIDE OF TRUCK SHOWN. SOME ITEMS NOT SHOWN FOR CLARITY.

SHOCK HOOP KIT SHOWN  
FOR REFERENCE ONLY, NOT  
INCLUDED WITH KIT.  
ACCESSORY PART# 91600

SHOCK SHOWN  
FOR REFERENCE.



**PROPRIETARY AND CONFIDENTIAL**  
THE INFORMATION CONTAINED IN THIS DRAWING IS THE SOLE  
PROPERTY OF TOTAL CHAOS FABRICATION. ANY REPRODUCTION  
IN PART OR AS A WHOLE WITHOUT THE WRITTEN PERMISSION OF  
TOTAL CHAOS FABRICATION IS PROHIBITED.

LEFT SIDE OF TRUCK SHOWN. SOME ITEMS NOT SHOWN FOR CLARITY.

**INSTALLATION NOTES**

The factory manual is required for torque specifications on all factory hardware. This procedure will involve the removal and re-installation of many parts. Always use factory replacements for worn or damaged parts. Always use new cotter keys during re-installation.

Some items are not shown for clarity.

**Page 2**

Apply generous amounts of teflon based grease to outside of sleeves and I.D. of urethane bushings. (Teflon based grease is available from TOTAL CHAOS. Part # - Superlube )

**Page 4**

The upper uniball mount on the factory spindle must be drilled to 3/4". TOTAL CHAOS highly recommends welding Item #16 to the factory spindle.

**Page 5**

Shock hoop kit (PT# 91600) available separately.

**1998-2001 VEHICLES MUST SWITCH OUTER CV JOINTS TO 2002-2004 JOINTS (NISSAN PART# 39211-58G60).**

A wheel alignment is required after installation to return suspension geometry to factory specifications.

Inspect all components and re-torque all hardware within 500 miles.

**TOTAL CHAOS Fabrication Inc.**  
**159 North Maple St. Unit J**  
**Corona, CA 92880**  
**951.737.9682**

**WWW.CHAOSFAB.COM**

**PARTS LIST: 98-04 FRONTIER/XTERRA 4WD LONG TRAVEL**

ITEM #	PART #	QTY.	ITEM DESCRIPTION
1	99142L	1	CONTROL ARM, 98-04 NISSAN 4WD UPPER LEFT
	99142R	1	CONTROL ARM, 98-04 NISSAN 4WD UPPER RIGHT
2	99144L	1	CONTROL ARM, 98-04 NISSAN 4WD LOWER LEFT
	99144R	1	CONTROL ARM, 98-04 NISSAN 4WD LOWER RIGHT
3	60684	10	BUSHING, URETHANE SHORT HALF
4	60292	2	BUSHING, URETHANE TALL HALF
5	69120	4	INNER SLEEVE, UPPER CONTROL ARM
6	69130	2	INNER SLEEVE, NISSAN LOWER FRONT
7	60235	2	DROOP STOP, URETHANE ROUND
8	11010	2	NUT, 3/8" NYLOCK
9	60373	4	BUSHING, URETHANE NISSAN FRAME
10	69131	2	INNER SLEEVE, NISSAN LOWER REAR
11	10355	2	BOLT, 3/4" x 5.50L
12	12303	6	WASHER, 3/4" AN
13	10034TCF	4	SPACER, MISALIGNMENT
14	10034T	2	SPACER, BOTTOM UPPER ARM MISALIGNMENT
15	10034C	2	SPACER, TOP LOWER ARM MISALIGNMENT
16		2	SPACER, SPINDLE
17	11302	4	NUT, 3/4" C LOCK
18	10342	2	BOLT, 3/4" x 4.25L SOCKET HEAD
19	69134	2	3/4" TAPER ADAPTER
20	99044	2	TIE-ROD, NISSAN EXTENDED STEERING
21	10025	2	BOLT, 1/2" x 2.50" SHOCK
22	11001	2	NUT, 1/2" NYLOCK
23	91331	2	BRAKELINE, EXTENDED STAINLESS BRAIDED

**PROPRIETARY AND CONFIDENTIAL**  
THE INFORMATION CONTAINED IN THIS DRAWING IS THE SOLE PROPERTY OF TOTAL CHAOS FABRICATION. ANY REPRODUCTION IN PART OR AS A WHOLE WITHOUT THE WRITTEN PERMISSION OF TOTAL CHAOS FABRICATION IS PROHIBITED.