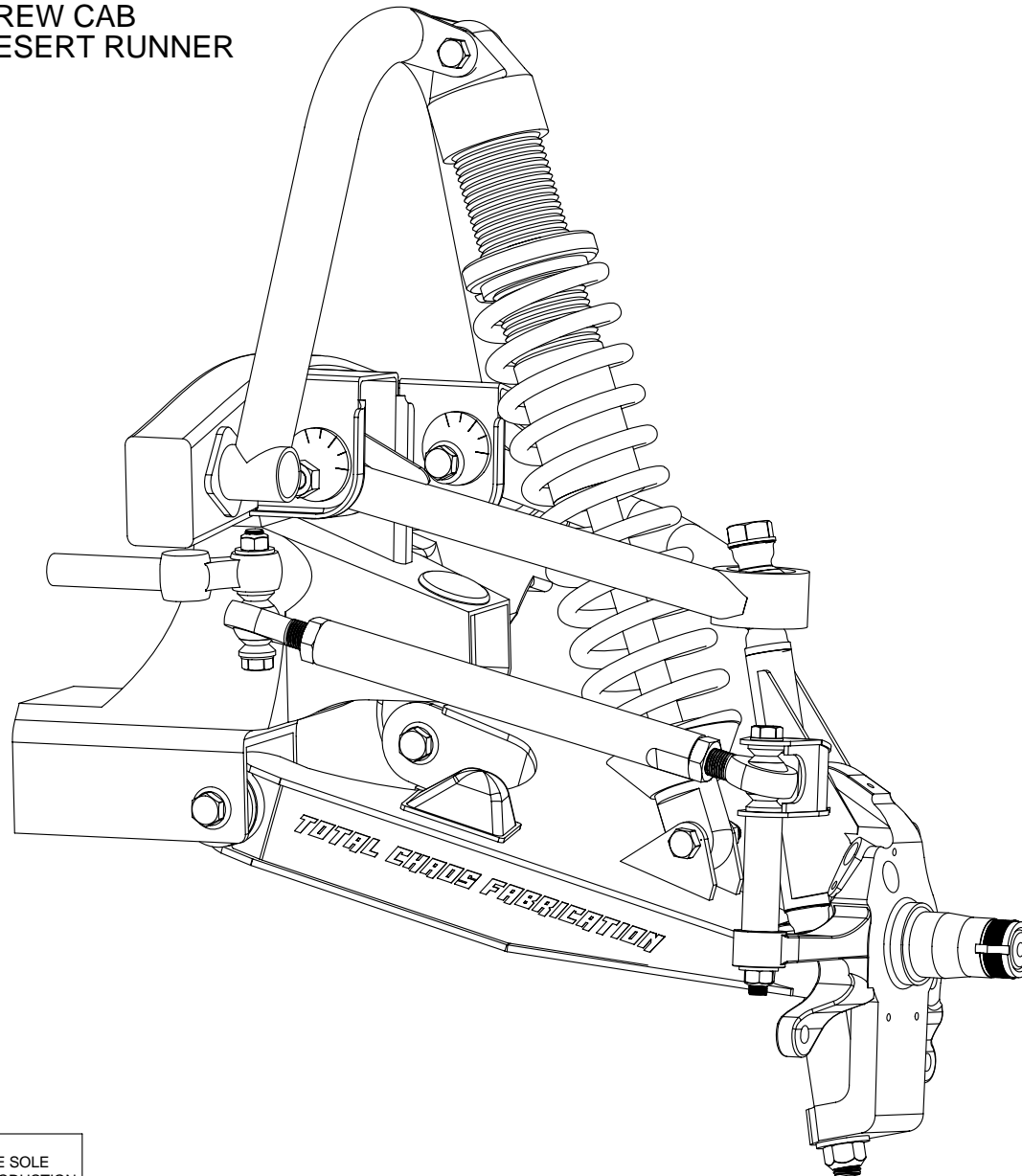


INSTALLATION DRAWINGS FOR THE:
1999-2004 FRONTIER 4x2 CREW CAB
2000-2004 FRONTIER 4x2 DESERT RUNNER
2000-2004 XTERRA 2WD

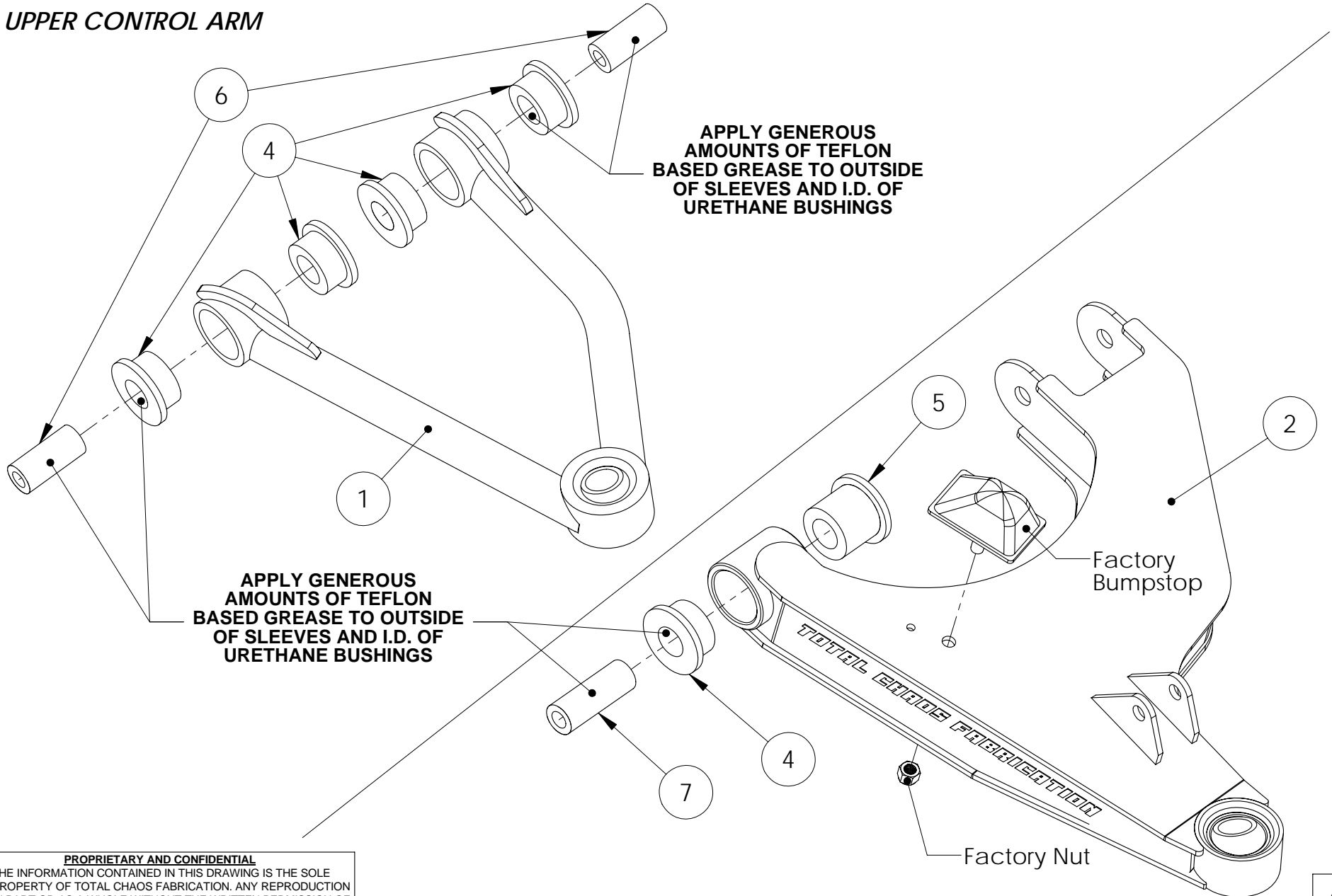


PROPRIETARY AND CONFIDENTIAL

THE INFORMATION CONTAINED IN THIS DRAWING IS THE SOLE PROPERTY OF TOTAL CHAOS FABRICATION. ANY REPRODUCTION IN PART OR AS A WHOLE WITHOUT THE WRITTEN PERMISSION OF TOTAL CHAOS FABRICATION IS PROHIBITED.

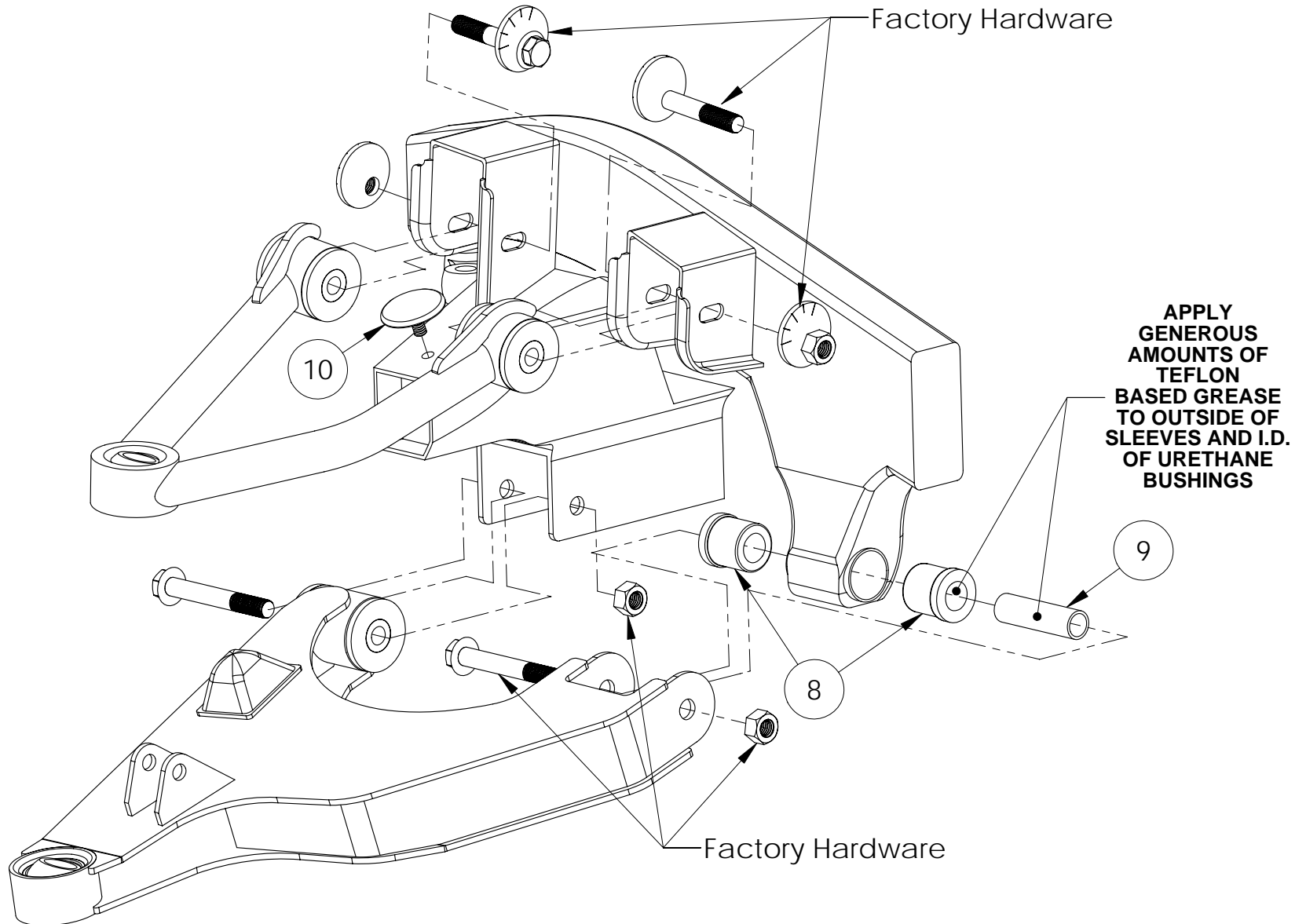
LEFT SIDE OF TRUCK SHOWN. SOME ITEMS NOT SHOWN FOR CLARITY.

UPPER CONTROL ARM



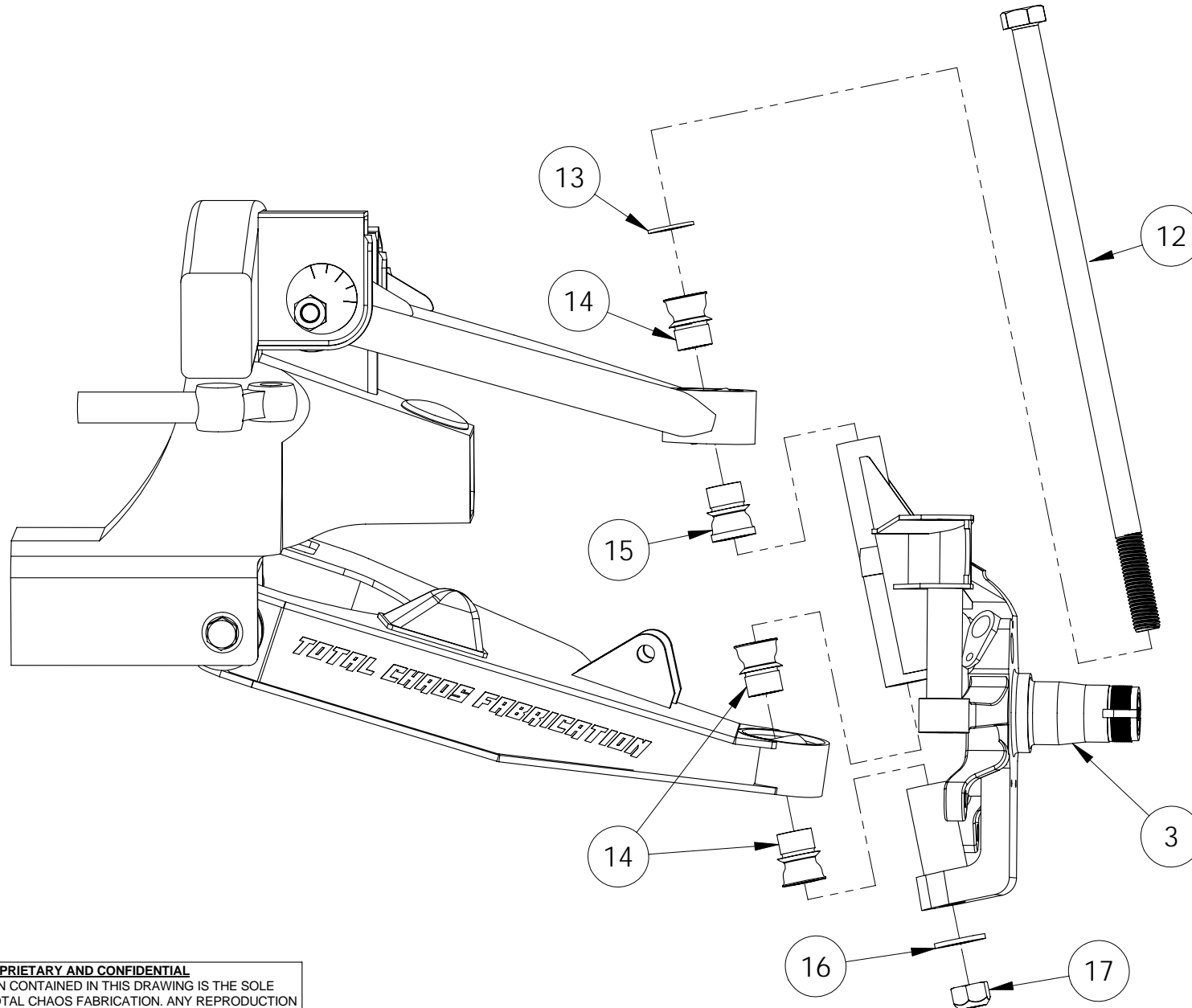
PROPRIETARY AND CONFIDENTIAL
THE INFORMATION CONTAINED IN THIS DRAWING IS THE SOLE PROPERTY OF TOTAL CHAOS FABRICATION. ANY REPRODUCTION IN PART OR AS A WHOLE WITHOUT THE WRITTEN PERMISSION OF TOTAL CHAOS FABRICATION IS PROHIBITED.

LEFT SIDE OF TRUCK SHOWN. SOME ITEMS NOT SHOWN FOR CLARITY.



PROPRIETARY AND CONFIDENTIAL
THE INFORMATION CONTAINED IN THIS DRAWING IS THE SOLE PROPERTY OF TOTAL CHAOS FABRICATION. ANY REPRODUCTION IN PART OR AS A WHOLE WITHOUT THE WRITTEN PERMISSION OF TOTAL CHAOS FABRICATION IS PROHIBITED.

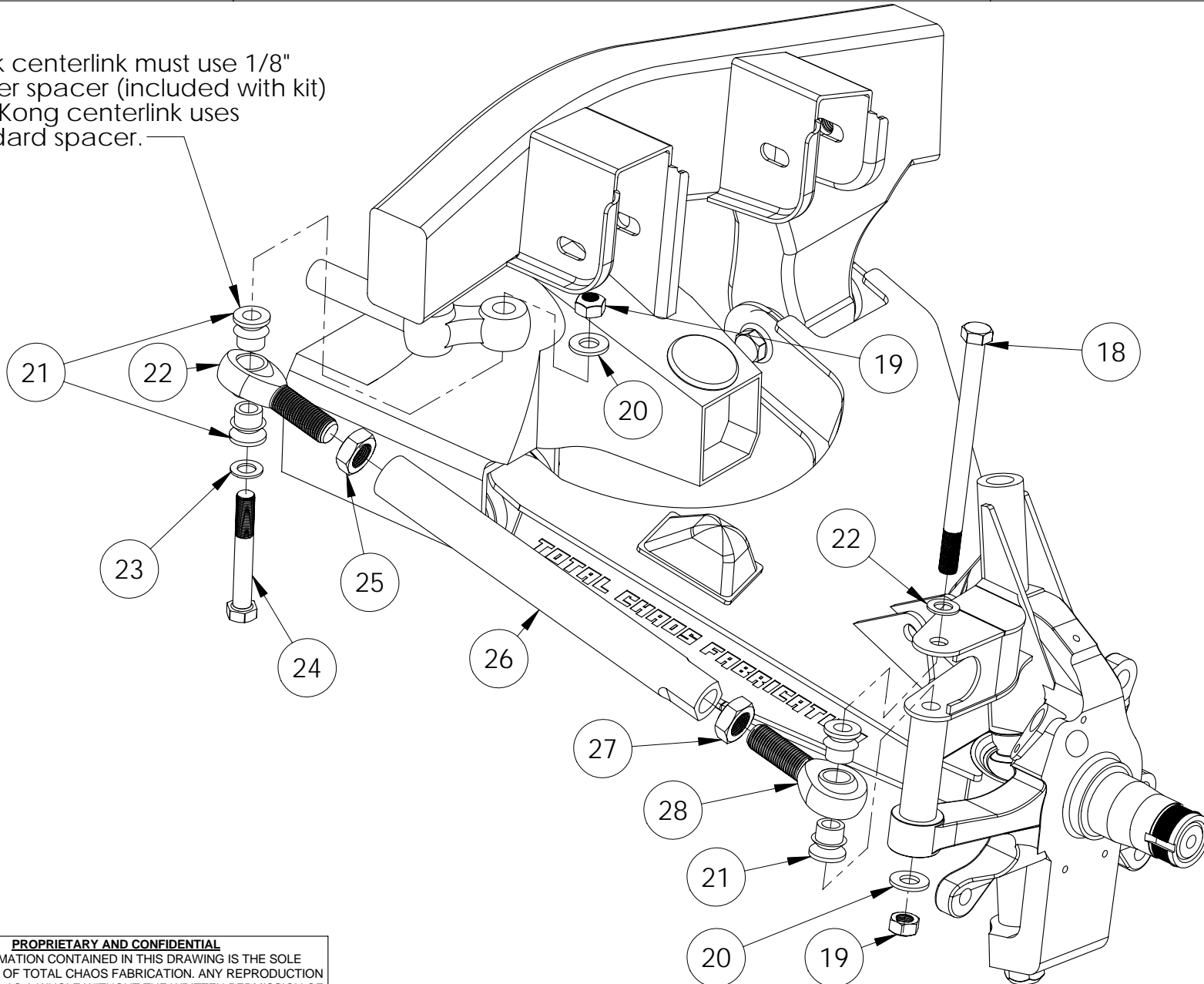
LEFT SIDE OF TRUCK SHOWN. SOME ITEMS NOT SHOWN FOR CLARITY.



PROPRIETARY AND CONFIDENTIAL
THE INFORMATION CONTAINED IN THIS DRAWING IS THE SOLE PROPERTY OF TOTAL CHAOS FABRICATION. ANY REPRODUCTION IN PART OR AS A WHOLE WITHOUT THE WRITTEN PERMISSION OF TOTAL CHAOS FABRICATION IS PROHIBITED.

LEFT SIDE OF TRUCK SHOWN. SOME ITEMS NOT SHOWN FOR CLARITY.

Stock centerlink must use 1/8" shorter spacer (included with kit)
King Kong centerlink uses standard spacer.



PROPRIETARY AND CONFIDENTIAL
THE INFORMATION CONTAINED IN THIS DRAWING IS THE SOLE PROPERTY OF TOTAL CHAOS FABRICATION. ANY REPRODUCTION IN PART OR AS A WHOLE WITHOUT THE WRITTEN PERMISSION OF TOTAL CHAOS FABRICATION IS PROHIBITED.

LEFT SIDE OF TRUCK SHOWN. SOME ITEMS NOT SHOWN FOR CLARITY.

INSTALLATION NOTES

The factory manual is required for torque specifications on all factory hardware. This procedure will involve the removal and re-installation of many parts. Always use factory replacements for worn or damaged parts. Always use new cotter keys during re-installation.

Some items are not shown for clarity.

Page 1
Shock hoop kit (PT# 91600) available separately.

Page 2
Apply generous amounts of teflon based grease to outside of sleeves and I.D. of urethane bushings. (Teflon based grease is available from TOTAL CHAOS. Part # - Superlube)

Page 4
Torque Item #12 to 100 ft./lbs.

A wheel alignment is required after installation to return suspension geometry to factory specifications.

Inspect all components and re-torque all hardware within 500 miles.

TOTAL CHAOS Fabrication Inc.
159 North Maple St. Unit J
Corona, CA 92880
951.737.9682

WWW.CHAOSFAB.COM

PROPRIETARY AND CONFIDENTIAL
THE INFORMATION CONTAINED IN THIS DRAWING IS THE SOLE PROPERTY OF TOTAL CHAOS FABRICATION. ANY REPRODUCTION IN PART OR AS A WHOLE WITHOUT THE WRITTEN PERMISSION OF TOTAL CHAOS FABRICATION IS PROHIBITED.

PARTS LIST: 99-04 FRONTIER/XTERRA 4X2 LONG TRAVEL

ITEM #	PART #	QTY.	ITEM DESCRIPTION
1	99142L	1	CONTROL ARM, 00-04 NISSAN 4X2 UPPER LEFT
	99142R	1	CONTROL ARM, 00-04 NISSAN 4X2 UPPER RIGHT
2	99143L	1	CONTROL ARM, 00-04 NISSAN 4X2 LOWER LEFT
	99143R	1	CONTROL ARM, 00-04 NISSAN 4X2 LOWER RIGHT
3	99145L	1	SPINDLE, 00-04 NISSAN 4X2 LEFT
	99145R	1	SPINDLE, 00-04 NISSAN 4X2 RIGHT
4	60684	10	BUSHING, URETHANE SHORT HALF
5	60292	2	BUSHING, URETHANE TALL HALF
6	69120	4	INNER SLEEVE, UPPER CONTROL ARM
7	69130	2	INNER SLEEVE, NISSAN LOWER FRONT
8	60373	4	BUSHING, URETHANE NISSAN FRAME
9	69131	2	INNER SLEEVE, NISSAN LOWER REAR
10	67002	2	DROOP STOP, URETHANE ROUND
11	11010	2	NUT, 3/8" NYLOCK
12	10318	2	BOLT, 3/4" x 17.50" L
13	12303	2	WASHER, 3/4" AN
14	10034TCF	6	SPACER, MISALIGNMENT
15	10034T	2	SPACER, BOTTOM UPPER ARM MISALIGNMENT
16	12304	2	WASHER, 3/4" SAE
17	11302	2	NUT, 3/4" C LOCK
18	10070	2	BOLT, 1/2" x 7.00L TIE-ROD END
19	11002	2	NUT, 1/2" C LOCK
20	12004	4	WASHER, 1/2" SAE
21	13412	8	SPACER, 3/4" x 1/2" MISALIGNMENT
22	JMX12T	2	3/4" x 3/4" RH TIE-ROD END
23	12003	4	WASHER, 1/2" AN
24	10037	2	BOLT, 1/2" x 3.75" L TIE-ROD END
25	11373	2	JAM NUT, 3/4" RH
26	99011	2	EXTENDED NISSAN TIE-ROD
27	11375	2	JAM NUT, 3/4" LH
28	JMXL12T	2	3/4" x 3/4" LH TIE-ROD END
29	10025	2	BOLT, 1/2" x 2.50" L SHOCK
30	11001	2	NUT, 1/2" NYLOCK
31	91331	2	BRAKELINE, EXTENDED BRAIDED

LEFT SIDE OF TRUCK SHOWN. SOME ITEMS NOT SHOWN FOR CLARITY.