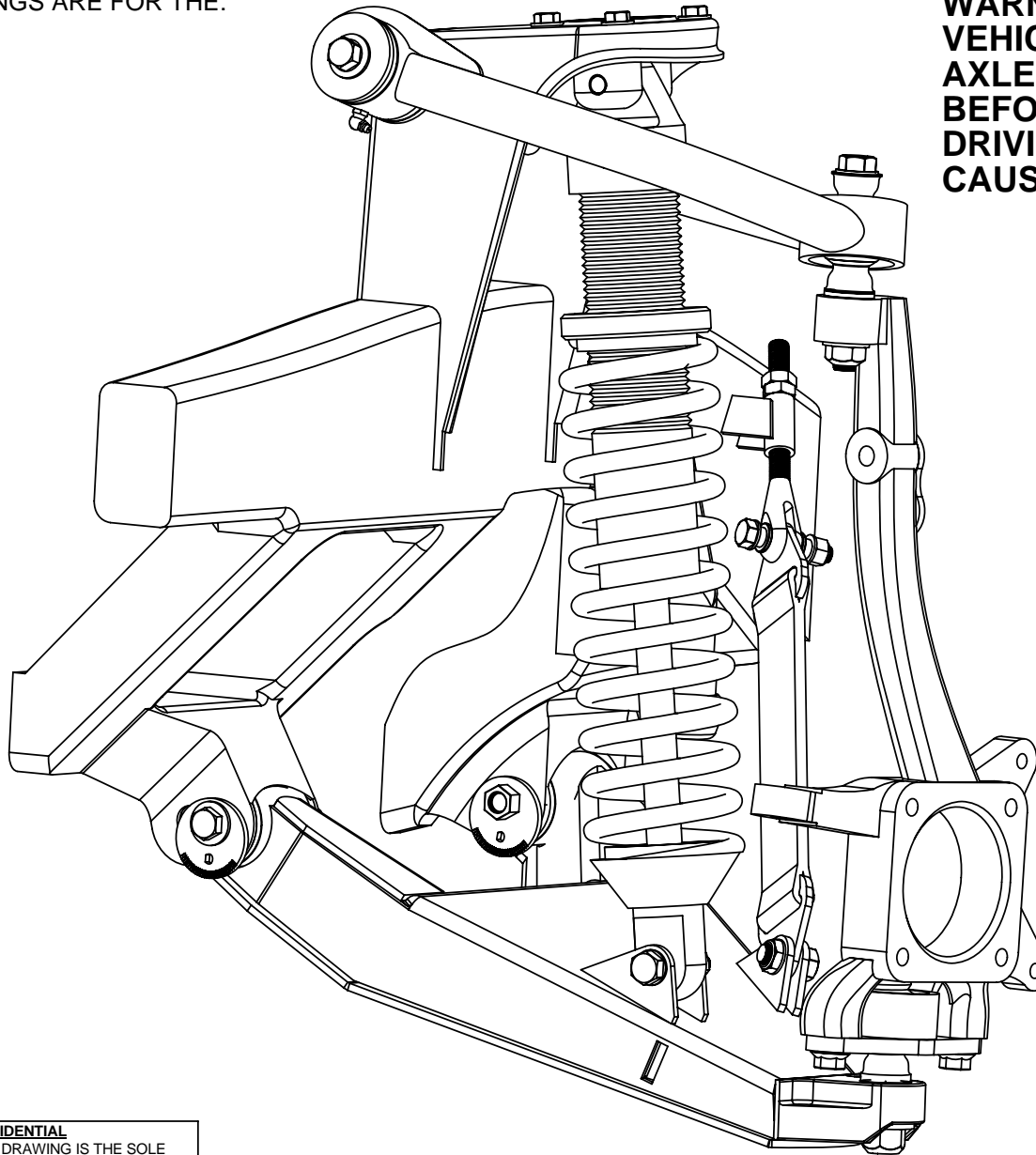


INSTALLATION DRAWINGS ARE FOR THE:
2007+ FJ CRUISER

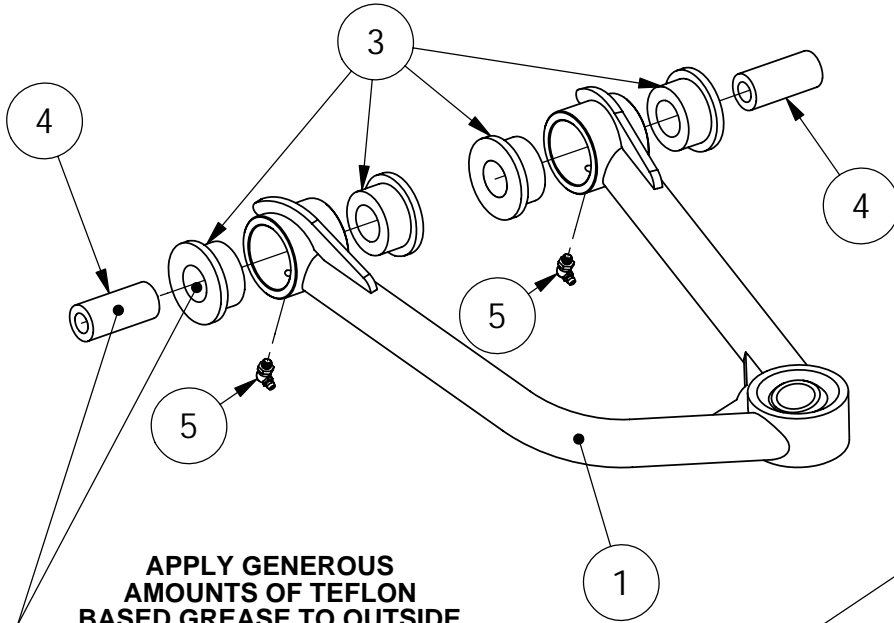
**WARNING: 4WD EQUIPPED
VEHICLES MUST HAVE EXTENDED
AXLE SHAFTS INSTALLED
BEFORE THE VEHICLE IS DRIVEN.
DRIVING WITHOUT AXLES WILL
CAUSE CATASTROPHIC FAILURE!**



PROPRIETARY AND CONFIDENTIAL

THE INFORMATION CONTAINED IN THIS DRAWING IS THE SOLE PROPERTY OF TOTAL CHAOS FABRICATION. ANY REPRODUCTION IN PART OR AS A WHOLE WITHOUT THE WRITTEN PERMISSION OF TOTAL CHAOS FABRICATION IS PROHIBITED.

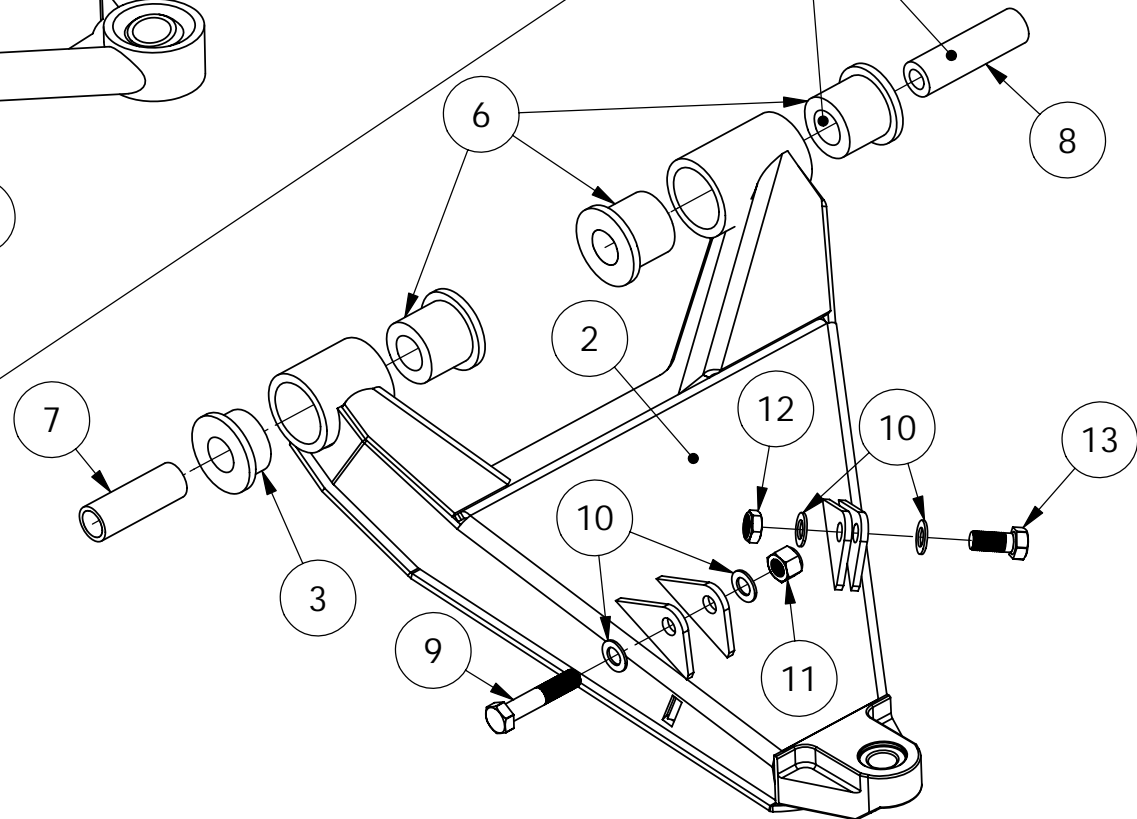
*LEFT SIDE OF TRUCK SHOWN. SOME ITEMS NOT SHOWN FOR CLARITY.



UPPER A-ARM

APPLY GENEROUS AMOUNTS OF TEFLON BASED GREASE TO OUTSIDE OF SLEEVES AND I.D. OF URETHANE BUSHINGS

APPLY GENEROUS AMOUNTS OF TEFLON BASED GREASE TO OUTSIDE OF SLEEVES AND I.D. OF URETHANE BUSHINGS



LOWER A-ARM

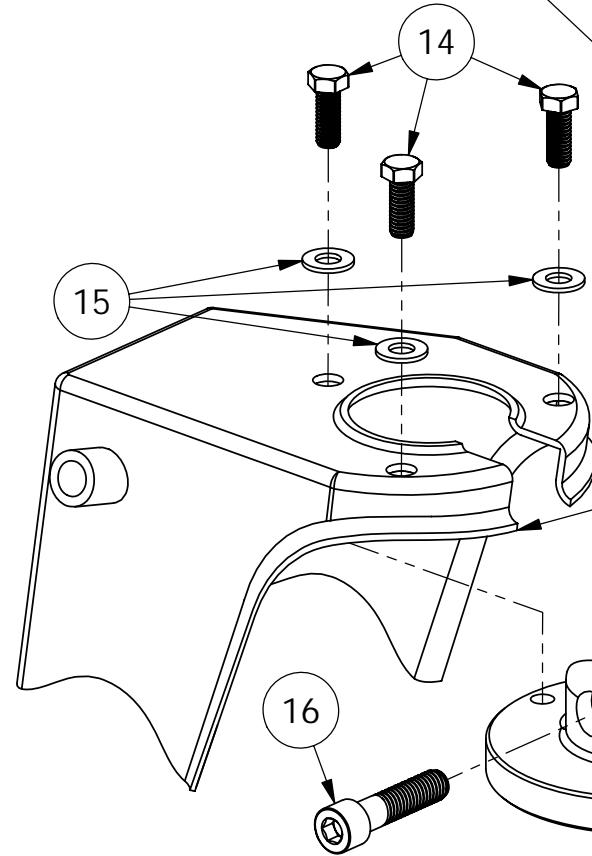
PROPRIETARY AND CONFIDENTIAL
 THE INFORMATION CONTAINED IN THIS DRAWING IS THE SOLE PROPERTY OF TOTAL CHAOS FABRICATION. ANY REPRODUCTION IN PART OR AS A WHOLE WITHOUT THE WRITTEN PERMISSION OF TOTAL CHAOS FABRICATION IS PROHIBITED.

*LEFT SIDE OF TRUCK SHOWN. SOME ITEMS NOT SHOWN FOR CLARITY.

SHOCK MOUNT

FOR FOX SHOCKS ONLY
WHEN USING KING, SAW & ICON SHOCKS
USE INCLUDED SHOCK MOUNTS

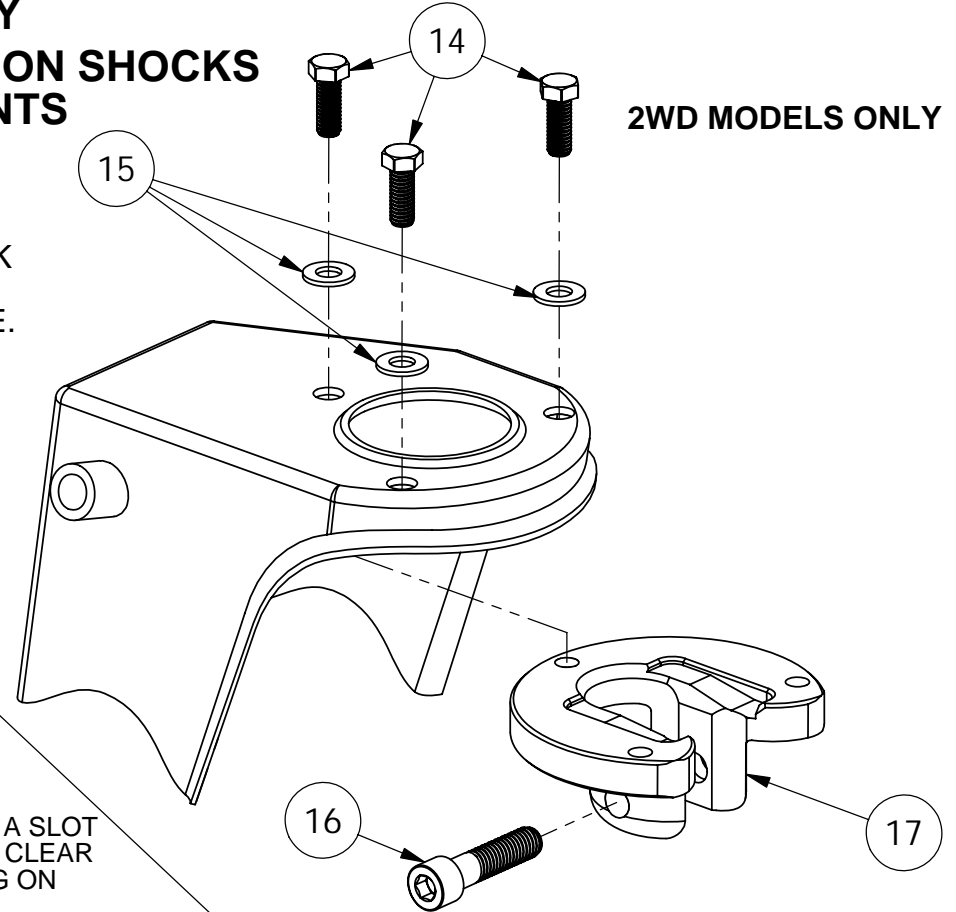
4WD MODELS ONLY



CONNECT THE SHOCK
TO ITEM #15 BEFORE
MOUNTING TO FRAME.
(ALL MODELS)

YOU WILL NEED TO CUT A SLOT
IN THE COIL BUCKET TO CLEAR
THE RESERVOIR FITTING ON
THE SHOCK (4WD ONLY)

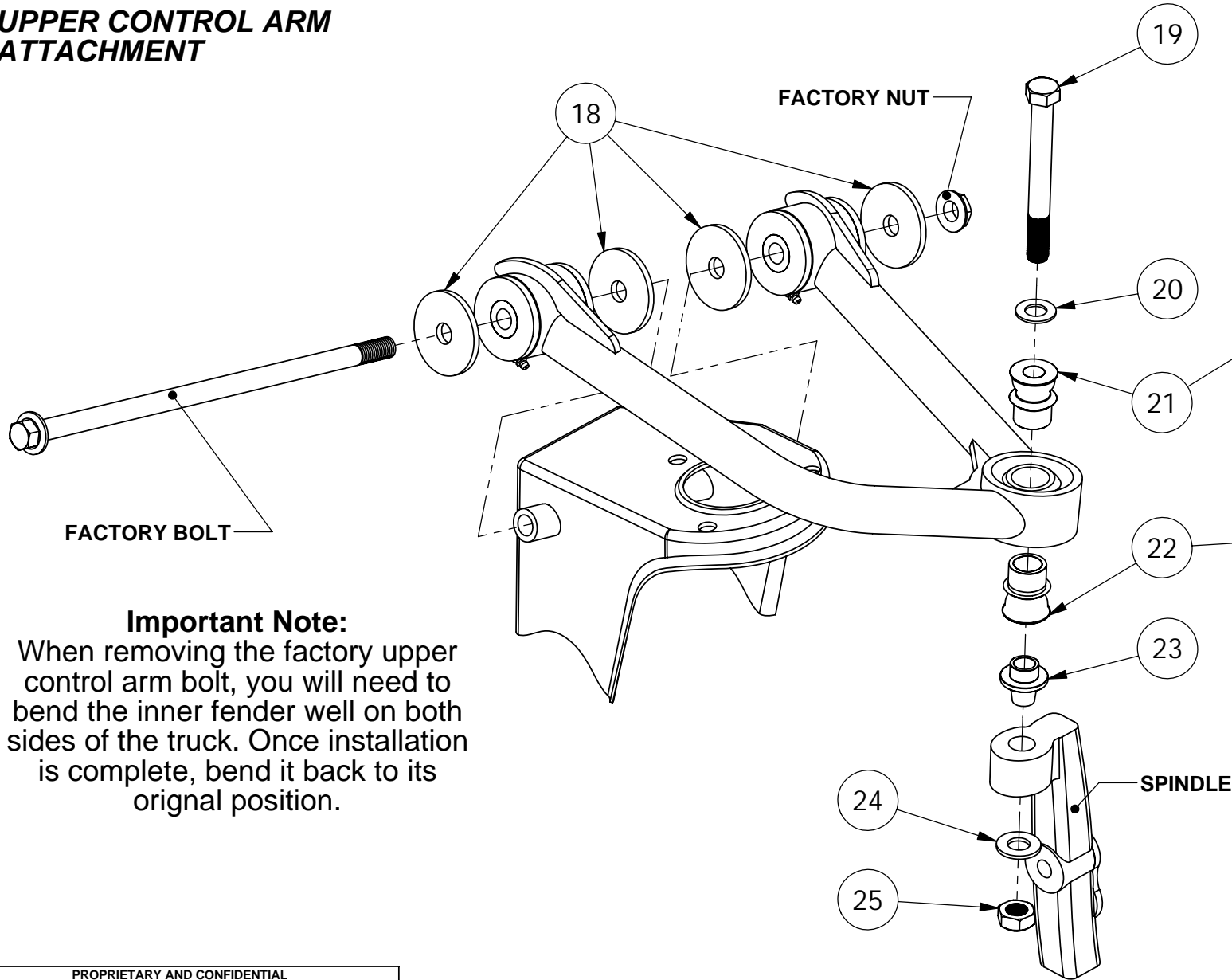
2WD MODELS ONLY



PROPRIETARY AND CONFIDENTIAL
THE INFORMATION CONTAINED IN THIS DRAWING IS THE SOLE
PROPERTY OF TOTAL CHAOS FABRICATION. ANY REPRODUCTION
IN PART OR AS A WHOLE WITHOUT THE WRITTEN PERMISSION OF
TOTAL CHAOS FABRICATION IS PROHIBITED.

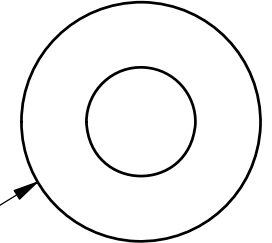
*LEFT SIDE OF TRUCK SHOWN. SOME ITEMS NOT SHOWN FOR CLARITY.

UPPER CONTROL ARM ATTACHMENT

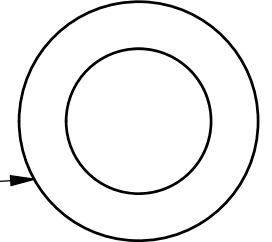


IMPORTANT NOTE:
 During assembly, upper & lower spacers are specific. Failure to follow these instructions will result in damage of all components.

Upper spacer has 9/16" hole



Lower spacer has 3/4" hole



FACTORY BOLT

Important Note:

When removing the factory upper control arm bolt, you will need to bend the inner fender well on both sides of the truck. Once installation is complete, bend it back to its original position.

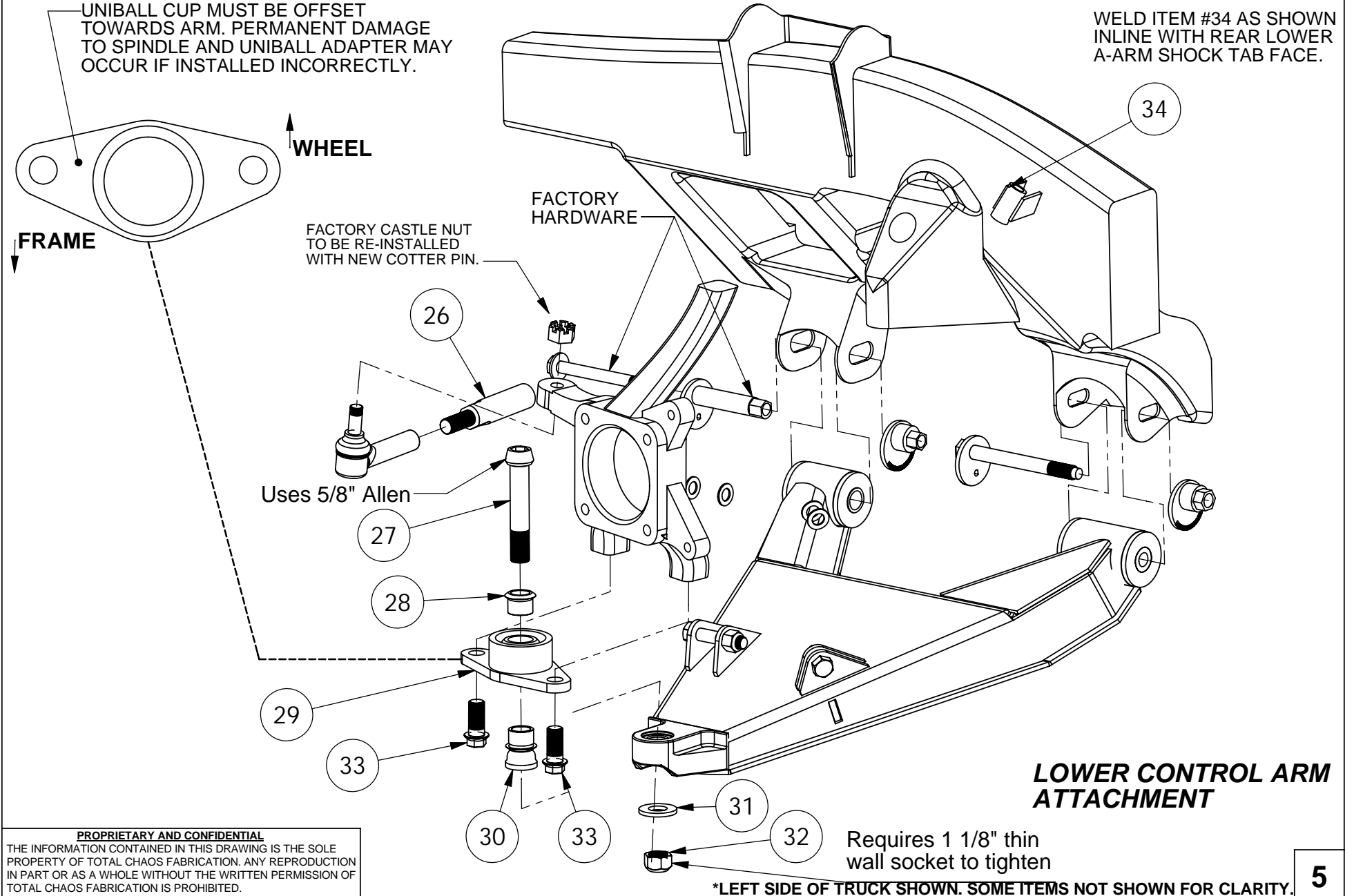
PROPRIETARY AND CONFIDENTIAL

THE INFORMATION CONTAINED IN THIS DRAWING IS THE SOLE PROPERTY OF TOTAL CHAOS FABRICATION. ANY REPRODUCTION IN PART OR AS A WHOLE WITHOUT THE WRITTEN PERMISSION OF TOTAL CHAOS FABRICATION IS PROHIBITED.

*LEFT SIDE OF TRUCK SHOWN. SOME ITEMS NOT SHOWN FOR CLARITY.

UNIBALL CUP MUST BE OFFSET TOWARDS ARM. PERMANENT DAMAGE TO SPINDLE AND UNIBALL ADAPTER MAY OCCUR IF INSTALLED INCORRECTLY.

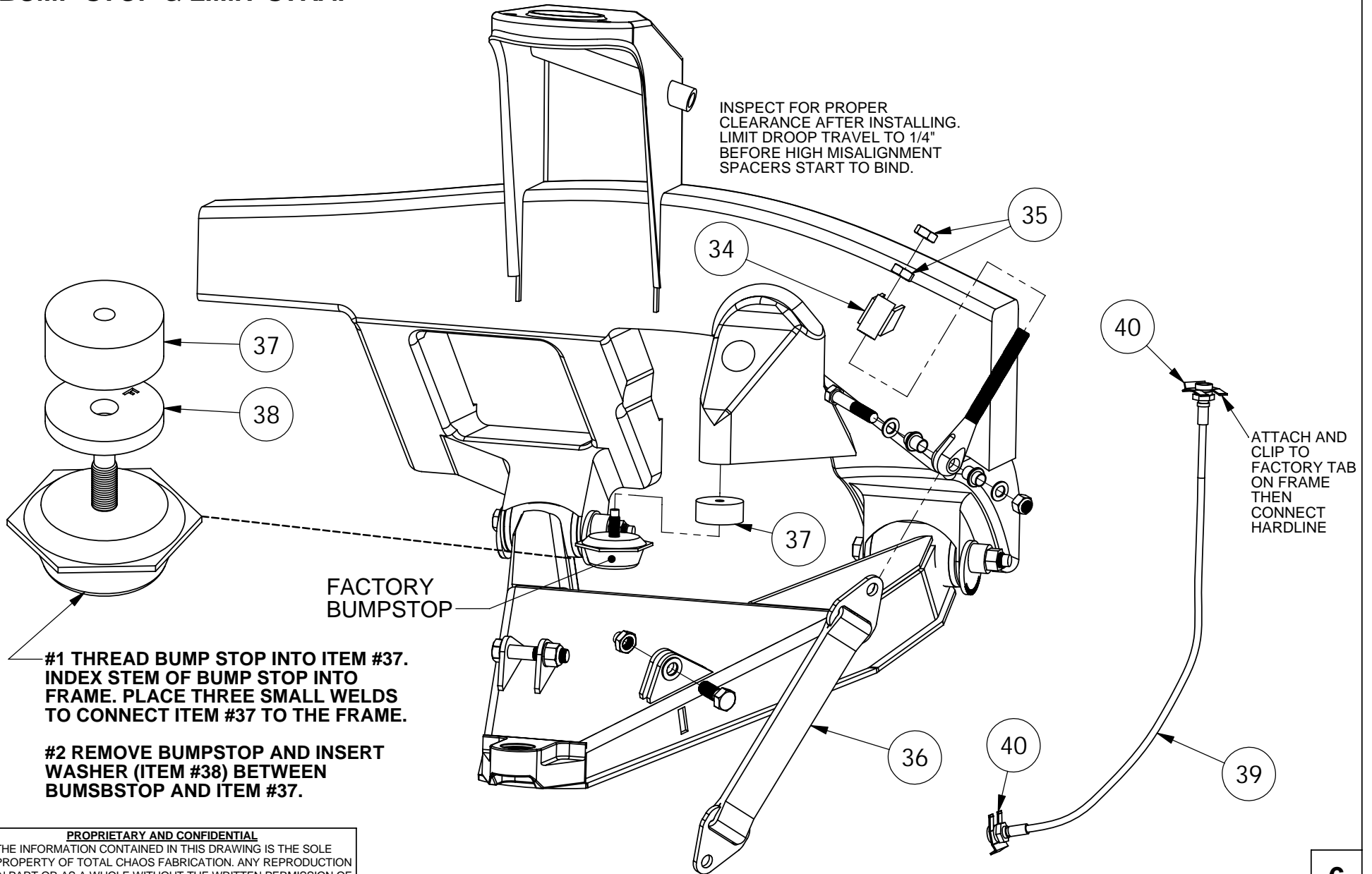
WELD ITEM #34 AS SHOWN INLINE WITH REAR LOWER A-ARM SHOCK TAB FACE.



PROPRIETARY AND CONFIDENTIAL
 THE INFORMATION CONTAINED IN THIS DRAWING IS THE SOLE PROPERTY OF TOTAL CHAOS FABRICATION. ANY REPRODUCTION IN PART OR AS A WHOLE WITHOUT THE WRITTEN PERMISSION OF TOTAL CHAOS FABRICATION IS PROHIBITED.

BUMP STOP & LIMIT STRAP

INSPECT FOR PROPER
 CLEARANCE AFTER INSTALLING.
 LIMIT DROOP TRAVEL TO 1/4"
 BEFORE HIGH MISALIGNMENT
 SPACERS START TO BIND.



FACTORY
 BUMPSTOP

#1 THREAD BUMP STOP INTO ITEM #37.
 INDEX STEM OF BUMP STOP INTO
 FRAME. PLACE THREE SMALL WELDS
 TO CONNECT ITEM #37 TO THE FRAME.

#2 REMOVE BUMPSTOP AND INSERT
 WASHER (ITEM #38) BETWEEN
 BUMSBSTOP AND ITEM #37.

ATTACH AND
 CLIP TO
 FACTORY TAB
 ON FRAME
 THEN
 CONNECT
 HARDLINE

PROPRIETARY AND CONFIDENTIAL
 THE INFORMATION CONTAINED IN THIS DRAWING IS THE SOLE
 PROPERTY OF TOTAL CHAOS FABRICATION. ANY REPRODUCTION
 IN PART OR AS A WHOLE WITHOUT THE WRITTEN PERMISSION OF
 TOTAL CHAOS FABRICATION IS PROHIBITED.

*LEFT SIDE OF TRUCK SHOWN. SOME ITEMS NOT SHOWN FOR CLARITY.

INSTALLATION NOTES

The factory manual is required for torque specifications on all hardware. This procedure will involve the removal and re-installation of many parts. Always use factory replacements for worn or damaged parts. Always use new cotter keys during re-installation.

Some items are not shown for clarity.

In order to retain 4 wheel drive, new axles must be purchased from Total Chaos. Please call for more information.

Page 2

Apply generous amounts of teflon based grease to outside of sleeves and I.D. of urethane bushings.
(Teflon based grease is available from Total Chaos. Part # - Superlube)

Page 4

Torque item #19 to 100ft lbs.

Page 5

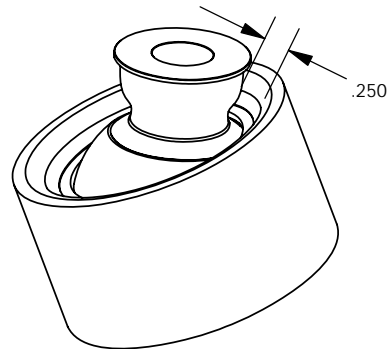
Torque item #27 to 100ft lbs.

Item #34 - Weld as shown, inline with rear lower a-arm shock tab face. Grind frame to bare metal before proceeding to weld. Placement of brake hardline may need to be adjusted on frame before welding.

Page 6

After installation is complete (shocks installed), adjust limit strap so that there is a 1/4" gap between the high misalignment spacer and the uniball cup on the upper control arm (see model below). Limit straps will stretch over time and will need to be adjusted periodically to prevent damage to shocks and uniball components.

Weld the included reservoir mounting tabs to frame in a location where the shock reservoir hose is not kinked or bent.



TOTAL CHAOS Fabrication Inc.
159 North Maple St. Unit J
Corona, CA 92880
951.737.9682

WWW.CHAOSFAB.COM

PROPRIETARY AND CONFIDENTIAL
THE INFORMATION CONTAINED IN THIS DRAWING IS THE SOLE PROPERTY OF TOTAL CHAOS FABRICATION. ANY REPRODUCTION IN PART OR AS A WHOLE WITHOUT THE WRITTEN PERMISSION OF TOTAL CHAOS FABRICATION IS PROHIBITED.

PARTS LIST: 07+ FJ +2" LONG TRAVEL

ITEM #	PART #	QTY.	ITEM DESCRIPTION
1	86201L	1	CONTROL ARM, FJ +2" UPPER LEFT
	86201R	1	CONTROL ARM, FJ +2" UPPER RIGHT
2	86202L	1	CONTROL ARM, FJ +2" LOWER LEFT
	86202R	1	CONTROL ARM, FJ +2" LOWER RIGHT
3	60684	10	BUSHING, URETHANE SHORT HALF
4	69120	4	SLEEVE, UPPER ARM INNER
5	10005	4	FITTING, GREASE (ZERK)
6	60292	6	BUSHING, URETHANE LONG HALF
7	69702	2	SLEEVE, LOWER ARM FRONT INNER
8	68603	2	SLEEVE, LOWER ARM REAR INNER
9	10025	2	BOLT, 1/2" x 2.50L FRONT SHOCK
10	12003	8	WASHER, 1/2" AN
11	11001	2	NUT, 1/2" NYLOCK
12	11005	2	NUT, 1/2" JAM NYLOCK
13	10011	2	BOLT, 1/2" x 1.00L LIMIT STRAP
14	10710	6	BOLT, 3/8" X 1.00L SHOCK MOUNT
15	12011	6	WASHER, 3/8" SAE SHOCK MOUNT
16	10020	2	BOLT, 1/2" SOCKET HEAD SHOCK
17	58621K	2	SHOCK CIRCLE, BILLET
18	69620	8	WASHER, UPPER ARM
19	10251	2	BOLT, 9/16" x 5.00L
20	12203	2	WASHER, 9/16" AN
21	100916	2	SPACER, TOP UPPER ARM MISALIGNMENT
22	10034TCF	2	SPACER, BOTTOM UPPER ARM MISALIGNMENT
23	30004	2	SLEEVE, 9/16" TAPERED ADAPTER
24	12204	2	WASHER, 9/16" SAE
25	11202	2	NUT, 9/16" C-LOCK
26	99015-2	2	EXTENSION, 15MM TIEROD
27	10342	2	BOLT, 3/4" x 4.25L SOCKET HEAD
28	10034C	2	SPACER, TOP LOWER ARM MISALIGNMENT
29	68614	2	ADAPTER, LOWER UNIBALL 2-BOLT FLANGE
30	10034T	2	SPACER, BOTTOM LOWER ARM MISALIGNMENT
31	12304	2	WASHER, 3/4" SAE
32	11302	2	NUT, 3/4" GRADE C LOCK
33	10616	4	BOLT, 16MM X 45MM FLANGE HEAD
34	69619	2	BRACKET, LIMIT STRAP CLEVIS, WELD ON
35	69618	2	CLEVIS, ADJUSTABLE LIMIT STRAP
36	69611	2	STRAP, 11" LIMIT
37	68610	2	THREADED SPACER, BUMPSTOP
38	69610	2	WASHER, 1/4" BUMPSTOP
39	86330	2	LINE, EXTENDED BRAKE
40	33301	4	CLIP, BRAKELINE RETAINING
	59204	4	RESERVOIR MOUNTING TAB

*LEFT SIDE OF TRUCK SHOWN. SOME ITEMS NOT SHOWN FOR CLARITY.