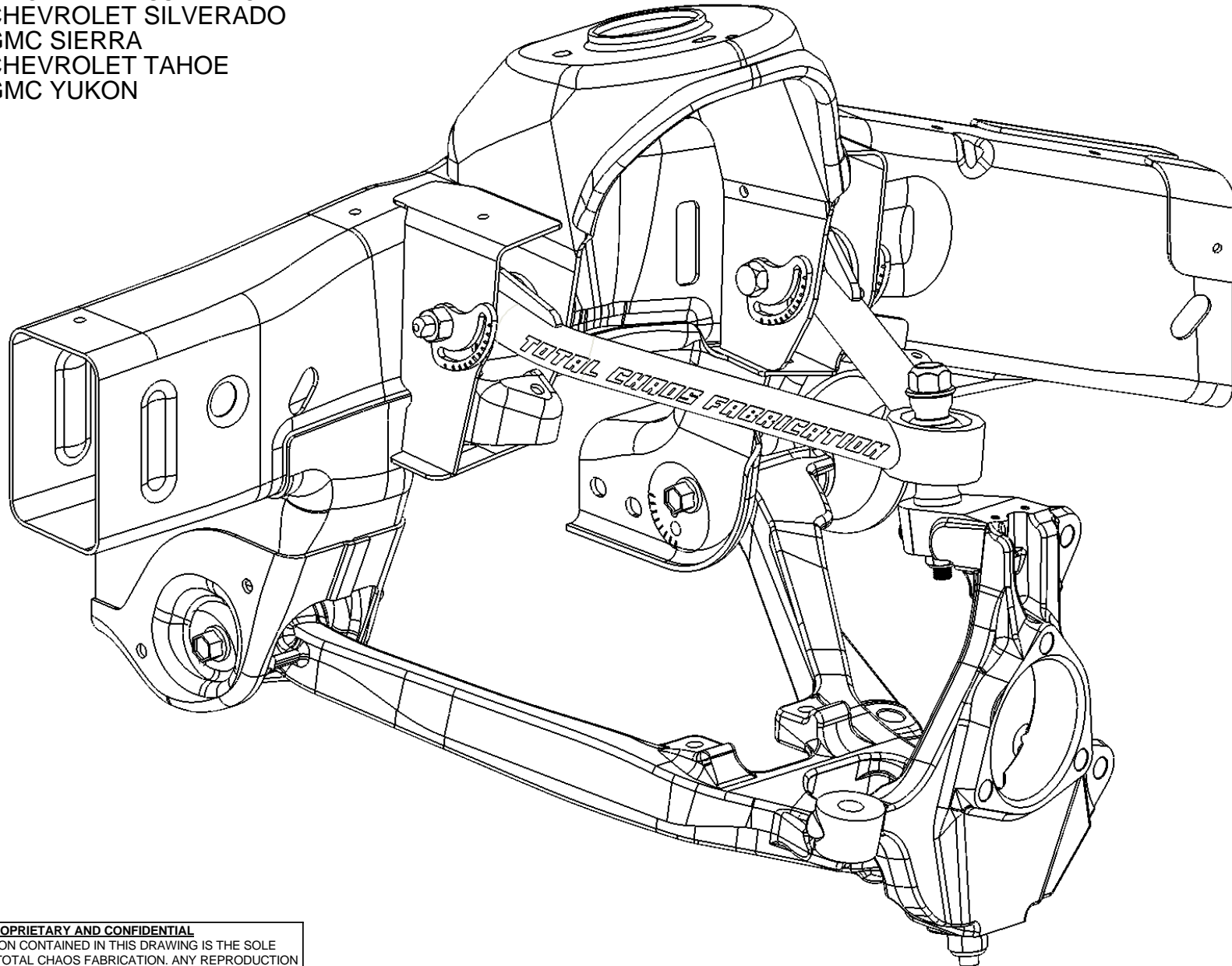


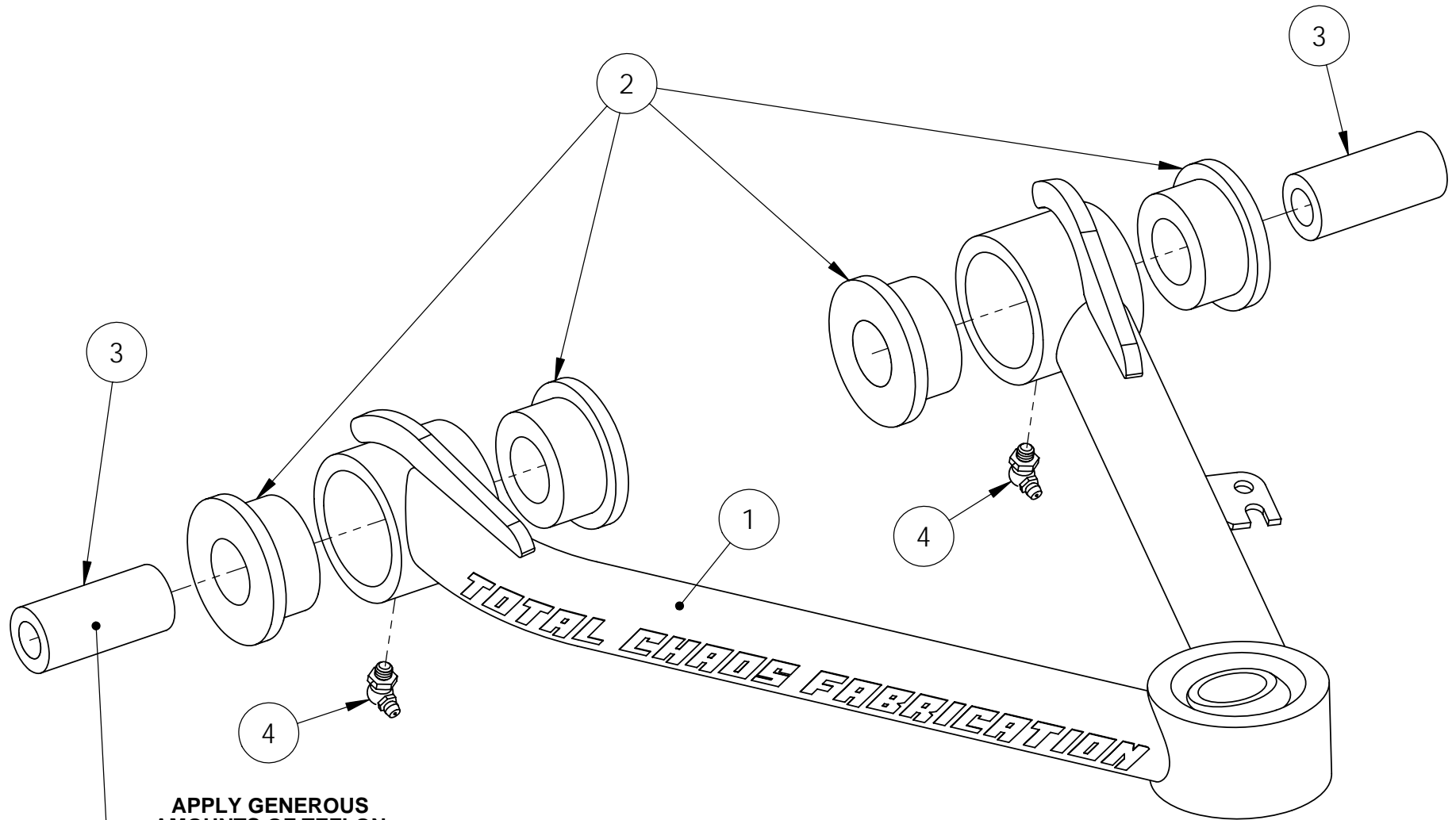
INSTALLATION DRAWINGS ARE FOR THE:
2007+ CHEVROLET SILVERADO
2007+ GMC SIERRA
2007+ CHEVROLET TAHOE
2007+ GMC YUKON



PROPRIETARY AND CONFIDENTIAL

THE INFORMATION CONTAINED IN THIS DRAWING IS THE SOLE PROPERTY OF TOTAL CHAOS FABRICATION. ANY REPRODUCTION IN PART OR AS A WHOLE WITHOUT THE WRITTEN PERMISSION OF TOTAL CHAOS FABRICATION IS PROHIBITED.

LEFT SIDE OF TRUCK SHOWN. SOME ITEMS NOT SHOWN FOR CLARITY.



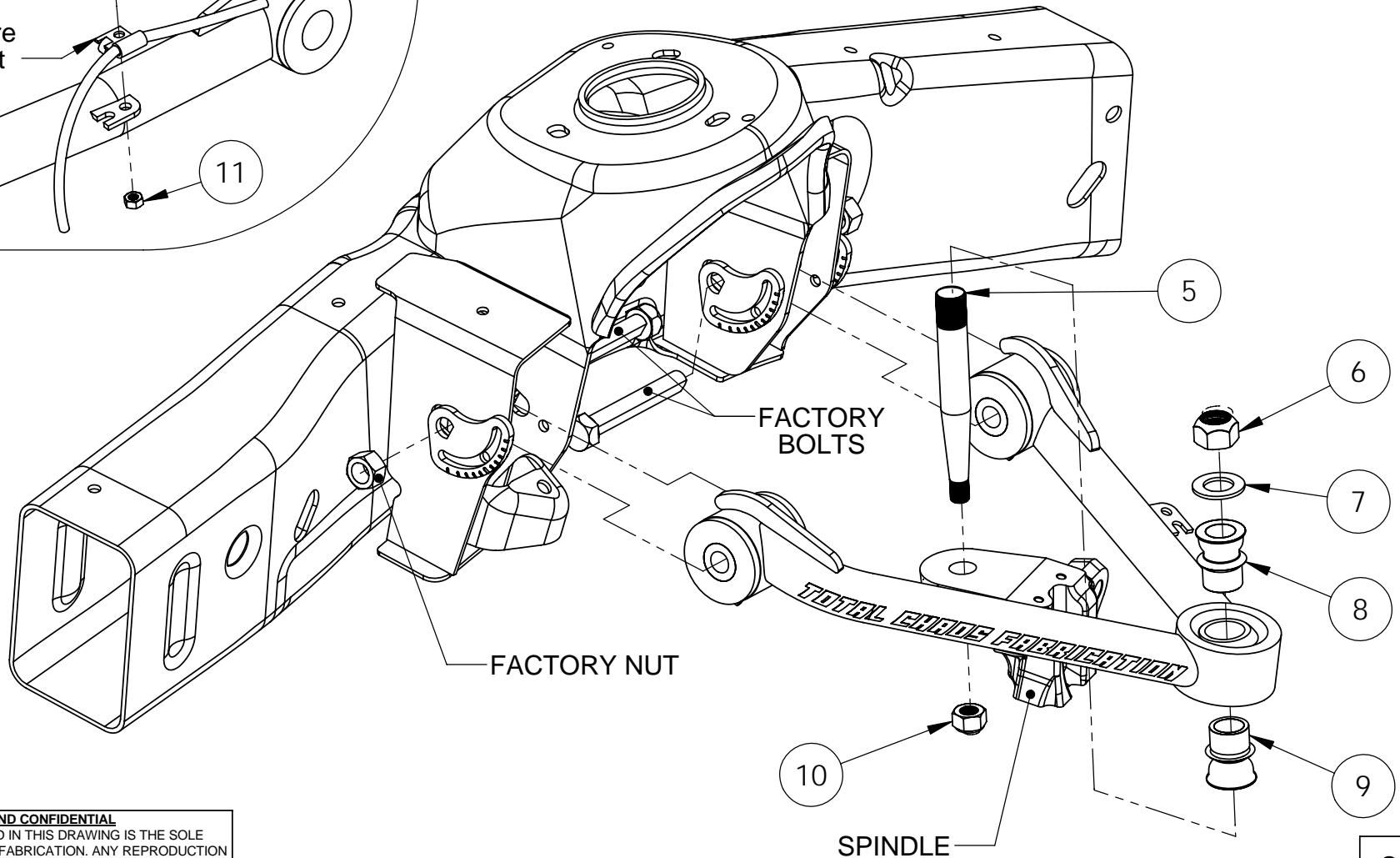
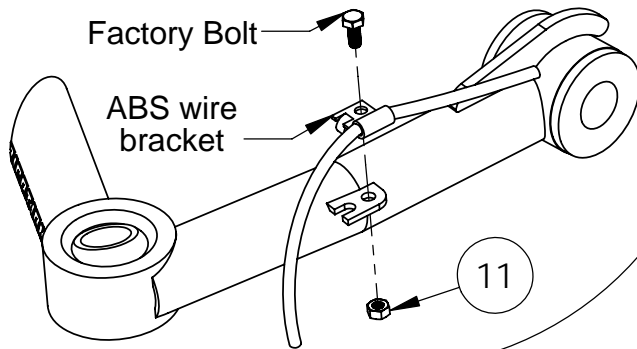
**APPLY GENEROUS
AMOUNTS OF TEFLON
BASED GREASE TO OUTSIDE
OF SLEEVES AND I.D. OF
URETHANE BUSHINGS**

PROPRIETARY AND CONFIDENTIAL
THE INFORMATION CONTAINED IN THIS DRAWING IS THE SOLE
PROPERTY OF TOTAL CHAOS FABRICATION. ANY REPRODUCTION
IN PART OR AS A WHOLE WITHOUT THE WRITTEN PERMISSION OF
TOTAL CHAOS FABRICATION IS PROHIBITED.

LEFT SIDE OF TRUCK SHOWN. SOME ITEMS NOT SHOWN FOR CLARITY.

ABS WIRE MOUNTING INSTRUCTIONS

The factory ABS wire must be unbolted when assembling or disassembling the front suspension. Failure to do so can break the wire causing the ABS system not to function.



PROPRIETARY AND CONFIDENTIAL
THE INFORMATION CONTAINED IN THIS DRAWING IS THE SOLE PROPERTY OF TOTAL CHAOS FABRICATION. ANY REPRODUCTION IN PART OR AS A WHOLE WITHOUT THE WRITTEN PERMISSION OF TOTAL CHAOS FABRICATION IS PROHIBITED.

LEFT SIDE OF TRUCK SHOWN. SOME ITEMS NOT SHOWN FOR CLARITY.

INSTALLATION NOTES

The factory manual is required for torque specifications on all factory hardware. This procedure will involve the removal and re-installation of many parts. Always use factory replacements for worn or damaged parts. Always use new cotter keys during re-installation.

Some items are not shown for clarity.

Page 2
Apply generous amounts of teflon based grease to outside of sleeves and I.D. of urethane bushings. (Teflon based grease is available from TOTAL CHAOS. Part # - Superlube)

Page 3
Torque Item# 6 to 90-100 ft/lbs. Torque Item# 10 to 55-65 ft/lbs. All noted procedures must be performed on this page to ensure complete installation.

A wheel alignment is required after installation to return suspension geometry to factory specifications.

Inspect all components and re-torque all hardware within 500 miles.

TOTAL CHAOS Fabrication Inc.
159 North Maple St. Unit J
Corona, CA 92880
951.737.9682

PARTS LIST: 07+ CHEVY/GMC UPPER CONTROL ARM			
ITEM #	PART #	QTY.	ITEM DESCRIPTION
1	77501L	1	CONTROL ARM, 07+ CHEVY/GMC UPPER LEFT
	77501R	1	CONTROL ARM, 07+ CHEVY/GMC UPPER RIGHT
2	60684	8	BUSHING, URETHANE HALF
3	69120	4	INNER SLEEVE
4	10005	4	FITTING, GREASE (ZERK)
5	30007	2	UNIBALL ADAPTER PIN
6	11302	2	NUT, 3/4" C-LOCK
7	12303	2	WASHER, 3/4" AN
8	10034TCF	2	SPACER, 3/4" MISALIGNMENT
9	10034T	2	SPACER, 3/4" MISALIGNMENT TALL
10	11121	2	NUT, 12MM x 1.5
11	11061	2	NUT, 6MM ABS BRACKET

PROPRIETARY AND CONFIDENTIAL
THE INFORMATION CONTAINED IN THIS DRAWING IS THE SOLE PROPERTY OF TOTAL CHAOS FABRICATION. ANY REPRODUCTION IN PART OR AS A WHOLE WITHOUT THE WRITTEN PERMISSION OF TOTAL CHAOS FABRICATION IS PROHIBITED.